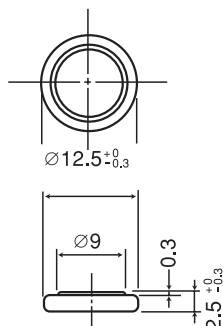


High Operating Temperature Poly-carbonmonofluoride Lithium Coin Batteries (BR "A" Series): Individual Specifications

BR1225A

■ Dimensions(mm)

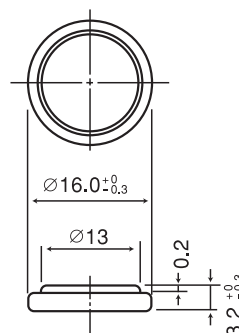


Weight: 0.8g

Note: This bare cell diagram is for size reference only. Please refer to the tab configurations at the end of this section for available tabs.

BR1632A

■ Dimensions(mm)



Weight: 1.5g

Note: This bare cell diagram is for size reference only. Please refer to the tab configurations at the end of this section for available tabs.

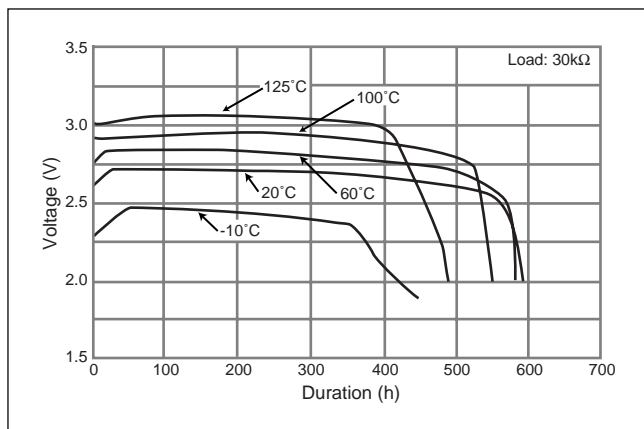
■ Specification

| | |
|-------------------------------|------------|
| Nominal voltage (V) | 3 |
| Nominal capacity (mAh) | 48 |
| Continuous standard load (mA) | 0.03 |
| Operating temperature (C) | -40 ~ +125 |

■ Specification

| | |
|-------------------------------|------------|
| Nominal voltage (V) | 3 |
| Nominal capacity (mAh) | 120 |
| Continuous standard load (mA) | 0.03 |
| Operating temperature (C) | -40 ~ +125 |

■ Temperature Characteristics



■ Temperature Characteristics

