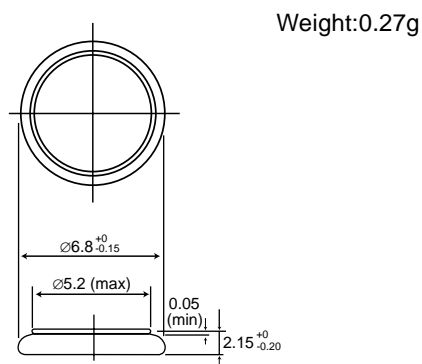


# Vanadium Pentoxide Lithium Coin Batteries (VL Series): Individual Specifications

## VL621

### ■ Dimensions(mm)

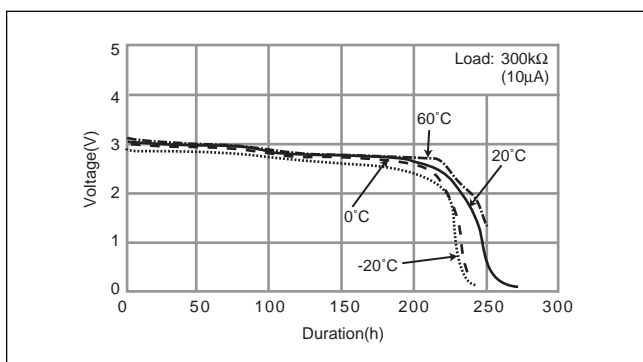


**Note:** This bare cell diagram is for size reference only. Please refer to the tab configurations at the end of this section for available tabs.

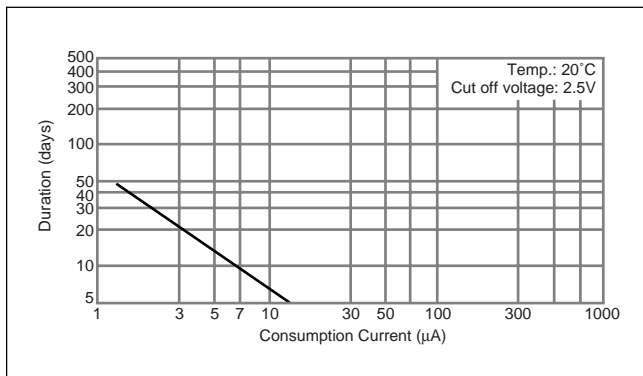
### ■ Specification

Nominal voltage (V)	3
Nominal capacity (mAh)	1.5
Continuous standard load (mA)	0.01
Operating temperature (C)	-20 ~ +60

### ■ Discharge Temperature Characteristics

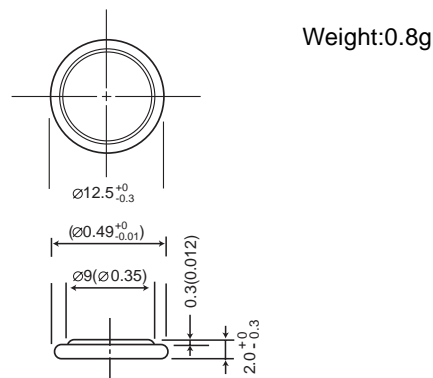


### ■ Consumption current vs. Duration time



## VL1220

### ■ Dimensions(mm)

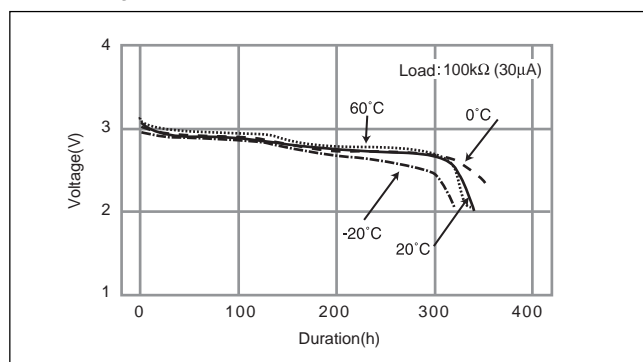


**Note:** This bare cell diagram is for size reference only. Please refer to the tab configurations at the end of this section for available tabs.

### ■ Specification

Nominal voltage (V)	3
Nominal capacity (mAh)	7.0
Continuous standard load (mA)	0.02
Operating temperature (C)	-20 ~ +60

### ■ Discharge Temperature Characteristics



### ■ Consumption current vs. Duration time

