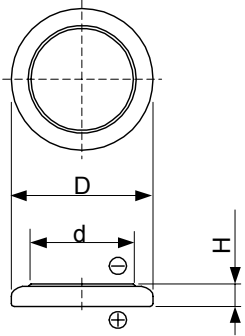


# Cell Type ML1220 Specifications



Nominal Capacity <sup>*1</sup>		15mAh
Nominal Voltage		3V
Standard Charge/Discharge Current		0.1mA
Max. Discharge Current	Continuous <sup>*2</sup>	2mA
	Pulse <sup>*3</sup>	5mA
Charge/Discharge Cycle Characteristics	Discharging Depth of 5%	3000
	Discharging Depth of 20%	500
Charging Method	Constant Voltage Charge	3.1±0.15V
	High Temperature	2.95±0.15V
Temperature Range		-20°C~60°C
Weight		0.8g
Dimensions	Diameter(D)	12.5mm
	Height(H)	2.0mm
	d	9.6mm

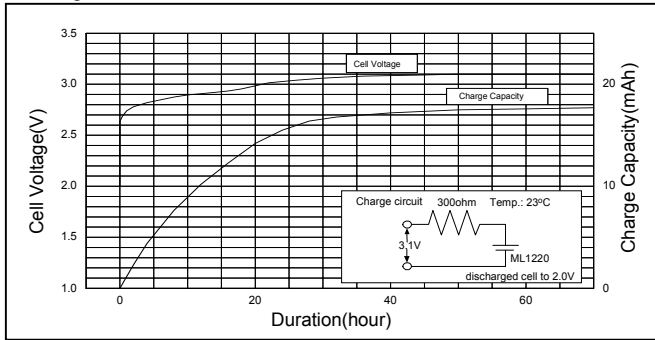
\*1 Nominal capacity is determined to an end voltage of 2.0V when the battery is allowed to discharge at a standard current level at 23°C.

\*2 Current value is determined so that 50% of the nominal capacity is obtained with an end voltage of 2.0V at 23 °C.

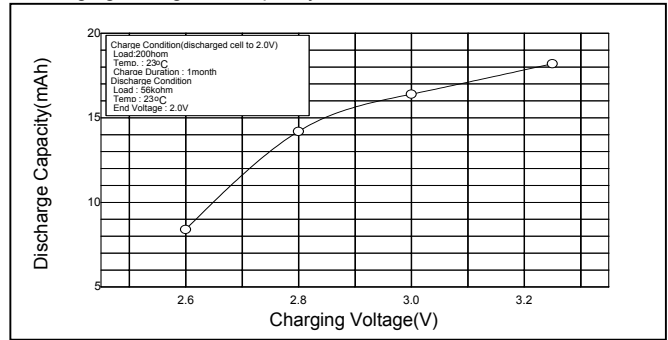
\*3 Current value for obtaining 2.0V cell voltage when 15sec. pulse is applied at 50% discharge depth at 23 °C.

## Typical Characteristics

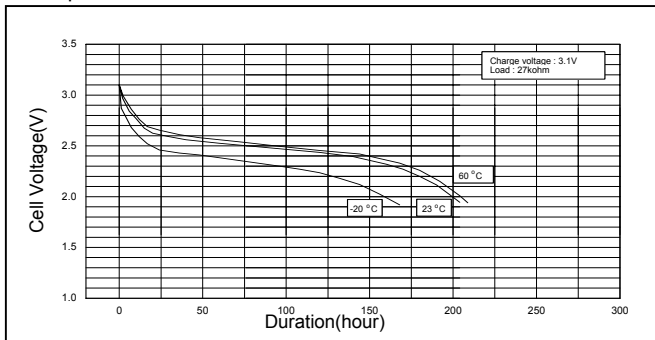
### Charge Characteristics of ML1220



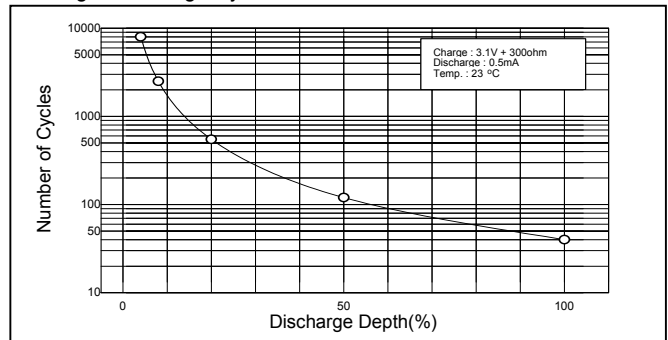
### Charging Voltage vs. Capacity of ML1220



### Temperature Characteristics of ML1220



### Charge/ Discharge Cycle Characteristics of ML1220



### Discharge Characteristics after Continuous Charge of ML1220

