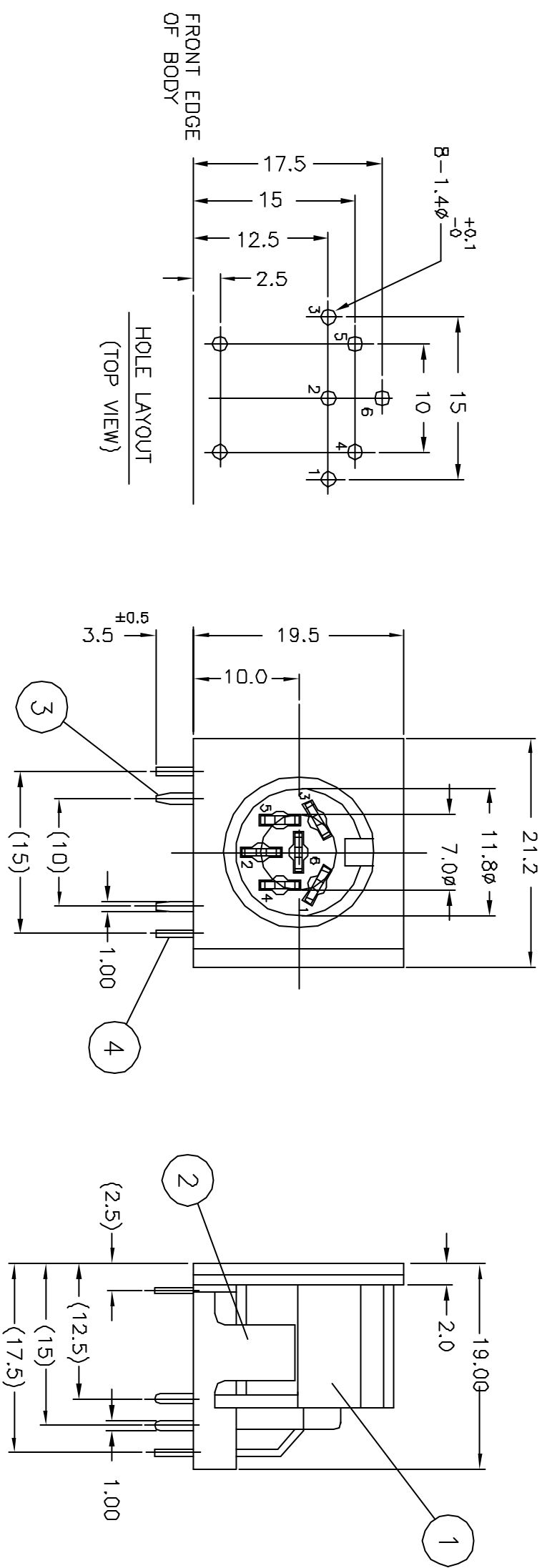
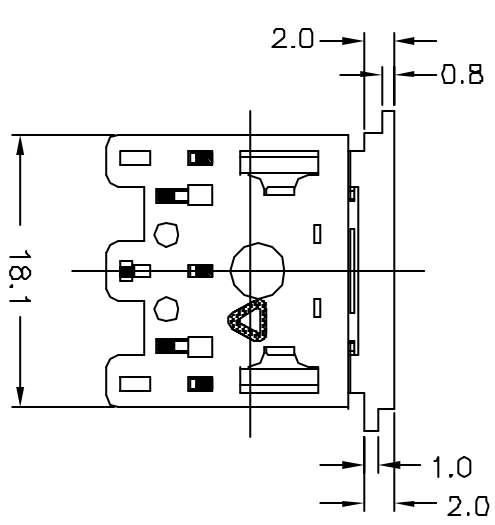


REV.	ECN NO OR DESCRIPTION	REVISED	DATE
C	修改與實物相符	EVEN	11/14-'03



SPECIFICATIONS:

1. CURRENT CARRYING CAPACITY:
 - 1) AC: 100V 1A MAX.
 - 2) DC: 24V 2A MAX.
2. CONTACT RESISTANCE:
 - 1) INITIAL, BEFORE LIFE CYCLE TEST. CONTACTOR TO PLUG PIN: 20mΩ MAX. EARTH TERMINAL TO PLUG SHELL: 100mΩ MAX.
 - 2) AFTER LIFE CYCLE TEST. CONTACTOR TO PLUG PIN: 100mΩ MAX. EARTH TERMINAL TO PLUG SHELL: 150mΩ MAX.
3. INSULATION RESISTANCE: BETWEEN ANY ADJACENT OPEN CONTACTS SHALL NOT BE LESS THAN 100MΩ AS SPECIFIED BELOW WITH AT 500V DC INSULATION RESISTANCE TEST.
4. DIELECTRIC STRENGTH: A POTENTIAL OF 500V AC RMS. 50/60HZ SHALL BE APPLIED BETWEEN ANY OPEN CONTACTS FOR ONE MINUTE WITHOUT BREAKDOWN.
5. INSERTION FORCE: 5.0Kg MAX.
6. WITHDRAWAL FORCE: 1.0Kg MIN.
7. LIFE CYCLE TEST: CONNECTOR SHALL BE SUBJECT TO 5,000 CYCLES AT 10 TO 20 CYCLES PER MINUTE WITH NO ELECTRICAL LOAD.



NO	DESCRIPTION	QTY	MATERIAL	PLATING & COLOR
4	CONTACT TERMINAL	6	BRASS 0.7t	TIN ALLOY PLATING
3	EARTH TERMINAL	1	PHOSPHOR BRONZE 0.25t	TIN ALLOY PLATING
2	COVER	1	PBT UL 94V-0	BLACK COLOR
1	BODY	1	PBT UL 94V-0	BLACK COLOR

UNLESS OTHERWISE SPECIFIED TOLERANCES

DECIMALS:	ANGLES:
X : ±0.3	X : ±2°
X.X : ±0.2	X.X : ±1°
X.XX : ±0.1	

TITLE	6P 240° DIN CONNECTOR		
DWN	ENR 11/14-'03	PART NO.	2DJ-0196PA02
CHKD	SN 11/18-'03	SCALE:	2/1
APVD	ANRW 11/18-'03	SIZE:	A3
		SHEET:	1 OF 1
		REV:	C

Singatron Enterprise Co., Ltd.
信音企業股份有限公司