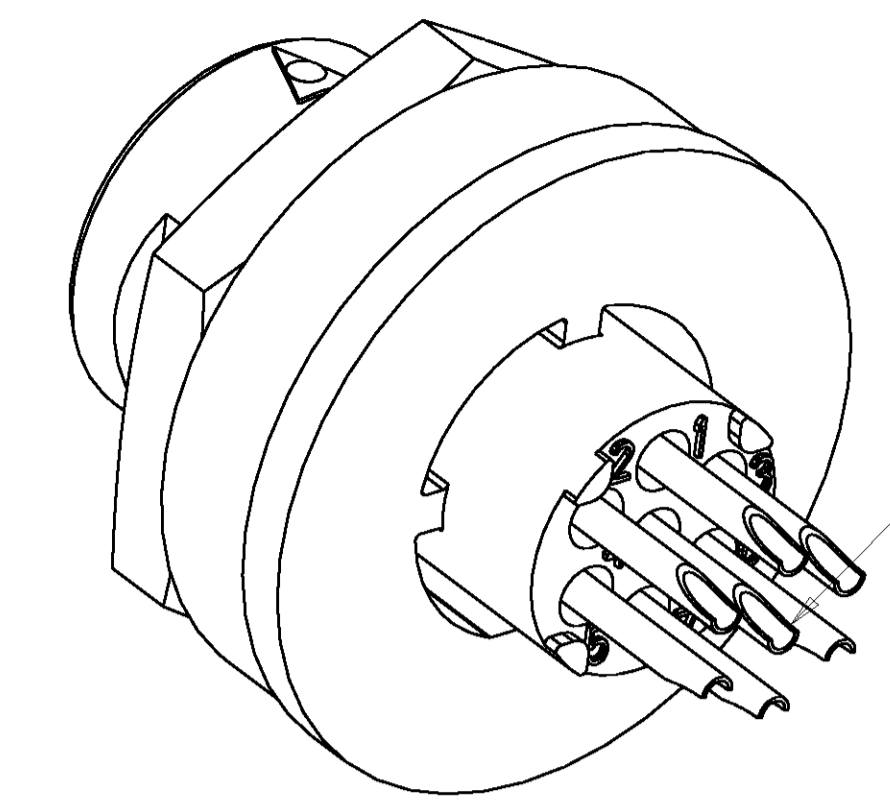
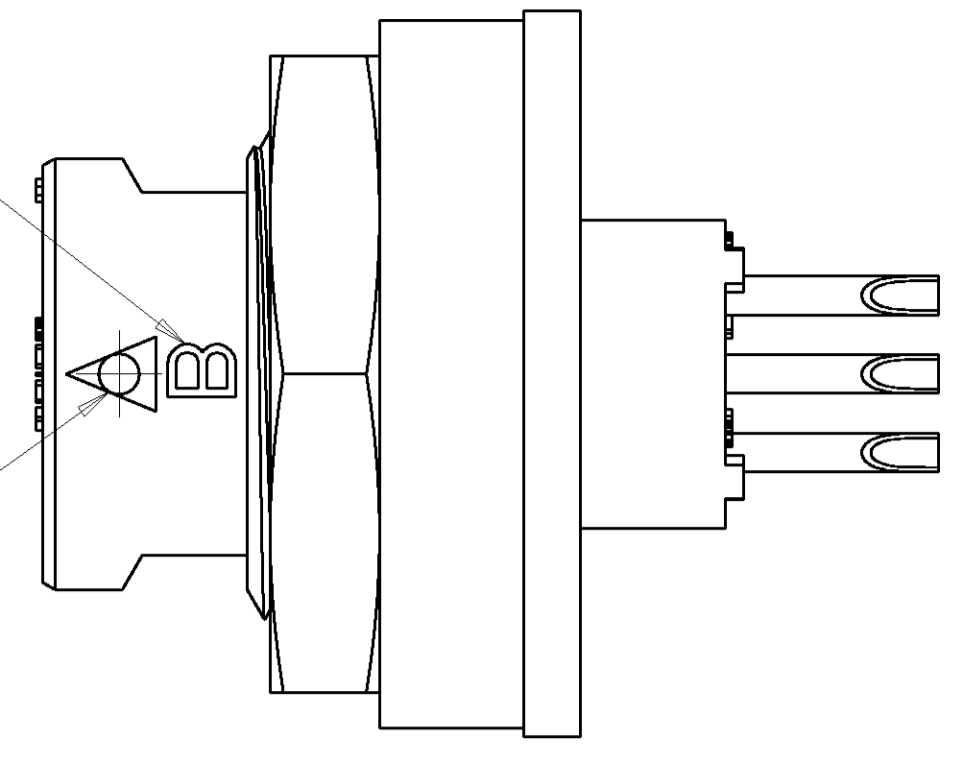


LOC		DIST		REVISIONS			
FT	0	P	LTR	DESCRIPTION	DATE	DWN	APVD
		A		RELEASED EC 0638-0570-04	29JUL2004	SW	HW
		B		REVISED EC 0638-0746-04	06OCT2004	SW	HW
		C		REVISED PER ECO-06-2703	24FEB2006	SS	DC
		CI		REVISED PER ECO-06-29350	19DEC2006	SS	DC

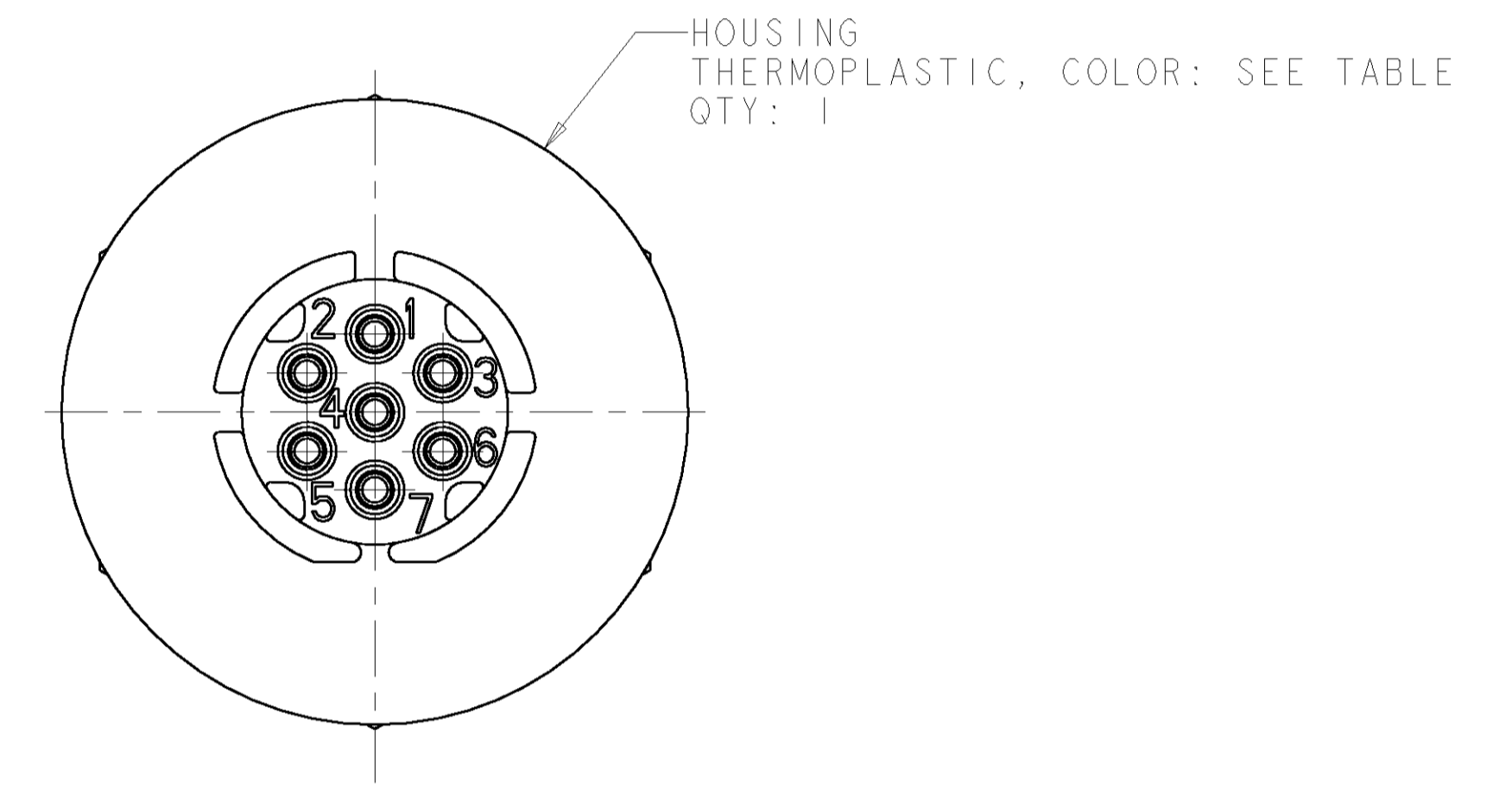
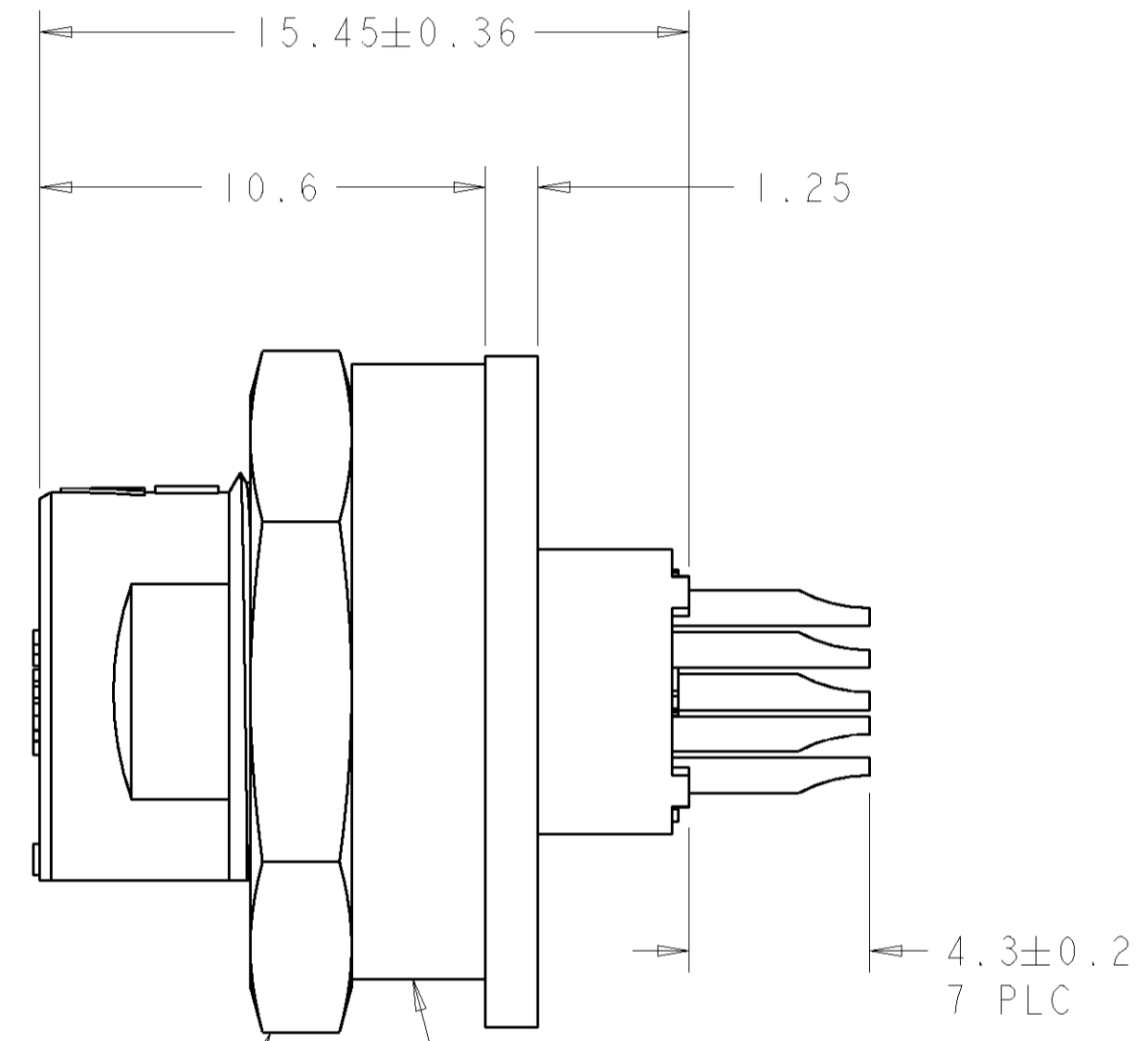
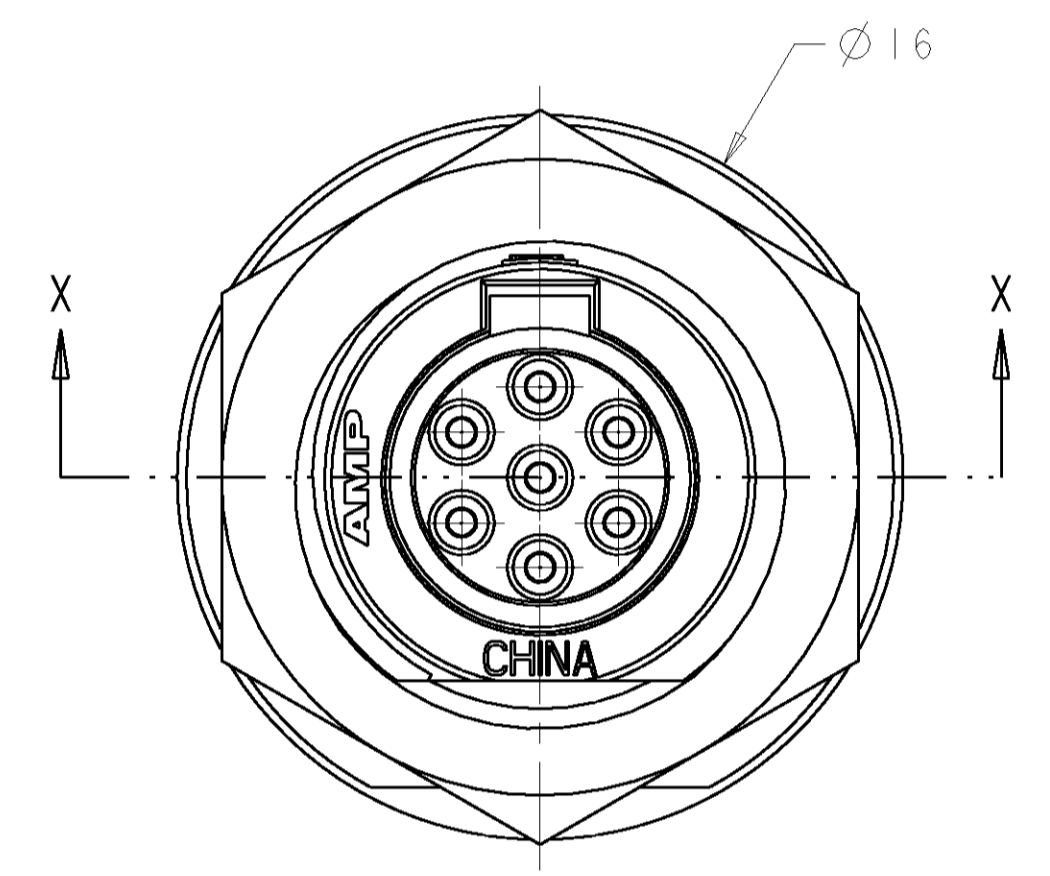
LATCH IDENTIFIER
 B-BREAKAWAY LATCH
 BREAKAWAY VERSION ONLY,
 MAY BE ORIENTED IN ANY DIRECTION

ALIGNMENT INDICATOR



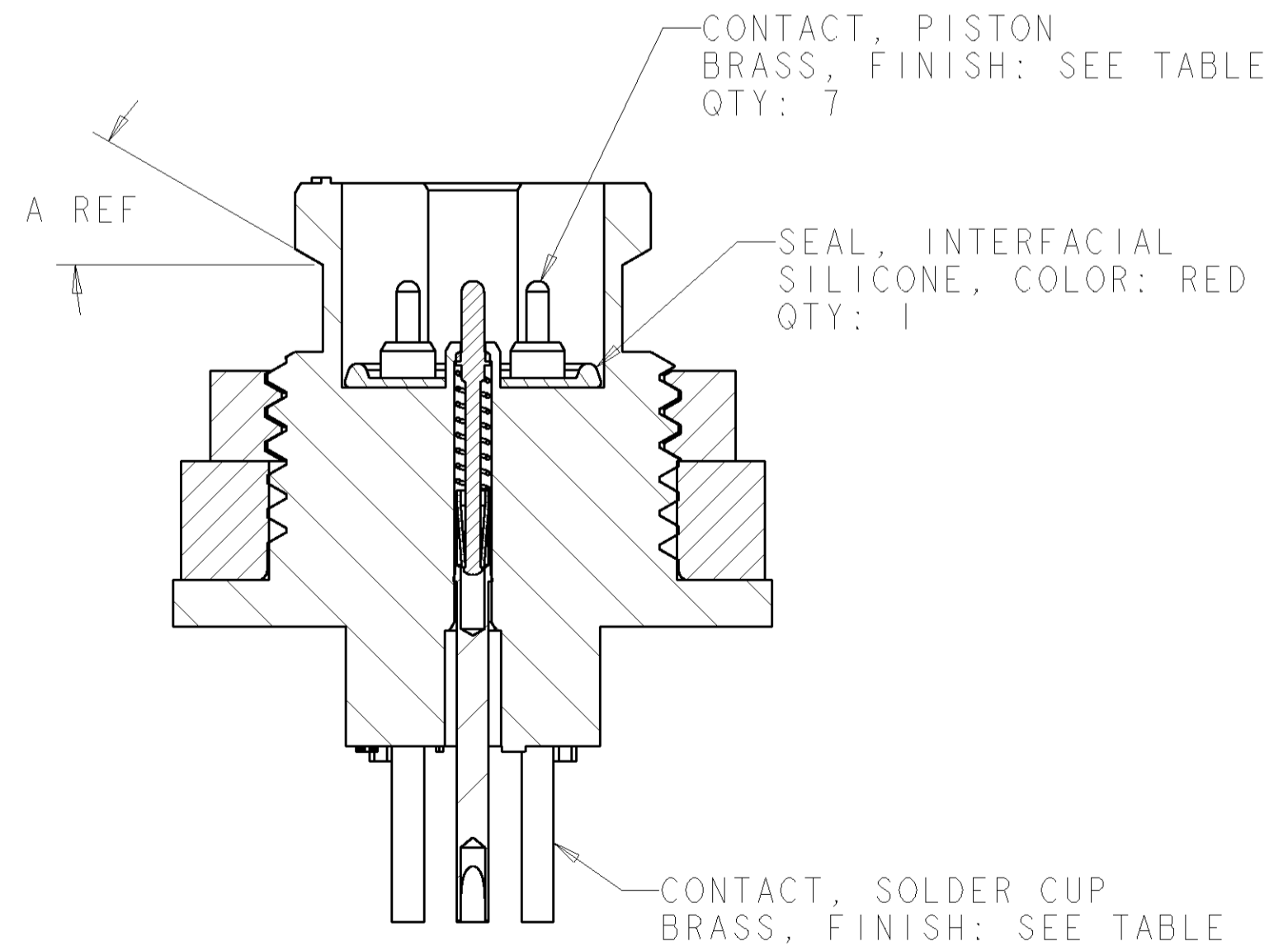
VIEW Z

SOLDER TERMINATION AREA OF CONTACT IN
 CIRCUIT #4 MAY BE ORIENTED UP OR DOWN

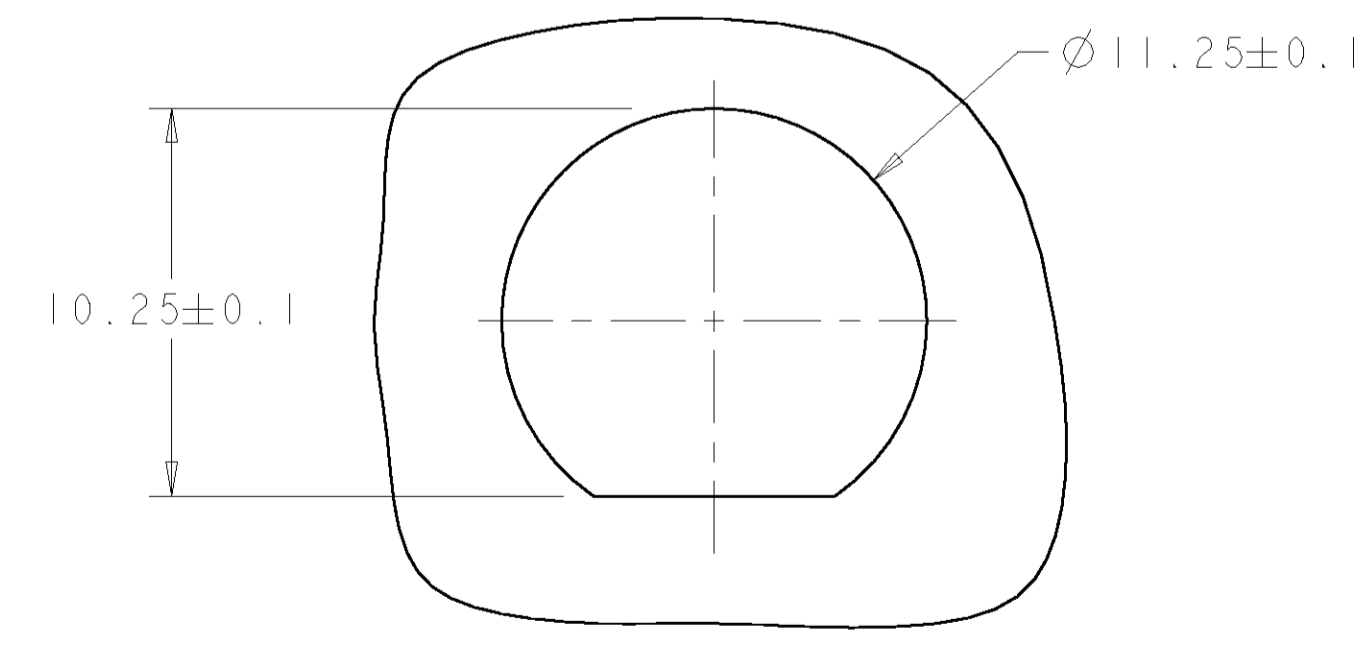


JAM NUT, SHOWN FOR REFERENCE ONLY
 TO BE ORDERED SEPARATELY, PART #1604197-1

GASKET, FLANGE, SHOWN FOR REFERENCE ONLY,
 TO BE ORDERED SEPARATELY, PART # 1445420-3



SECTION X-X



SUGGESTED PANEL CUTOUT
 3.18 MAX PANEL THICKNESS
 SCALE 5:1

DIMENSIONS:		TOLERANCES UNLESS OTHERWISE SPECIFIED:		DWN SHANE WIEST 31JUL2001		Tyco Electronics	
mm		0 PLC ±		ENR G DOUTY 31JUL2001		Harrisburg, PA 17105-3608	
Ø		1 PLC ±0.13		APVD H WAKEEM 29JUL2004		NAME	
HOLE		2 PLC ±		PRODUCT SPEC		RECEPTACLE ASSEMBLY, 7 POSITION, PANEL MOUNT, SPRING PROBE, SOLDER TAIL, MICRO CPC	
MATERIAL SEE CALLOUT		3 PLC ±		APPLICATION SPEC		SIZE CAGE CODE DRAWING NO RESTRICTED TO	
FINISH SEE CALLOUT		4 PLC ±		WEIGHT		A 00779 C=1445718	
		ANGLES ±		CUSTOMER DRAWING		SCALE 6:1 SHEET 1 OF 2 REV C1	

LOC	DIST	REVISIONS					
FT	0	P	LTR	DESCRIPTION	DATE	DWN	APVD
-	-	-	-	SEE SHEET 1	-	-	-

7	ALL	.0020 GOLD OVER NICKEL	TIN OVER NICKEL	0°	BLACK	POSITIVE	3-1445718-2
2	1,7.	.00025 GOLD OVER NICKEL	TIN OVER NICKEL	30°	WHITE	BREAKAWAY	3-1445718-1
2	1,7.	.00025 GOLD OVER NICKEL	TIN OVER NICKEL	0°	BLACK	POSITIVE	3-1445718-0
3	2,3,7.	.00025 GOLD OVER NICKEL	TIN OVER NICKEL	30°	WHITE	BREAKAWAY	2-1445718-9
3	2,3,7.	.00025 GOLD OVER NICKEL	TIN OVER NICKEL	0°	BLACK	POSITIVE	2-1445718-8
4	2,3,5,6.	.00025 GOLD OVER NICKEL	TIN OVER NICKEL	30°	WHITE	BREAKAWAY	2-1445718-7
4	2,3,5,6.	.00025 GOLD OVER NICKEL	TIN OVER NICKEL	0°	BLACK	POSITIVE	2-1445718-6
5	2,3,4,5,6.	.00025 GOLD OVER NICKEL	TIN OVER NICKEL	30°	WHITE	BREAKAWAY	2-1445718-5
5	2,3,4,5,6.	.00025 GOLD OVER NICKEL	TIN OVER NICKEL	0°	BLACK	POSITIVE	2-1445718-4
6	1,2,3,5,6,7.	.00025 GOLD OVER NICKEL	TIN OVER NICKEL	30°	WHITE	BREAKAWAY	2-1445718-3
6	1,2,3,5,6,7.	.00025 GOLD OVER NICKEL	TIN OVER NICKEL	0°	BLACK	POSITIVE	2-1445718-2
7	ALL	.00025 GOLD OVER NICKEL	TIN OVER NICKEL	30°	WHITE	BREAKAWAY	2-1445718-1
7	ALL	.00025 GOLD OVER NICKEL	TIN OVER NICKEL	0°	BLACK	POSITIVE	2-1445718-0
2	1,7.	.00025 GOLD OVER NICKEL	TIN-LEAD OVER NICKEL	30°	WHITE	BREAKAWAY	1-1445718-2
2	1,7.	.00025 GOLD OVER NICKEL	TIN-LEAD OVER NICKEL	0°	BLACK	POSITIVE	1-1445718-1
3	2,3,7.	.00025 GOLD OVER NICKEL	TIN-LEAD OVER NICKEL	30°	WHITE	BREAKAWAY	1-1445718-0
3	2,3,7.	.00025 GOLD OVER NICKEL	TIN-LEAD OVER NICKEL	0°	BLACK	POSITIVE	1445718-9
4	2,3,5,6.	.00025 GOLD OVER NICKEL	TIN-LEAD OVER NICKEL	30°	WHITE	BREAKAWAY	1445718-8
4	2,3,5,6.	.00025 GOLD OVER NICKEL	TIN-LEAD OVER NICKEL	0°	BLACK	POSITIVE	1445718-7
5	2,3,4,5,6.	.00025 GOLD OVER NICKEL	TIN-LEAD OVER NICKEL	30°	WHITE	BREAKAWAY	1445718-6
5	2,3,4,5,6.	.00025 GOLD OVER NICKEL	TIN-LEAD OVER NICKEL	0°	BLACK	POSITIVE	1445718-5
6	1,2,3,5,6,7.	.00025 GOLD OVER NICKEL	TIN-LEAD OVER NICKEL	30°	WHITE	BREAKAWAY	1445718-4
6	1,2,3,5,6,7.	.00025 GOLD OVER NICKEL	TIN-LEAD OVER NICKEL	0°	BLACK	POSITIVE	1445718-3
7	ALL	.00025 GOLD OVER NICKEL	TIN-LEAD OVER NICKEL	30°	WHITE	BREAKAWAY	1445718-2
7	ALL	.00025 GOLD OVER NICKEL	TIN-LEAD OVER NICKEL	0°	BLACK	POSITIVE	1445718-1
QTY	CIRCUITS LOADED	PISTON FINISH	SOLDER CUP	A	COLOR	LATCH	PART NUMBER
CONTACTS				HOUSING			

DIMENSIONS: mm 		TOLERANCES UNLESS OTHERWISE SPECIFIED: 0 PLC ± 1 PLC ±.013 2 PLC ± 3 PLC ± 4 PLC ± ANGLES ± FINISH ±		DWN SHANE WIEST 31JUL2001 CHK G DOUTY 31JUL2001 APVD H WAKEEM 29JUL2004		tyco Tyco Electronics Electronics Harrisburg, PA 17105-3608	
MATERIAL SEE CALLOUT		FINISH SEE CALLOUT		PRODUCT SPEC APPLICATION SPEC WEIGHT - CUSTOMER DRAWING		NAME RECEPTACLE ASSEMBLY, 7 POSITION, PANEL MOUNT, SPRING PROBE, SOLDER TAIL, MICRO CPC SIZE CAGE CODE DRAWING NO RESTRICTED TO A 00779 C=1445718 SCALE 6:1 SHEET 2 OF 2 REV C	