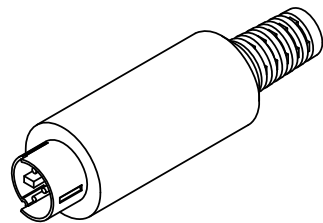
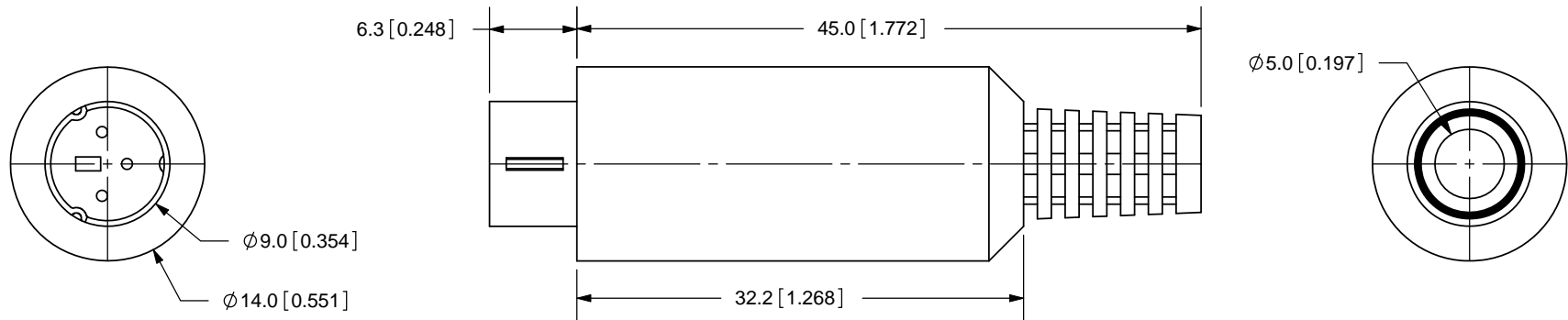


REV.	DESCRIPTION	DATE
A	NEW DRAWING	4/6/2006
B	updated dimensions	2/27/2008



SCALE 1:1

**NOTES:**

RECOMENDED WIRE RANGE: 24AWG~28AWG  
 LEAD TERMINATION: USE CRIMP PINS, PN: CP-9999 (DIGI-KEY)  
 CRIMP TOOL: AMP UNIVERSAL CRIMP TOOL

**SPECIFICATIONS:**

RATING: 12V DC @ 2A  
 CONTACT RESISTANCE: 30m OHMS MAX  
 INSULATION RESISTANCE: 50M OHMS MIN: 500V DC  
 VOLTAGE WITHSTAND: 500V AC R.M.S. FOR 1 MINUTE  
 LIFE: 5,000 CYCLES

**TOLERANCE:**

X.X  $\pm 0.2$ mm  
 X.XX  $\pm 0.1$ mm



20050 SW 112th Ave.  
 Tualatin, OR 97062  
 Phone: 503-612-2300  
 800-275-4899  
 Fax: 503-612-2383  
 Website: www.cui.com

	MATERIAL	PLATING
SHIELD	Brass	Nickel
CONTACT	Brass	Silver
COVER	PE-2L	
SHELL	ABS	
HOUSING	Nylon66+GF	

TITLE: MINI DIN IN-LINE PLUG		REV: B
PART NO. MD-30		UNITS: MM [INCHES]
DRAWN BY: ZRJ	APPROVED BY:	SCALE: 2:1

PC FILE NAME: MD-30

COPYRIGHT 2008 BY CUI INC.