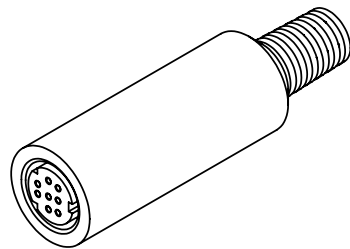
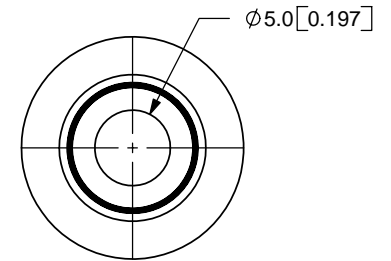
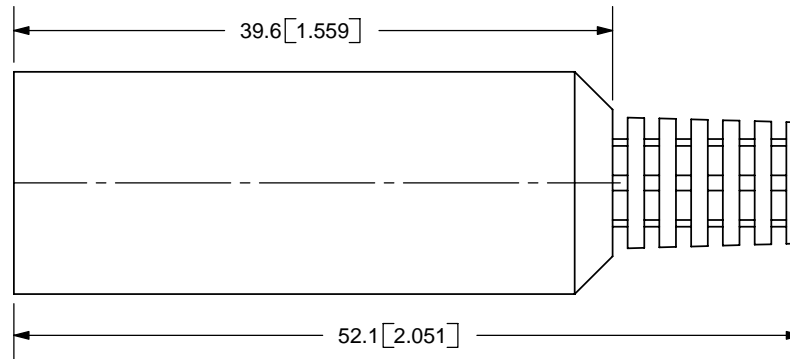
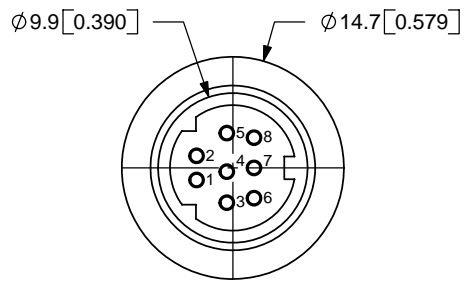


REV.	DESCRIPTION	DATE
A	NEW DRAWING	4/6/2006



SCALE 1:1

**NOTES:**

RECOMMENDED WIRE RANGE: 24AWG~28AWG  
 LEAD TERMINATION: USE CRIMP PINS, PN: CP-9999 (DIGI-KEY)  
 CRIMP TOOL: AMP UNIVERSAL CRIMP TOOL

**TOLERANCE:**

X.X ±0.1mm  
 X.XX ±0.05mm



**SPECIFICATIONS:**

RATING: 12V DC @ 2A  
 CONTACT RESISTANCE: 30m OHMS MAX  
 INSULATION RESISTANCE: 50M OHMS MIN: 250V DC  
 VOLTAGE WITHSTAND: 250V AC R.M.S. FOR 1 MINUTE  
 INSERTION FORCE: 4.5KG MAX  
 WITHDRAWAL FORCE: 0.9KG~3.0KG  
 LIFE: 5,000 CYCLES



**CUI INC**

20050 SW 112th Ave.  
 Tualatin, OR 97062  
 Phone: 503-643-4899  
 800-275-4899  
 Fax: 503-372-1266  
 Website: www.cui.com

	MATERIAL	PLATING
SHELL	Copper	Nickel
PIN CONTACTS	Brass	Silver
INSULATOR	Nylon66+Glass	
BOOT	EVA+LLDPE	
HOOD	ABS	

TITLE: MINI DIN IN-LINE JACK		REV: A
PART NO. MD-80J		UNITS: MM [INCHES]
DRAWN BY: ZRJ	APPROVED BY:	SCALE: 2:1

PC FILE NAME:  
MD-80J

COPYRIGHT 2006 BY CUI INC.