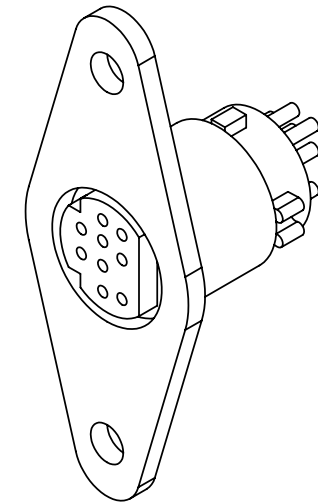
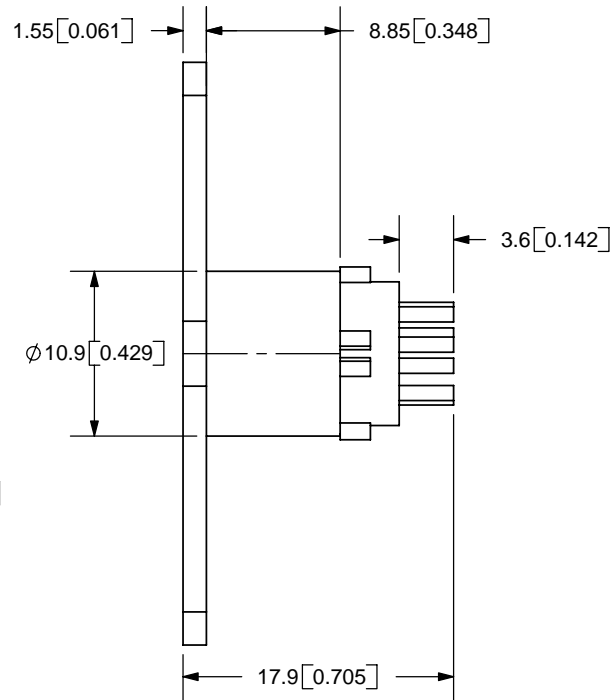
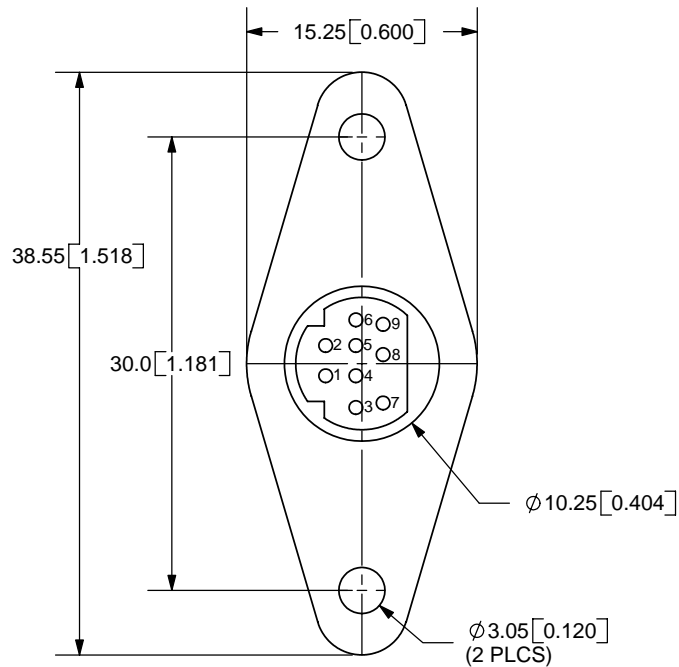


REV.	DESCRIPTION	DATE
A	NEW DRAWING	9/25/2006



TOLERANCE:  
 X.X  $\pm 0.05$ mm



**SPECIFICATIONS:**  
 RATING: 12V DC @ 2A; 100V AC @ 1A  
 CONTACT RESISTANCE: 30m OHMS MAX  
 INSULATION RESISTANCE: 50M OHMS MIN; 250V DC  
 VOLTAGE WITHSTAND: 250V AC R.M.S. FOR 1 MINUTE  
 INSERTION FORCE: 4.5KG MAX  
 WITHDRAWAL FORCE: 0.9KG~3.0KG  
 LIFE: 5,000 CYCLES



20050 SW 112th Ave.  
 Tualatin, OR 97062  
 Phone: 503-643-4899  
 800-275-4899  
 Fax: 503-372-1266  
 Website: www.cui.com

PC FILE NAME:  
 MD-90SN

COPYRIGHT 2006 BY CUI INC.

	MATERIAL	PLATING
SHELL	Brass	Nickel
CONTACTS	Phosphor Bronze	Silver
HOUSING	Fiber Nylon	

TITLE: PANEL MOUNT MINI DIN SOCKET		REV: A
PART NO. MD-90SN	UNITS: MM [INCHES]	
DRAWN BY: ZRJ	APPROVED BY:	SCALE: 2:1