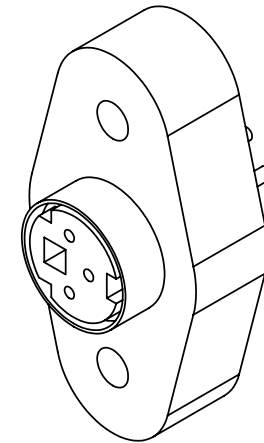
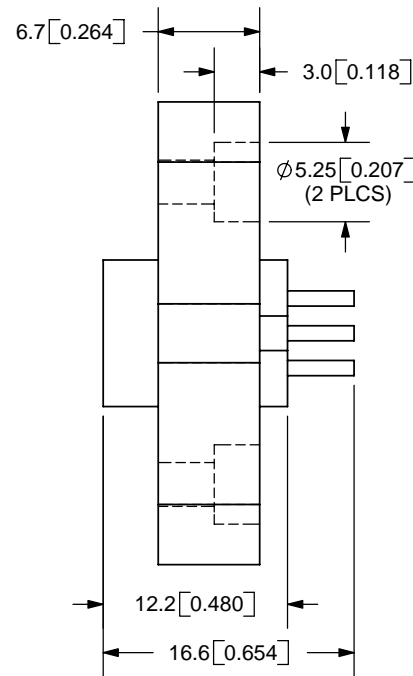
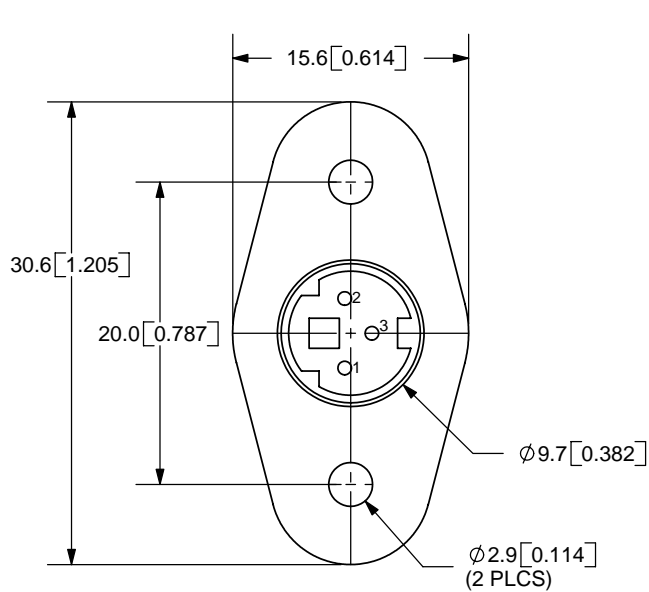


REV.	DESCRIPTION	DATE
A	NEW DRAWING	2/27/2006



TOLERANCE:  
X.X ±0.05mm  
X.XX ±0.05mm



**SPECIFICATIONS:**  
RATING: 12V DC @ 2A  
CONTACT RESISTANCE: 30m OHMS MAX  
INSULATION RESISTANCE: 50M OHMS MIN: 250V DC  
VOLTAGE WITHSTAND: 250V AC R.M.S. FOR 1 MINUTE  
LIFE: 5,000 CYCLES



**CUI INC**

20050 SW 112th Ave.  
Tualatin, OR 97062  
Phone: 503-643-4899  
800-275-4899  
Fax: 503-372-1266  
Website: www.cui.com

	MATERIAL	PLATING	TITLE: PANEL MOUNT MINI DIN SOCKET	REV: A
SHELL	Brass	Nickel	PART NO. MD-30SP	UNITS: MM [INCHES]
PINS	Phosphor Bronze	Silver		
BODY	ABS		DRAWN BY: ZRJ	APPROVED BY:
HOUSING	PBT			

PC FILE NAME:  
MD-30SP

COPYRIGHT 2006 BY CUI INC.