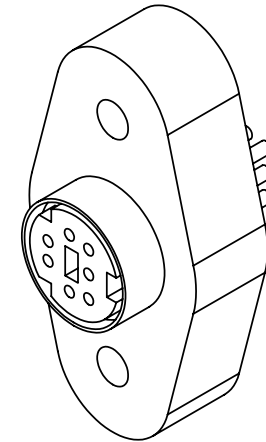
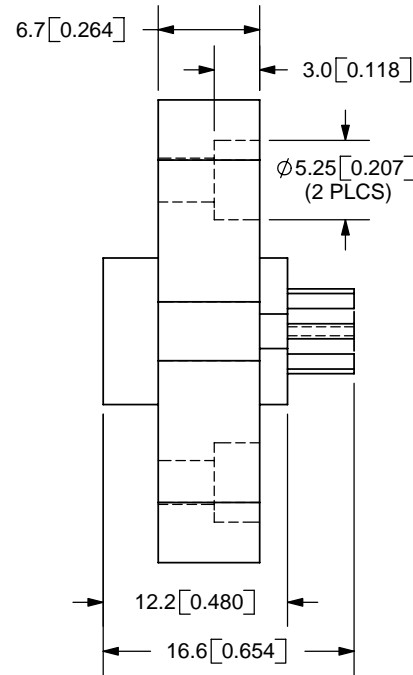
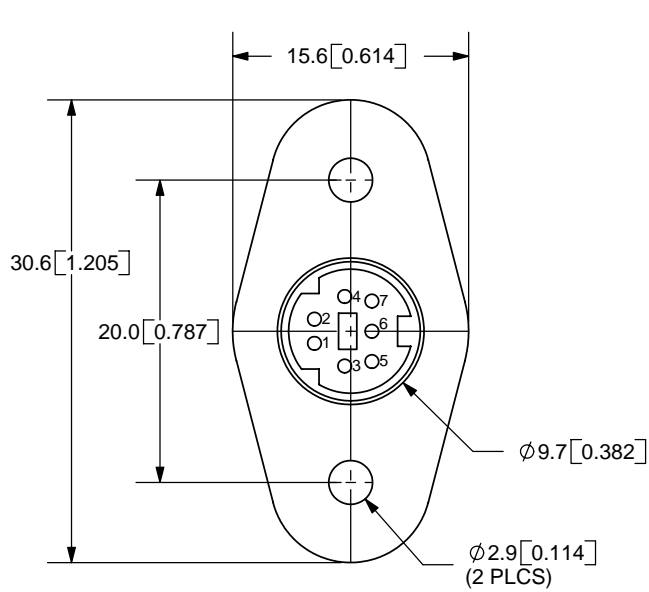


REV.	DESCRIPTION	DATE
A	NEW DRAWING	2/27/2006



TOLERANCE:
 X.X ± 0.05 mm
 X.XX ± 0.05 mm



SPECIFICATIONS:
 RATING: 12V DC @ 2A
 CONTACT RESISTANCE: 30m OHMS MAX
 INSULATION RESISTANCE: 50M OHMS MIN: 250V DC
 VOLTAGE WITHSTAND: 250V AC R.M.S. FOR 1 MINUTE
 LIFE: 5,000 CYCLES



20050 SW 112th Ave.
 Tualatin, OR 97062
 Phone: 503-643-4899
 800-275-4899
 Fax: 503-372-1266
 Website: www.cui.com

	MATERIAL	PLATING	TITLE: PANEL MOUNT MINI DIN SOCKET	REV: A
SHELL	Brass	Nickel	PART NO. MD-70SP	UNITS: MM [INCHES]
PINS	Phosphor Bronze	Silver		
BODY	ABS		DRAWN BY: ZRJ	APPROVED BY:
HOUSING	PBT			

PC FILE NAME:
 MD-70SP

COPYRIGHT 2006 BY CUI INC.