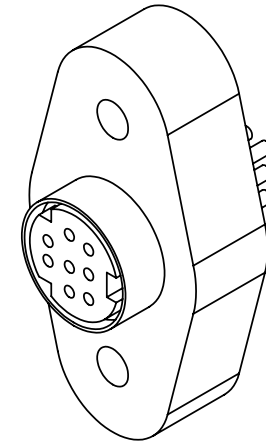
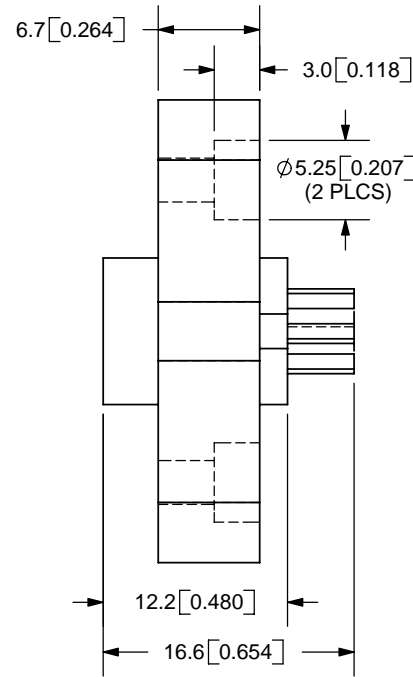
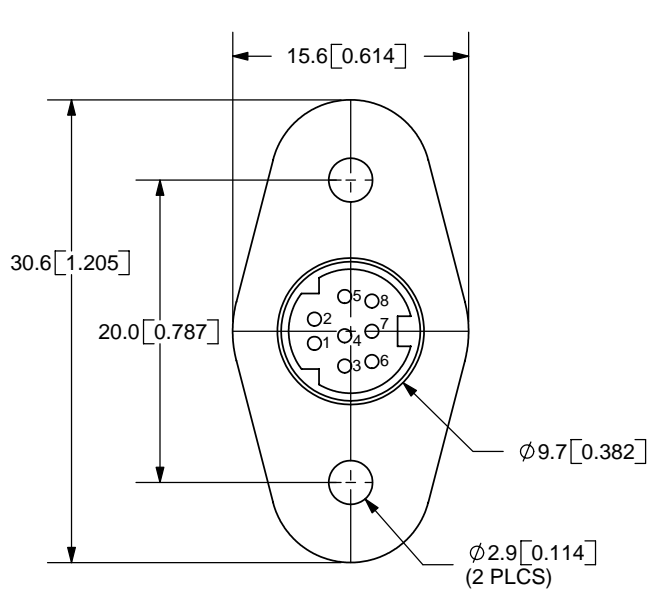


| | | |
|------|-------------|-----------|
| REV. | DESCRIPTION | DATE |
| A | NEW DRAWING | 2/27/2006 |



TOLERANCE:
 X.X ± 0.05 mm
 X.XX ± 0.05 mm



SPECIFICATIONS:
 RATING: 12V DC @ 2A
 CONTACT RESISTANCE: 30m OHMS MAX
 INSULATION RESISTANCE: 50M OHMS MIN: 250V DC
 VOLTAGE WITHSTAND: 250V AC R.M.S. FOR 1 MINUTE
 LIFE: 5,000 CYCLES



CUI INC

20050 SW 112th Ave.
 Tualatin, OR 97062
 Phone: 503-643-4899
 800-275-4899
 Fax: 503-372-1266
 Website: www.cui.com

| | | | | |
|---------|-----------------|---------|------------------------------------|--------------------|
| | MATERIAL | PLATING | TITLE: PANEL MOUNT MINI DIN SOCKET | REV: A |
| SHELL | Brass | Nickel | PART NO. MD-80SP | UNITS: MM [INCHES] |
| PINS | Phosphor Bronze | Silver | | |
| BODY | ABS | | DRAWN BY: ZRJ | APPROVED BY: |
| HOUSING | PBT | | | |

PC FILE NAME:
 MD-80SP

COPYRIGHT 2006 BY CUI INC.