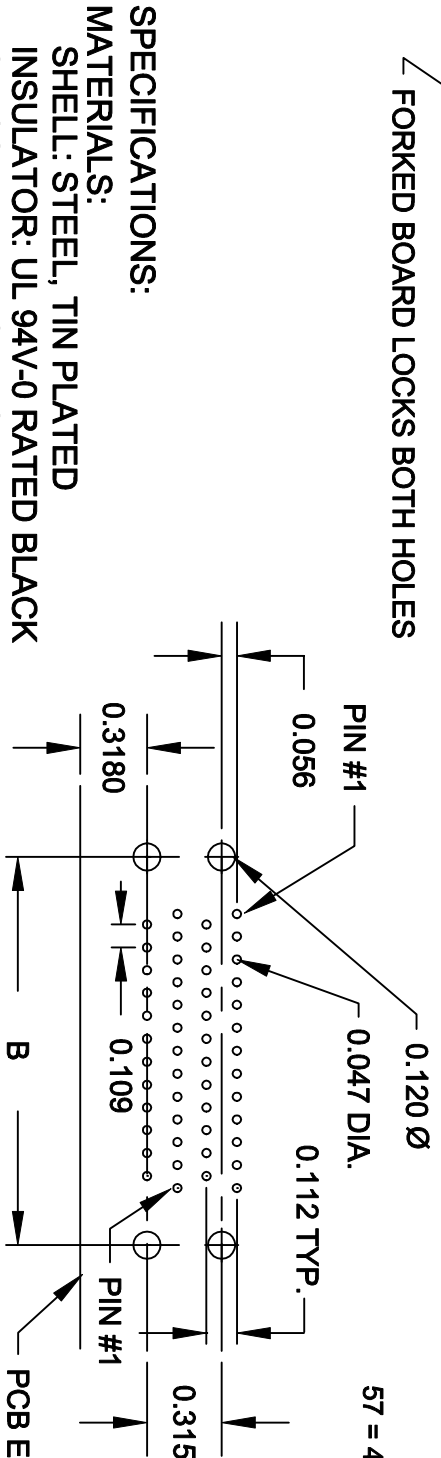
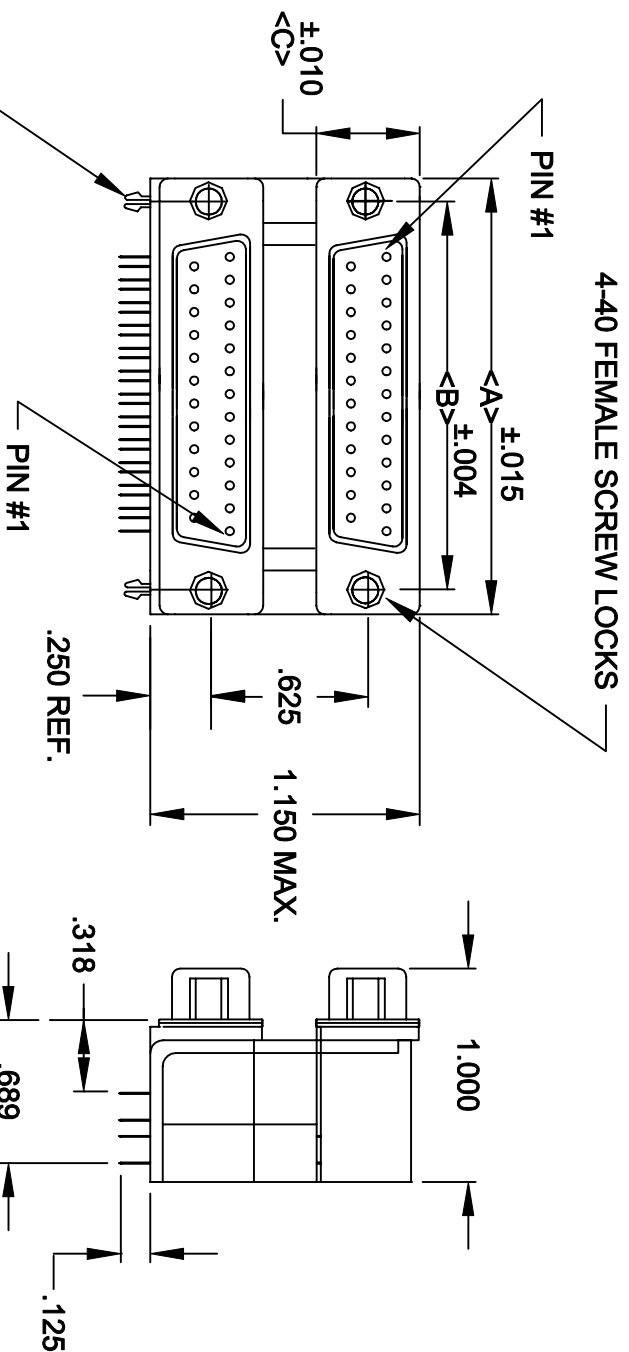


DESCRIPTION: .625 CENTER DUAL PORT D-SUB MALE/FEMALE



	A	B	C
9	1.204	.984	.494
	30.6	25.0	12.55
15	1.535	1.312	.494
	39.0	33.3	12.55
25	2.078	1.850	.494
	52.8	47.0	12.55
37	2.724	2.500	.494
	69.2	63.5	12.55

189-XXX-412-571

SERIES _____
 POSITIONS _____

009
 015
 025
 037

GENDER _____
 61 = MALE OVER MALE
 41 = MALE OVER FEMALE
 51 = FEMALE OVER FEMALE
 31 = FEMALE OVER MALE

SHELL PLATING _____
 2 = TIN
 HARDWARE OPTIONS _____
 57 = 4-40 STANDOFFS/FORK BOARD LOCKS
 PLATING OPTIONS _____
 01 = GOLD FLASH

FORKED BOARD LOCKS BOTH HOLES

4-40 FEMALE SCREW LOCKS

SPECIFICATIONS:

MATERIALS:

SHELL: STEEL, TIN PLATED
 INSULATOR: UL 94V-0 RATED BLACK
 GLASS-FILLED POLYESTER

ELECTRICALS:

CURRENT RATING: 5 AMPS
 DIELECTRIC STRENGTH: 1000V AC RMS
 INSULATOR RESISTANCE: 1000 MOHMS MIN
 TEMPERATURE: -55°C TO +105°C



THESE DRAWINGS AND SPECIFICATIONS ARE THE PROPERTY OF NorComp AND SHALL NOT BE REPRODUCED, COPIED OR USED AS THE BASIS FOR THE MANUFACTURE OF APPARATUS WITHOUT WRITTEN PERMISSION.

NorComp

DRAWN: PAM JENKINS	DATE: 9-24-98
CHECKED:	DATE:
SCALE: 1:1	SHEET 1 OF 1
DWG NO. 189-XXX-412-571	REV 5