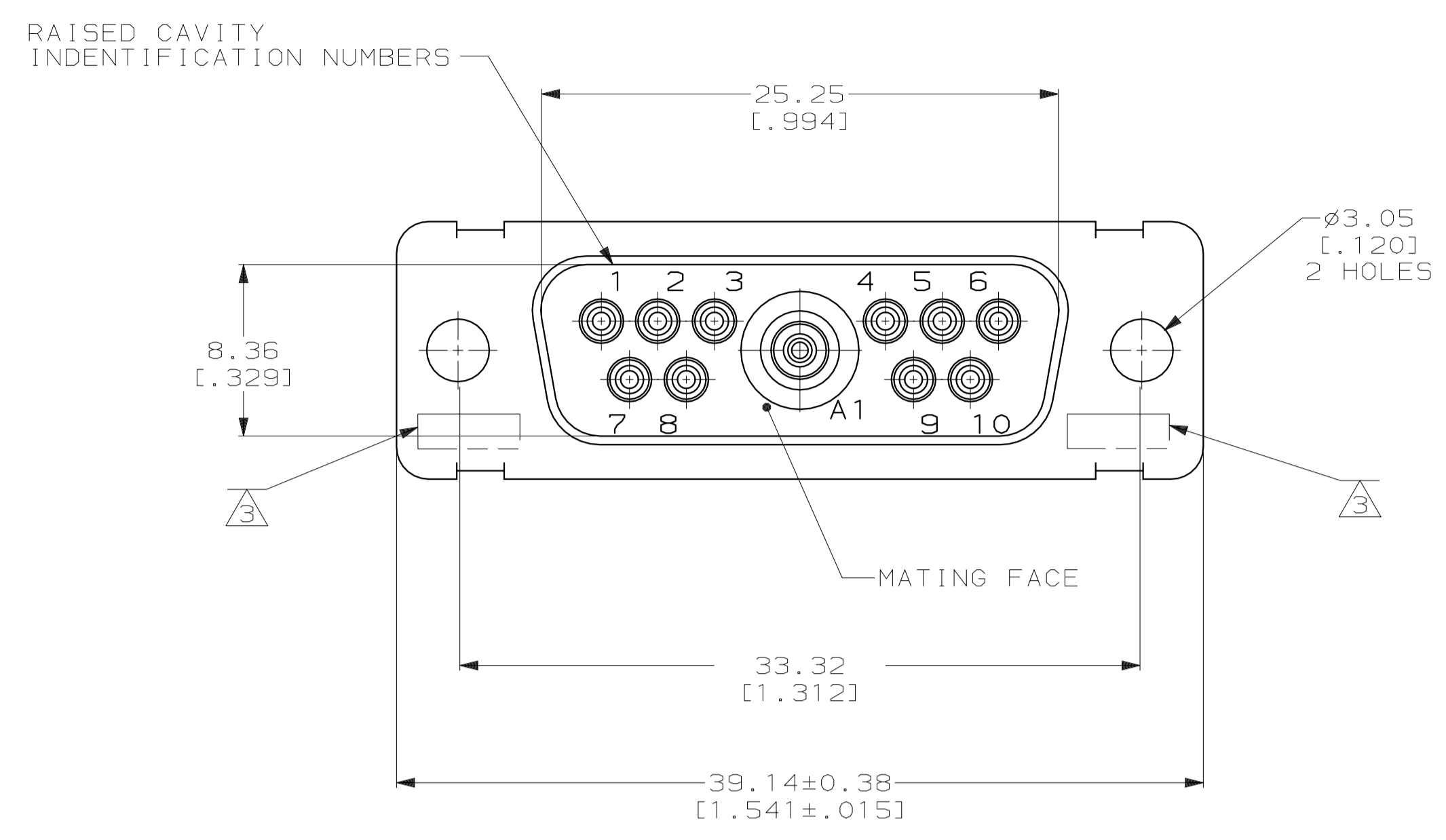
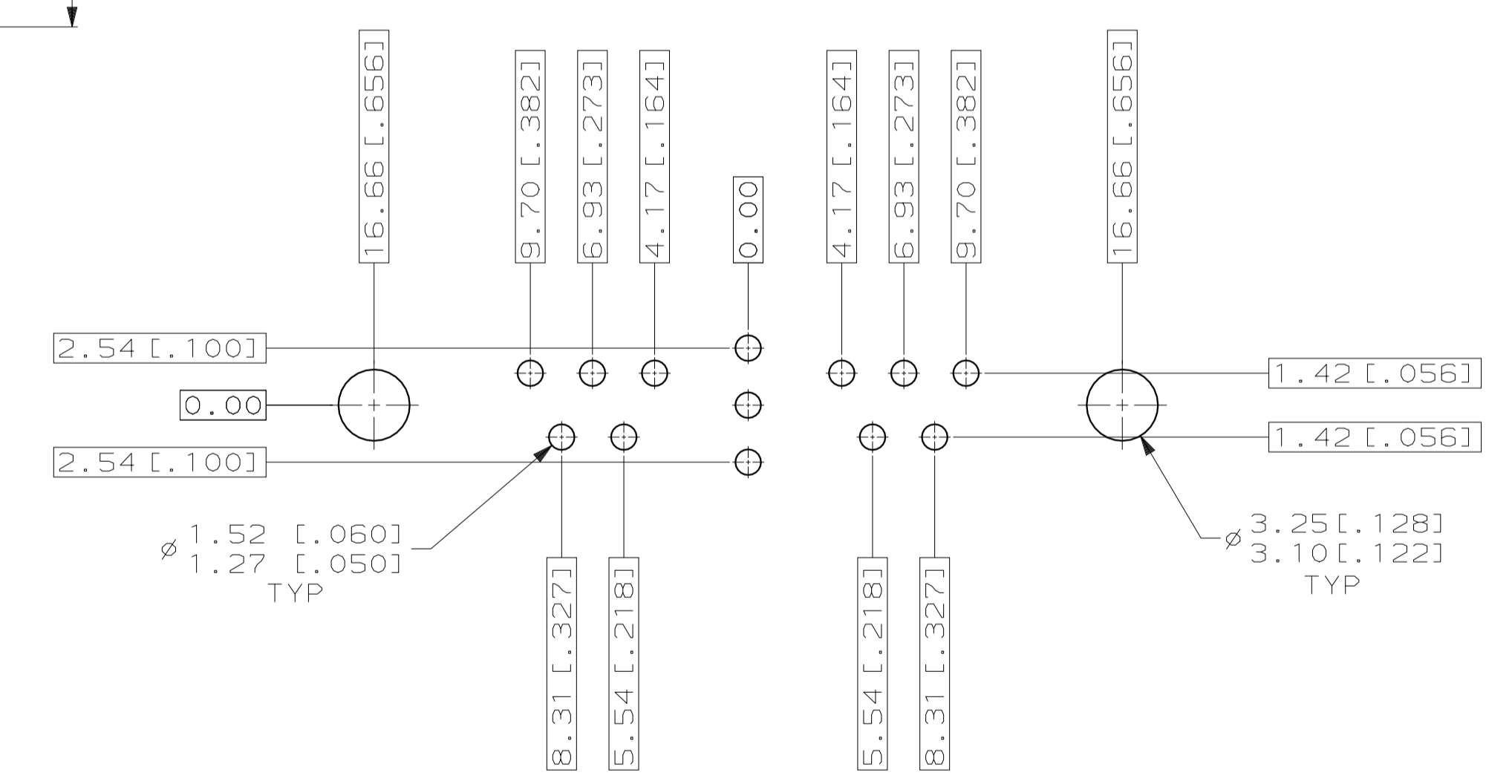
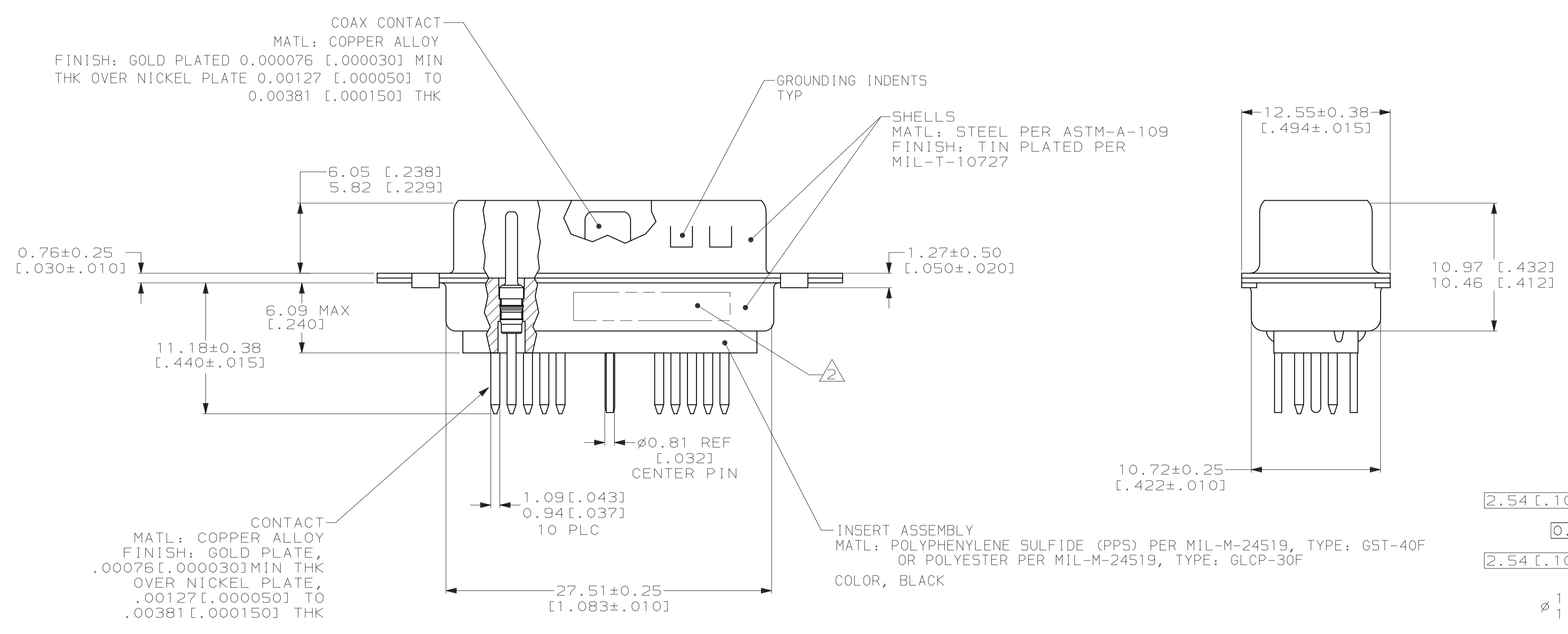


REVOLUTIONS		REVISIONS			
LOC	DIST	REV	DATE	BY	APPV
DF	DO	E	REV PER 063D-0242-03	5-03	CT LO



1. THE CONNECTORS DESCRIBED IN THIS DOCUMENT SHALL BE CAPABLE OF MEETING THE REQUIREMENTS OF 108-1770-1 AND MATE WITH ANY APPLICABLE RECEPTACLE CONNECTOR WITH SAME INSERT ARRANGEMENT.
2. MARKED WITH 1.19[.047]-1.57[.062] HIGH CHARACTERS. FAR SIDE REFERS TO THE WIDE SIDE OF THE KEYSTONE. NEAR SIDE REFERS TO THE NARROW SIDE OF THE KEYSTONE. IF THE FRONT SHELL IS TOO SMALL FOR "AMP", AMP PART NUMBER AND DATE CODE, THEN SPLIT AS FOLLOWS:
 - A. AMP PART NUMBER ON REAR SHELL, NEAR SIDE.
 - B. "AMP" AND DATE CODE ON REAR SHELL, FAR SIDE.
3. UL/CSA DESIGNATION STAMPED IN THIS AREA, OPTIONAL.
4. CENTER CONDUCTOR OF THE COAX CONTACT IS ONLY COMPATIBLE WITH A .040 [1.02] DIA MATING PIN.



1218763-1
 PART NUMBER

THIS DRAWING IS A CONTROLLED DOCUMENT.		DWN C.C. THOMAS 6-28-00	AMP Incorporated Harrisburg, PA 17105-3608
DIMENSIONS: mm (INCHES)		CHK D. MILLER 9-18-00	
TOLERANCES UNLESS OTHERWISE SPECIFIED:		APP'D D. MILLER 9-18-00	NAME
0 PLC ±-	1 PLC ±-	PRODUCT SPEC	ASSY, AMPLIMITE, PLUG, 11C1
2 PLC ±0.3 (.01)	3 PLC ±0.13 (.005)	APPLICATION SPEC	LOW PROFILE, SIZE 2, SERIES 109
4 PLC ±-	ANGLES ±2°	SIZE	A1
MATERIAL SEE CALLOUTS	FINISH SEE CALLOUTS	WEIGHT	00779 1218763
CUSTOMER DRAWING		SCALE	4:1
		SHEET	1 OF 1
		REV	E