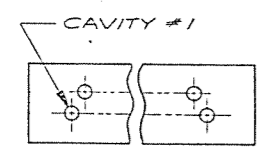
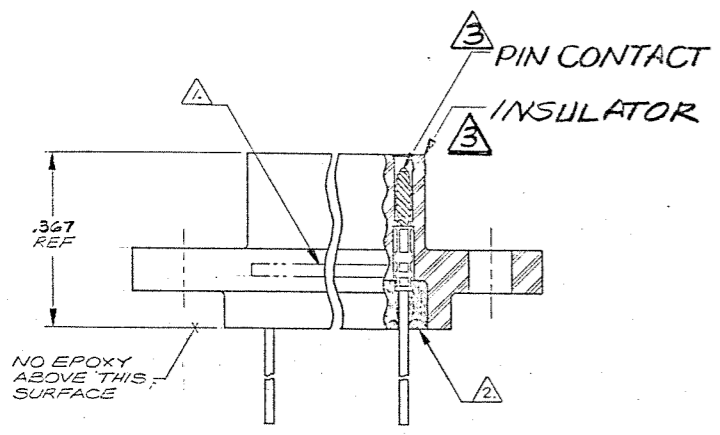
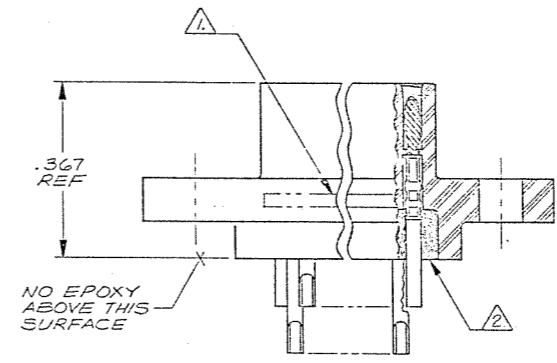
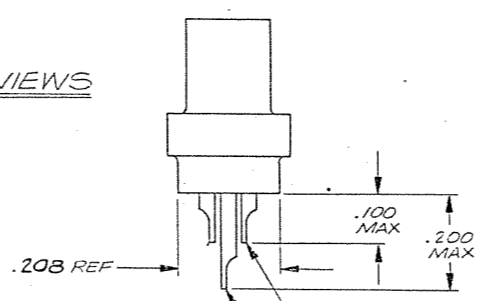
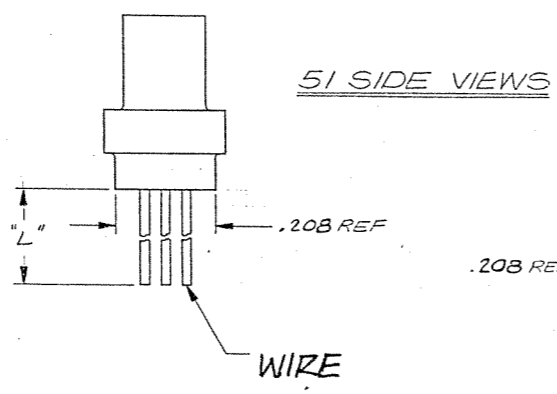
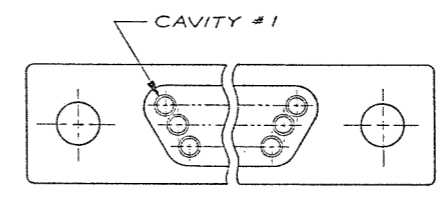
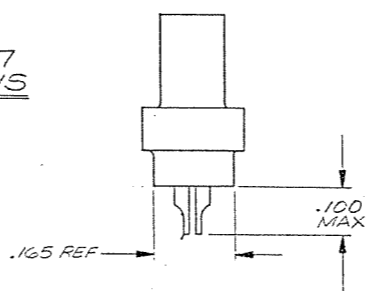
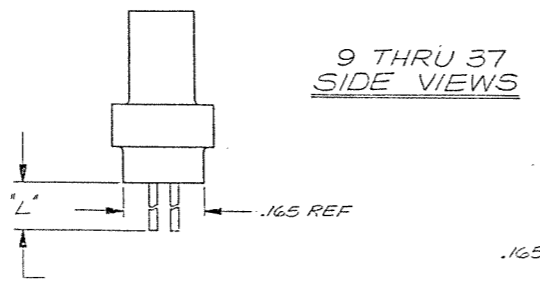
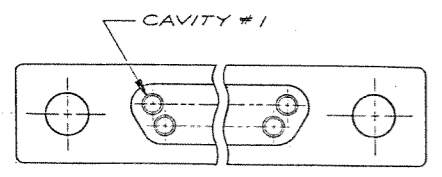


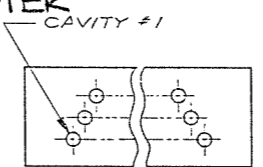
8 7 6 5 4 3 2 1

REVISIONS					
ZONE	LTR	ECN	DESCRIPTION	DATE	APPROVED
A		26593	RELEASE TO PRODUCTION	1/13/73	

**B Combine M & CD Dwg**



REAR VIEW OF PLUG CAVITY LAYOUT



REAR VIEW OF PLUG CAVITY LAYOUT

**9 THRU 37 CONFIGURATION**

(SHOW WITH WIRE TERMINATIONS FOR REFERENCE ONLY. SOLDER POT TERMINATIONS ARE THE SAME CONFIGURATION)

**51 CONFIGURATION**

(SHOW WITH SOLDER POT TERMINATIONS FOR REFERENCE ONLY. WIRE TERMINATIONS ARE THE SAME CONFIGURATION)

**NOTES: UNLESS OTHERWISE SPECIFIED**

- 1. MARK "MALCO" OR MALCO LOGO, MILITARY PART NO. (e.g. MB3513/06-\*), CODE IDENT. NO., & DATE CODE WITH .047 MIN HIGH CHARACTERS IN APPROXIMATE LOCATION SHOWN.
- 2. EPOXY USING HYSOL #4215 & 3561.

- 3. SOLDER POT; MATL: BRASS PER QQ-B-626, COMP 360, 1/2 HARD  
FINISH: COPPER ALLOY/GOLD PLATED
- PIN CONTACT; MATL: COPPER ALLOY/GOLD PLATED
- HOUSING; MATL: (R3) POLYPHENYLENE SULFIDE RYTON 4-04 (BR-68) PER MIL-M-24519, COLOR BROWN

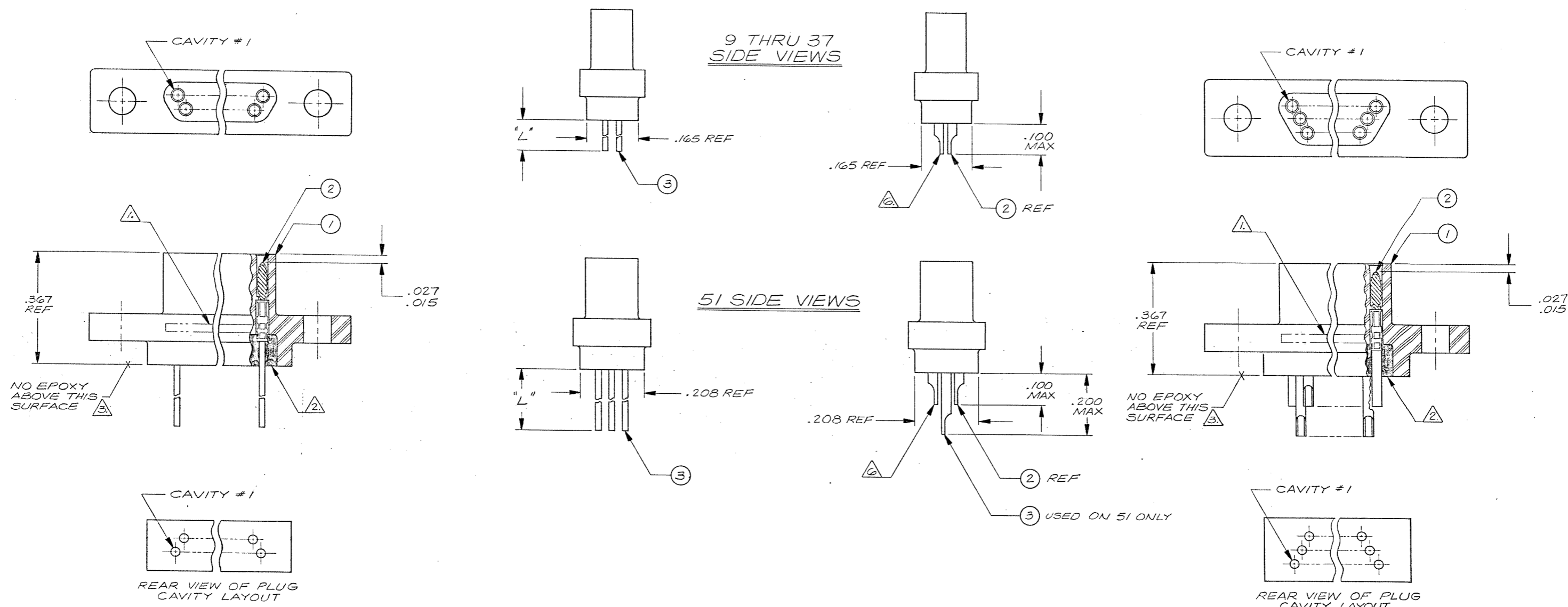
**Tyco Customer Drawing 1-1532149-4**

QTY	CODE	PART OR	NOMENCLATURE
REQD	IDENT	IDENTIFYING NO.	OR DESCRIPTION
PARTS LIST			
UNLESS OTHERWISE SPECIFIED DIMENSIONS ARE IN INCHES TOLERANCES ARE:		CONTRACT NO.	
FRACTIONS	DECIMALS	ANGLES	
±	.XX ±	±	
	.XXX ±		
MATERIAL	APPROVALS	DATE	MALCO A MICRODOT COMPANY, INC. 306 PASADENA AVE., SQ. PASADENA, CALIF. 91030 <b>RACK &amp; PANEL CONNECTOR, PLUG MCD PER MIL-C-83513</b> PROD. CODE 824 CODE CD
FINISH	CHECKER	1/4/73	
APPLICATION	PR. ENG.	1-5-73	
			SIZE CODE IDENT. NO. DRAWING NO. D 98278 095-0000-0445
			SCALE: NONE SHEET / OF /

8 7 6 5 4 3 2 1

REVISIONS					
ZONE	LTR	ECN	DESCRIPTION	DATE	APPROVED
	A	26593	RELEASE TO PRODUCTION	5-18-82	<i>[Signature]</i>

**B Combine M & CD Dwg**



**9 THRU 37 CONFIGURATION**

(SHOW WITH WIRE TERMINATIONS FOR REFERENCE ONLY. SOLDER POT TERMINATIONS ARE THE SAME CONFIGURATION)

**51 CONFIGURATION**

(SHOWN WITH SOLDER POT TERMINATIONS FOR REFERENCE ONLY. WIRE TERMINATIONS ARE THE SAME CONFIGURATION)

**NOTES: UNLESS OTHERWISE SPECIFIED**

- 1. MARK "MALCO" OR MALCO LOGO, MILITARY PART NO. (e.g. M83513/06-\*), CODE IDENT. NO., & DATE CODE WITH .047 MIN HIGH CHARACTERS IN APPROXIMATE LOCATION SHOWN.
- 2. EPOXY USING HYSOL # 4215 & 3561.
- 3. EPOXY WICKING - UNINSULATED WIRE — .050 MAX.  
INSULATED WIRE UP TO # 25 AWG — .125 MAX.  
INSULATED WIRE # 24 AWG OR LARGER — .200 MAX.
- 4. CRIMP LEADS OR SOLDER POTS INTO CONTACTS PER MEP 302-05.
- 5. NO SCRATCHES SHOWING BASE METAL PERMITTED ON SOLDER POTS.
- 6. CHAMFER ON SOLDER POTS ARE TO BE PARALLEL WITH SIDES OF CONNECTOR WITHIN 10 DEGREES.

**Tyco Customer Drawing 1-1532149-4**

QTY REQD	CODE IDENT	PART OR IDENTIFYING NO.	NOMENCLATURE OR DESCRIPTION
PARTS LIST			
UNLESS OTHERWISE SPECIFIED DIMENSIONS ARE IN INCHES TOLERANCES ARE:		CONTRACT NO.	
FRACTIONS ±	DECIMALS .XX ±	ANGLES ±	APPROVALS
	.XXX ±		DATE
MATERIAL		DRAWN <i>G SAUER</i> 5-12-82	
FINISH		CHECKED <i>[Signature]</i> 5-17-82	
NEXT ASSY		PR. ENG. <i>[Signature]</i> 5-17-82	
USED ON		APPD. <i>[Signature]</i>	
APPLICATION		MALCO A MICRODOT COMPANY, INC. 306 PASADENA AVE., SO. PASADENA, CALIF. 91030 <b>RACK &amp; PANEL CONNECTOR, PLUG MCD PER MIL-C-83513 M</b>	
DO NOT SCALE DRAWING		SIZE <b>D</b>	CODE IDENT NO. <b>98278</b> DRAWING NO. <b>095-0000-0445</b>
		SCALE <i>NONE</i>	SHEET / OF /