

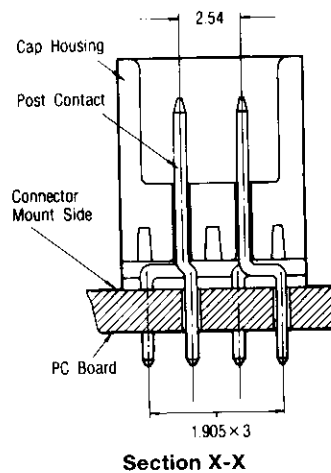
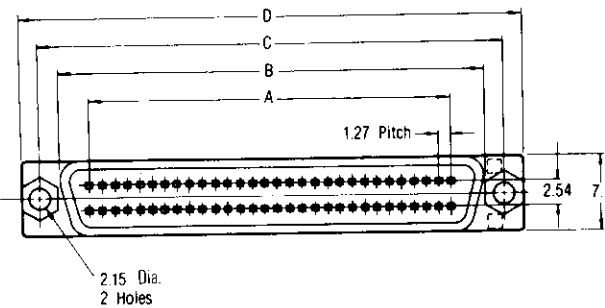
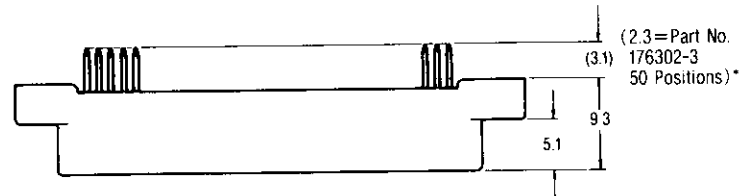
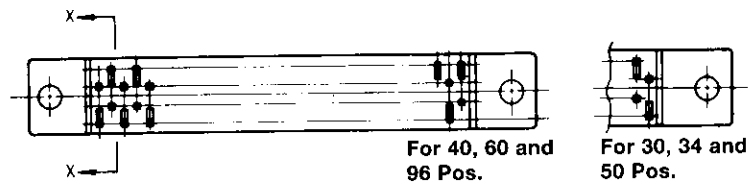
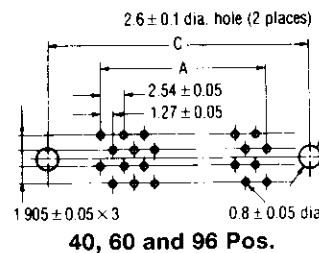
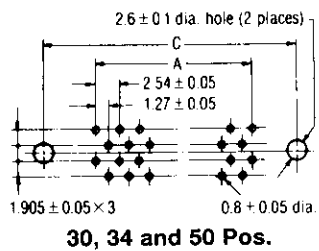
# Board to Board Connectors AMPLIMITE 050 Series Connectors/Board to Board Connections — Series I Cap Assembly/Vertical Mount

## With Screw Mounting Hole

### Material & Finish:

Housing—UL94V-0 rated, thermoplastic, black  
Contact—Phosphor bronze, duplex plated 0.2 $\mu$ m min. or 0.76 $\mu$ m min. gold on contact area, 1 $\mu$ m min. tin-lead or tin on soldering area, with entire contact underplated 1.27 $\mu$ m min. nickel.

## PC Board Mounting Dimensions (Connector Mounting Side)



No. of Pos.	Dimensions				Part Number of Cap Assembly Vertical Mount Type	
	A	B	C	D	0.2 $\mu$ m	0.76 $\mu$ m
30	17.78	23.8	27.75	31.8	173280-1	6-173280-1
34	20.32	26.3	30.29	34.3	173280-5	6-173280-5
40	24.13	30.1	34.10	38.1	173280-2	6-173280-2
50	30.48	36.5	40.45	44.5	173280-3	6-173280-3
60	36.83	42.8	46.80	50.8	173280-4	6-173280-4
96	59.69	65.7	69.66	73.7	173280-8	6-173280-8

Note: To mount connector to the board, use M2 screws and nuts.