

DIMENSIONS (IN.)						
No. OF PINS	A	B	C	D	E	F
15	0.643	0.984	1.213	0.759	0.010	0.090
25	0.971	1.312	1.541	1.083	0.020	0.090
44	1.511	1.852	2.088	1.625	0.020	0.090
62	2.159	2.500	2.729	2.272	0.023	0.094

RoHS COMPLIANT

MATERIALS AND FINISH:

SHELL: STEEL MATERIAL, NICKEL FINISH  
INSULATOR: PBT THERMOPLASTIC 30% GLASS FILLED, UL 94V-0 RATED, BLACK COLOR  
CONTACT MATERIAL: BRASS  
CONTACT FINISH: SELECTIVE GOLD FINISHED

ELECTRICAL:

CONTACT CURRENT RATING: 5 AMPS  
CONTACT RESISTANCE: 30 Milliohms Max.  
DIELECTRIC WITHSTANDING VOLTAGE: 1,00VAC Min.  
INSULATION RESISTANCE: 5,000 Megohms Min.  
TEMPERATURE RATING: -55° ~ +105° C

180-MYY-20YLYYY

SERIES  
MACHINED CONTACTS  
POSITION  
15  
26  
44  
62  
GENDER  
2 = FEMALE  
TERMINATION  
0 = SOLDER CUP  
SHELL PLATING  
3 = NICKEL  
RoHS (LOW TEMP.) 230° PROCESS  
HARDWARE  
00 = Ø 0.120" HOLE  
01 = 0.098" 4-40 INSERT, BOARD SIDE  
02 = 0.250" 4-40 INSERT, BOARD SIDE  
03 = 0.250" 4-40 INSERT, MATING SIDE  
CONTACT PLATING  
1 = GOLD FLASH, ENTIRE CONTACT  
2 = 30u" GOLD, ENTIRE CONTACT

ACCEPTS 28 - 24 AWG WIRE

DO NOT SCALE FROM DRAWING

THESE DRAWINGS AND SPECIFICATIONS ARE THE PROPERTY OF NorComp AND SHALL NOT BE REPRODUCED, COPIED OR USED AS THE BASIS FOR THE MANUFACTURE OF SALE OF APPARATUS WITHOUT WRITTEN PERMISSION.

DRAWN:  
C. SMITH

CHECKED:

DATE:  
03-13-07

DATE:

NorComp

SCALE:  
1 : 1

SHEET  
1

OF  
2

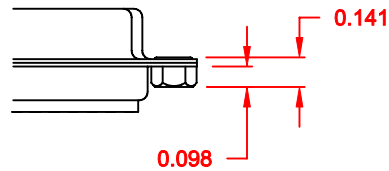
REV  
4

DWG NO.  
180-MYY-20YLYYY

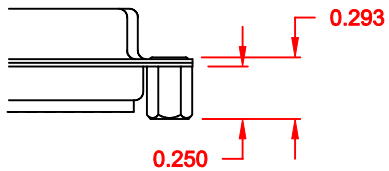
TOLERANCE:  
ALL DIMENSIONS ARE ±0.010

ALL CLINCH-NUTS ARE 4-40 INTERNAL THREADS

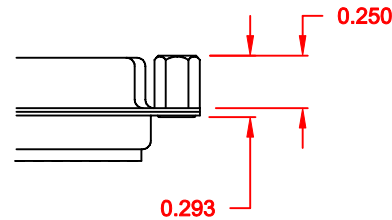
01X ..... 0.098" (BOARD SIDE) - CN1



02X ..... 0.250" (BOARD SIDE) - CN2



03X..... 0.250" (MATING SIDE) - CN8



DO NOT SCALE FROM DRAWING



THESE DRAWINGS AND SPECIFICATIONS ARE THE PROPERTY OF NorComp AND SHALL NOT BE REPRODUCED, COPIED OR USED AS THE BASIS FOR THE MANUFACTURE OF SALE OF APPARATUS WITHOUT WRITTEN PERMISSION.

DRAWN:  
C. SMITH

DATE:  
02-12-08

CHECKED:

DATE:

NorComp

SCALE: SHEET 2 OF 2 REV 4

DWG NO. 180-MYY-20YLYYY

RoHS COMPLIANT