

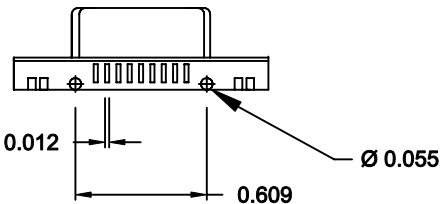
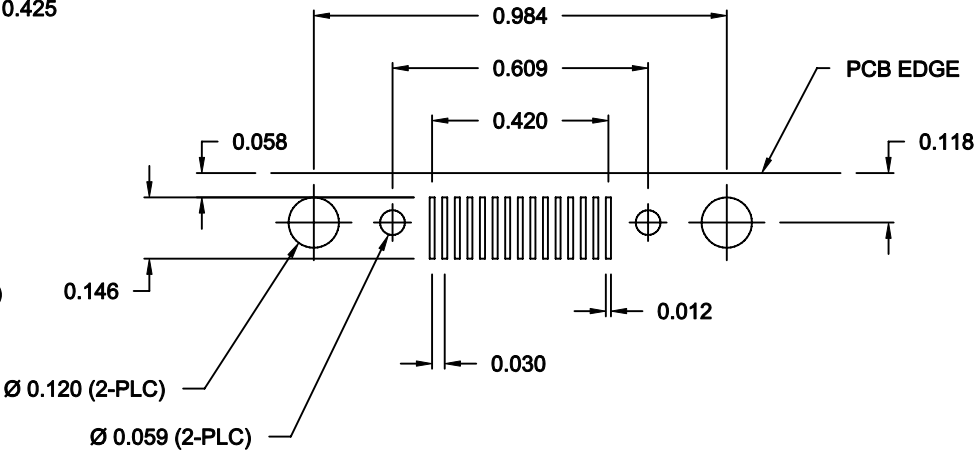
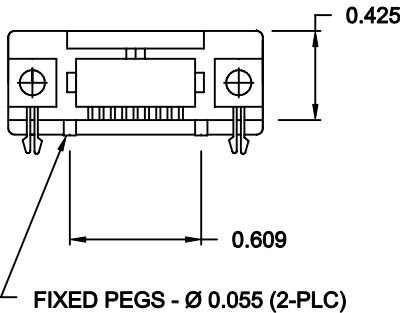
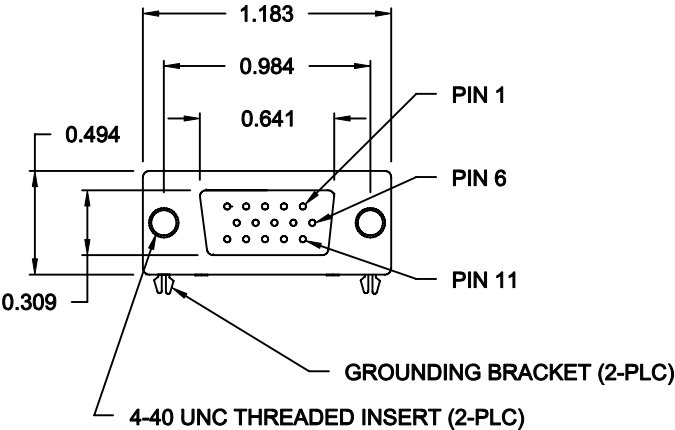
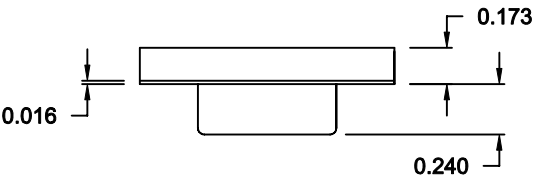
DESCRIPTION: 15 POS HIGH DENSITY FEMALE SURFACE MOUNT

MATERIAL/FINISH:

SHELL: STEEL, NICKEL PLATED
BRACKET: BRASS, NICKEL PLATED
INSULATOR: NYLON 6T-UL 94V-0, BLACK, (TEMP. RESISTANCE 250° C FOR 60 SEC.)
Pc99 COLORFUL INSULATOR: PATONE #322C
CONTACT: PHOSPHOR BRONZE, TIN PLATED
GOLD FLASH - MATING AREA
TIN - TERMINATING AREA

SPECIFICATIONS:

RATED CURRENT: 2 AMPS
RATED VOLTAGE: 300VDC
WITHSTANDING VOLTAGE: 500VAC (rms) FOR 1 MINUTE
INSULATION RESISTANCE: MORE THAN 1,000mOhms AT 500VDC
CONTACT RESISTANCE: 13mOhms Max.
DIELECTRIC STRENGTH: 1,000VAC FOR 1 MINUTE
OPERATING TEMPERATURE: -55° ~ +105° C



TOLERANCE
0.0 = ±0.010
0.00 = ±0.006
0.000 = ±0.003
ANGLES = ±1°

CONTACT ARRANGEMENT

6 11 1 7 12 2 8 13 3 9 14 4 10 15 5

RECOMMENDED PCB LAYOUT

PCB SCALE = 2 : 1

RoHS COMPLIANT



THESE DRAWINGS AND SPECIFICATIONS ARE THE PROPERTY OF NorComp AND SHALL NOT BE REPRODUCED, COPIED OR USED AS THE BASIS FOR THE MANUFACTURE OR SALE OF APPARATUS WITHOUT WRITTEN PERMISSION.

NorComp

DRAWN:
PAM JENKINS

DATE:
9-18-05

CHECKED:

DATE:

SCALE:

SHEET

OF

1

1

REV

6

DWG NO.

200-015-263R001