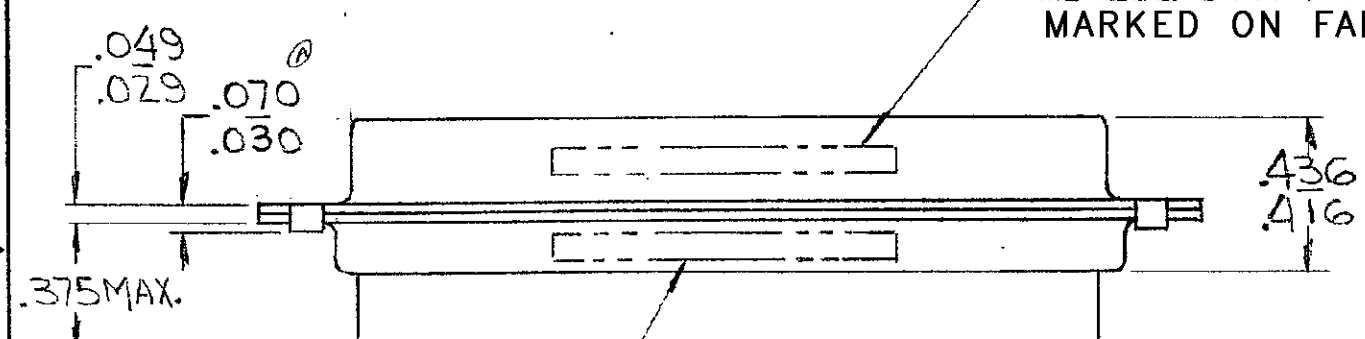
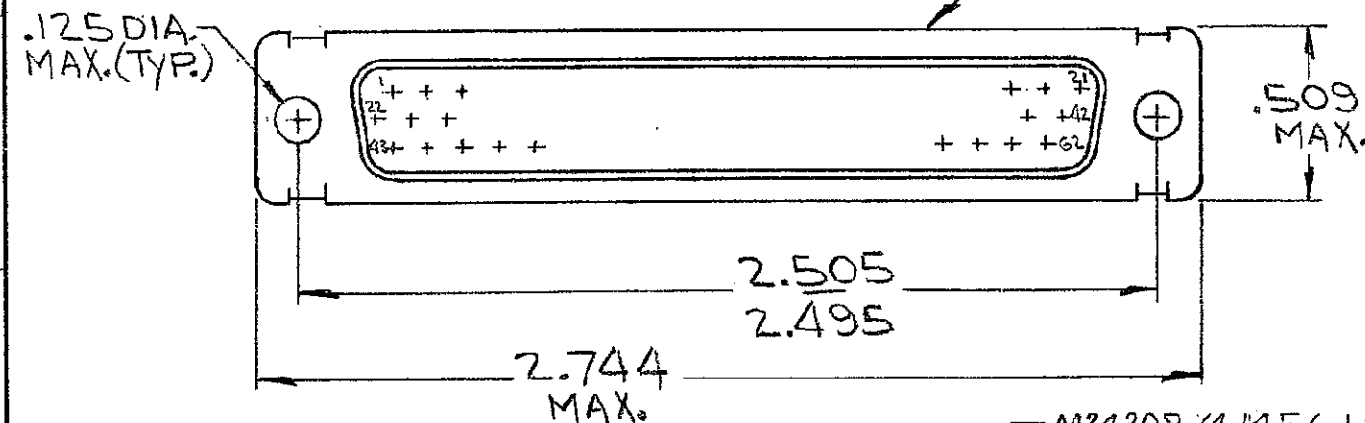


DRAWING MADE IN AMERICAN PROJECTION

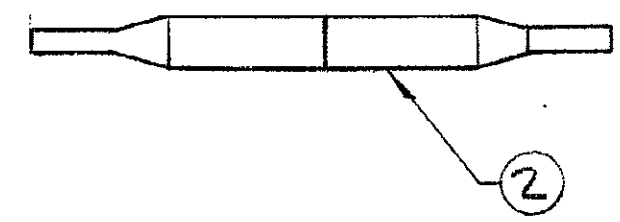
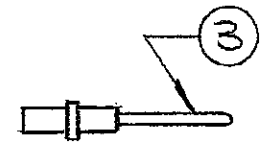
© 1970 BY AMP INCORPORATED. ALL RIGHTS RESERVED. AMP PRODUCTS COVERED BY PATENTS AND/OR PATENTS PENDING.

Unpublished copy not to be reproduced without written permission of AMP Incorporated.

REVISIONS				
ZONE	LTR	DESCRIPTION	DATE	APPROVED
	A	REV. PER ECN B-948	5-14-73	JAS
	B	ITEM 2 WAS 91054-1 ECN C-878	3/19/74	DBL
	C	REV PER ECN J-709	9-8-82	AE ONI
	D	REV R-2670, DF-0021; DF-0160, DF-0541	1-13-88	FAM
	E	REV PER DF4250	5-91	AE
	F	REV PER 0600-6676-97	7-10-98	CT
	G	ECO-08-023688	11-08	BW



M24308/4-14F (-1,-2,-3 ONLY)  
M24308/8-14F (-4,-5,-6 ONLY)  
MARKED ON FAR SIDE



MFG'S NAME, BRAND OR LOGO, MFG'S PART NO AND DATE CODE, MARKED FAR SIDE

-	X	-	-	-	-	MIL No.	M24308/8-14F	MARKED ON PACKAGE		
-	-	-	-	X	-	MIL No.	M24308/4-14F	MARKED ON PACKAGE		
X	-	-	-	-	-	MIL No.	M24308/8-20F	MARKED ON PACKAGE		
-	-	-	X	-	-	MIL No.	M24308/4-20F	MARKED ON PACKAGE		
1	1	-	-	-	-	C	204507-2	PLUG ASSY, SIZE 4 (BRASS SHELL)		4
6262	-	6262	-	-	-	B	204370-2	CONTACT, PIN - SIZE 22D		3
1	-	1	-	1	-	B	91067-1	INSERTION/EXTRACTION TOOL		2
-	-	-	1	1	1	C	204507-1	PLUG ASSY, SIZE 4 (STEEL SHELL)		1
6	5	4	3	2	1	DWG SIZE	NUMBER	NAME		ITEM No.

2 SUPSD BY 206502-9 & (62) 204370-8  
3 SUPSD BY 206502-9 & (62) 204370-8 & 91067-1

204519 204519 204519 204519 204519 204519	UNLESS OTHERWISE SPECIFIED DIMENSIONS ARE IN INCHES TOLERANCES ON: DECIMALS ± # ANGLES ± #	CONTRACT NO.	AMP INCORPORATED HARRISBURG, PENNSYLVANIA		
		DR. <i>J. J. [Signature]</i> 12/1/70	NAME KIT, "HDD" SERIES, PLUG, SIZE #4 (62 POS.)		
3 2 OBS	MATERIAL #	CHK. <i>[Signature]</i> 12-2-70	SIZE	CODE IDENT NO.	NUMBER
		APPR. <i>[Signature]</i> 12-8-70	B	00779	204519
		REL. <i>[Signature]</i> 12-9-70	REV	G	
		DSGN APPD <i>[Signature]</i>	SCALE	SHEET 1 OF 1	
		OTHER APPD	CUSTOMER DRAWING		

LOC DF  
PRINT MIST  
D DU