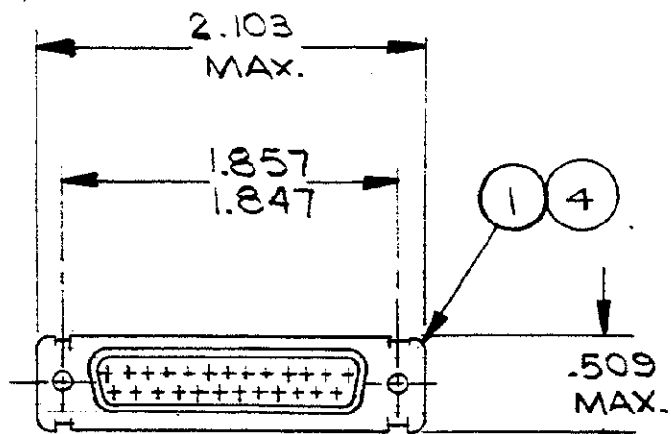


© 1971 BY AMP INCORPORATED. ALL RIGHTS RESERVED. AMP PRODUCTS COVERED BY PATENTS AND/OR PATENTS PENDING.

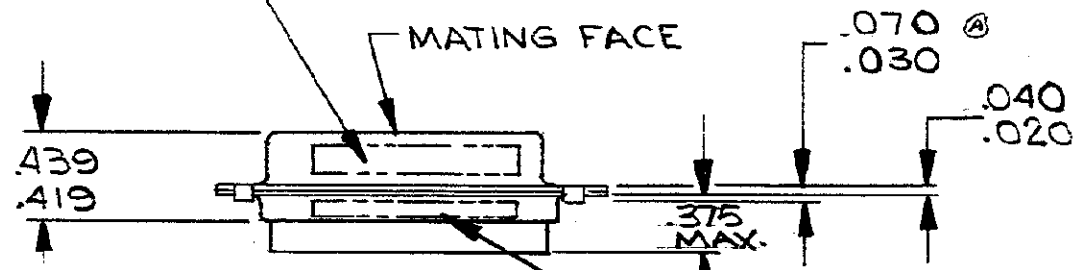
⚠ APPROPRIATE AMP P/N (KIT) IS MARKED ON PACKAGE

REVISIONS				
ZONE	LTR	DESCRIPTION	DATE	APPROVED
	0	RELEASED WAS 5066-284	6-25-71	OKS
	A	REV. PER ECN 8-774	2/5/73	ETS
	B	REV. INK STAMPING MILITARY P/N ECN D-897	9/5/75	JD
	C	ADDED -4 & -5 REV ECN J-709	9/5/82	AM 9/8
	D	REV PER R-2676; DF-0021 & DF-0160	1-82-88	EAM
	E	REV PER DF4250	5-91	AE
	F	ECO-08-023688	11-08	BW

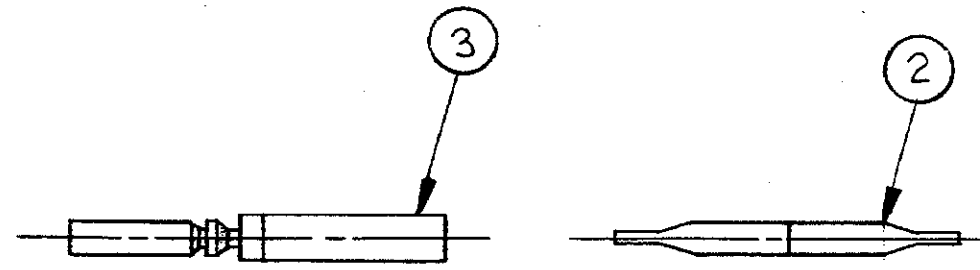
Unpublished copy not to be reproduced nor published without written permission of AMP Incorporated



M24308/2-3 F (-1-2 & -3 ONLY)
M24308/6-3F (-4 & -5 ONLY)
MARK FAR SIDE



MFG'S NAME, BRAND OR LOGO
MFG'S PART NO AND DATE CODE
MARKED FAR SIDE



SUPSD BY 206801-2 & (25) 206793-1 & 91067-2
SUPSD BY 206801-2 & (25) 206793-1
SOPSD BY 205165-1 & 91067-2

×	-	-	-	-	MIL NO M24308/6-3F MARKED ON PACKAGE		
-	×	-	-	-	MIL NO M24308/6-3F MARKED ON PACKAGE		
-	-	×	-	-	MIL NO M24308/2-3F MARKED ON PACKAGE		
1	1	-	-	-	C 205165-2 RECEPTACLE ASSY. - SIZE #3		4
-	-	-	×	-	MILITARY P/N M24308/2-3F STAMPED ON PACKAGE		
25	25	25	25	-	B 205090-1 CONTACT SOCKET SIZE 20		3
1	-	1	-	1	B 91067-2 INSERTION & EXTRACTION TOOL		2
-	-	1	1	1	C 205165-1 RECEPTACLE ASSY. - SIZE #3		1
5	4	3	2	1	DWG NUMBER		ITEM NO.

205559 205559 205559 205559 205559	UNLESS OTHERWISE SPECIFIED DIMENSIONS ARE IN INCHES TOLERANCES ON: DECIMALS = # ANGLES = #	CONTRACT NO.	AMP INCORPORATED HARRISBURG, PENNSYLVANIA	
	MATERIAL	DR <i>R.P. Matthews 6/25/71</i>		
		OTHER APPD	CHK <i>D. Baur 6/30/71</i>	NAME KIT, HDM-20 SERIES, RECPT., SIZE #3, 25 POSITION
			REL <i>N. Holladay 7/2/71</i>	SIZE B CODE IDENT NO. 00779 NUMBER 205559 REV F
SCALE #			SHEET 1 OF 1	