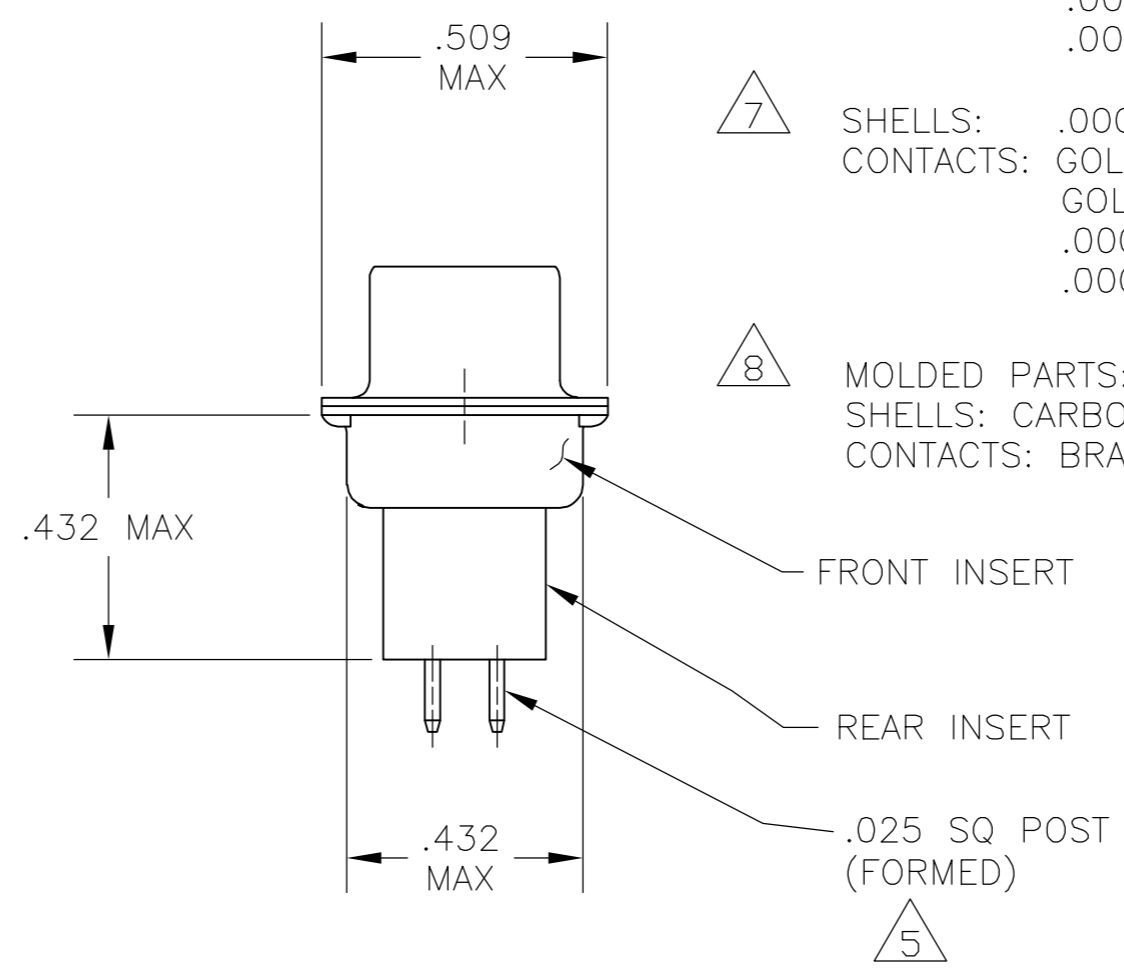
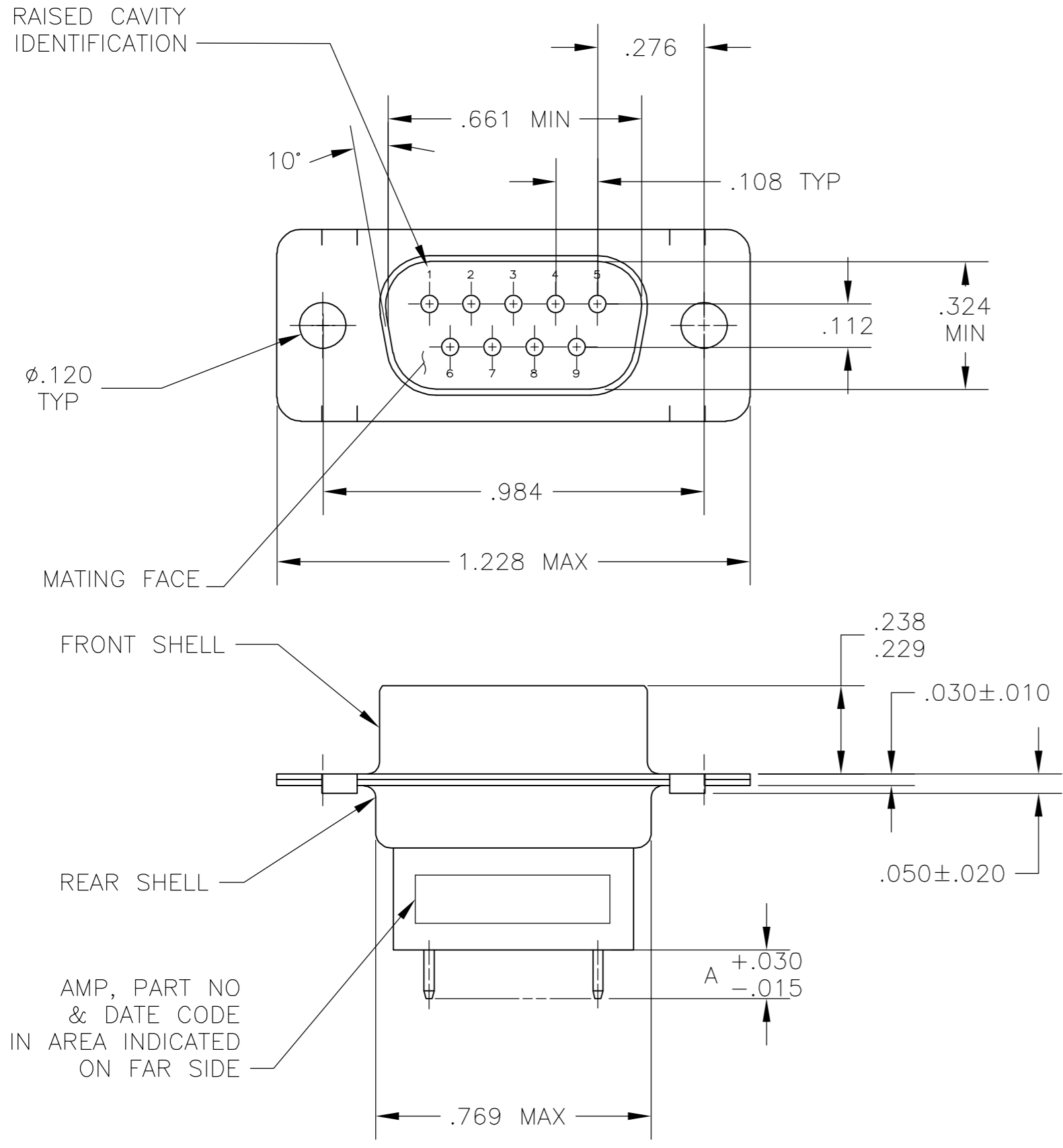


THIS DRAWING IS UNPUBLISHED. RELEASED FOR PUBLICATION  
 © COPYRIGHT 2005 BY TYCO ELECTRONICS CORPORATION. ALL RIGHTS RESERVED.

LOC		DIST		REVISIONS			
P	LTR	DESCRIPTION		DATE	DWN	APVD	
GP	00	W	REVISED PER ECO-06-024575		24JAN07	JDP	EDB



1. THIS PLUG ACCEPTS SIZE 20 PIN CONTACTS PER AMP DWG 66481.
  2. RETENTION TINES ARE AN INTEGRAL PART OF INSERT.
  3. FOR MATING PART SEE DWG 205734.
  4. THIS PLUG COMPLIES WITH AMP SPEC 108-10020 WHERE APPLICABLE.
- 5 POST TIPS FALL WITHIN .020 DIA TRUE POSITION OF EACH OTHER.
- 6 SHELLS: .000200 MIN ZINC WITH YELLOW CHROMATE COATING.  
 CONTACTS: .000030 MIN GOLD ON MATING END,  
 .000100 MIN TIN-LEAD ON SOLDER END, BOTH OVER  
 .000050 MIN NICKEL.  
 OR  
 GOLD FLASH OVER  
 .000030 MIN PALLADIUM NICKEL ON MATING END,  
 .000100 MIN TIN-LEAD ON SOLDER END, BOTH OVER  
 .000050 MIN NICKEL.
- 7 SHELLS: .000200 MIN ZINC WITH YELLOW CHROMATE COATING.  
 CONTACTS: GOLD PLATED FOR LENGTH OF .150 MIN FROM MATING END,  
 GOLD FLASH IN MATED AREA,  
 .000100 MIN TIN-LEAD ON SOLDER END, ALL OVER  
 .000050 MIN NICKEL.
- 8 MOLDED PARTS: GLASS-FILLED NYLON, UL 94V-0 RATED, BLACK.  
 SHELLS: CARBON STEEL  
 CONTACTS: BRASS

SUPSD BY 205733-7	7	.188	205733-8
	6	.188	205733-7
SUPSD BY 745410-5	7	.651	205733-6
SUPSD BY 745410-5	6	.651	205733-5
SUPSD BY 205733-3	7	.427	205733-4
SUPSD BY 745410-1	6	.427	205733-3
SUPSD BY 205733-1	7	.125	205733-2
	6	.125	205733-1
CONTACT FINISH		A	PART NUMBER

THIS DRAWING IS A CONTROLLED DOCUMENT.		DWN J. POLIGNONE 01FEB07	Tyco Electronics Corporation Harrisburg, Pa 17105-3608	
DIMENSIONS: INCHES		CHK E. BRIANT 01FEB07		
TOLERANCES UNLESS OTHERWISE SPECIFIED:		APVD E. BRIANT 01FEB07	NAME PLUG ASSEMBLY, SIZE 1, 9 POSN, VERTICAL AMPLIMITE HDP	
0 PLC ± -		PRODUCT SPEC 108-40025	SIZE A2	
1 PLC ± -		APPLICATION SPEC	CAGE CODE 00779	
2 PLC ± -			DRAWING NO C=205733	
3 PLC ± .005			RESTRICTED TO	
4 PLC ± -			SCALE 3:1	
ANGLES ± -			SHEET 1 OF 1	
FINISH		WEIGHT -	REV W	
MATERIAL		CUSTOMER DRAWING		