

H G F E D C B A

ELECTRICAL DATA

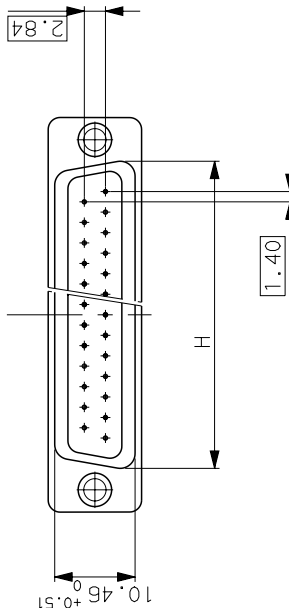
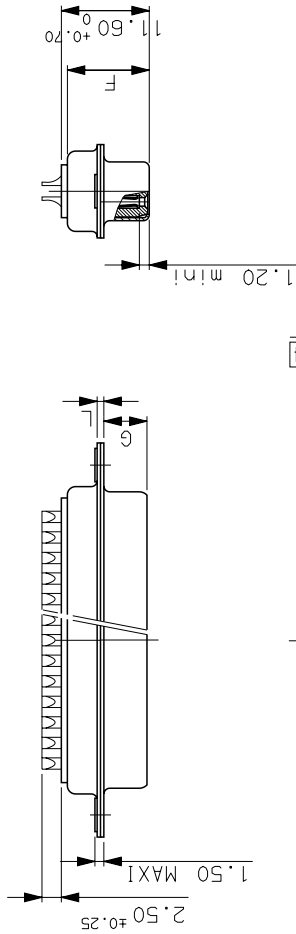
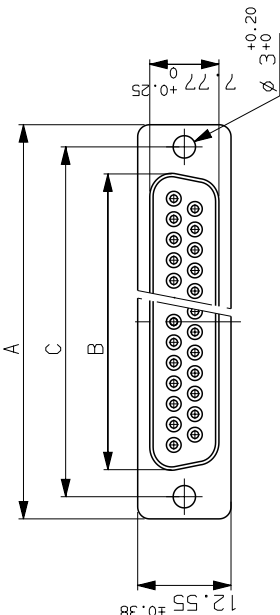
- I max
- Contact resistance
- Insulation resistance
- TEST VOLTAGE
- contact/contact
- contact/ground

MECHANICAL DATA

- Contact force
- Retention force
- Insertion force
- Withdrawal force
- Mechanical endurance
- Material shell
- Material insulator
- Material contacts
- Finish on contact area
- Finish on termination end
- Solderability
- Shock
- Vibration

ENVIRONMENTAL DATA

- Climatic category
- Corrosion



Core range		A	B	C	F	G	H	L	PART NUMBER
Shell size	Number of contacts	A	B	C	F	G	H	L	
E	09	30.43	16.21	24.99	10.64	6.05	19.02	0.80	DE09S064T
A	15	38.76	24.54	33.32	10.64	6.05	27.25	0.80	DA15S064T
B	25	52.65	38.25	47.04	10.64	6.05	41.02	0.80	DB25S064T

Dimensions are in millimeters

c	17/04/03	removal part number	--
ISS	DATE	Latest modification by : BART.S	MOD N°
Designed by: JOUBERT date:15/01/97 Type of drawing: CLIENT			
TITLE : SOCKET CONNECTORS D SUBMINIATURE			
WITH SOLDER CONTACT			
SCALE: 1.5			SHEET 1/1
		FRAMATOME CONNECTORS FRANCE Rue Louis Breguet - Bp 05 72024 LE MANS Cedex Tel. 33 (16) 43.84.08.43	
FORMAT		SOURIAU DRG N°	
A3	C01-8636-1024-1		PROJECT M94D001

This document is the property of
FRAMATOME CONNECTORS FRANCE
It must not be reproduced or
communicated without permission in
writing from the owners