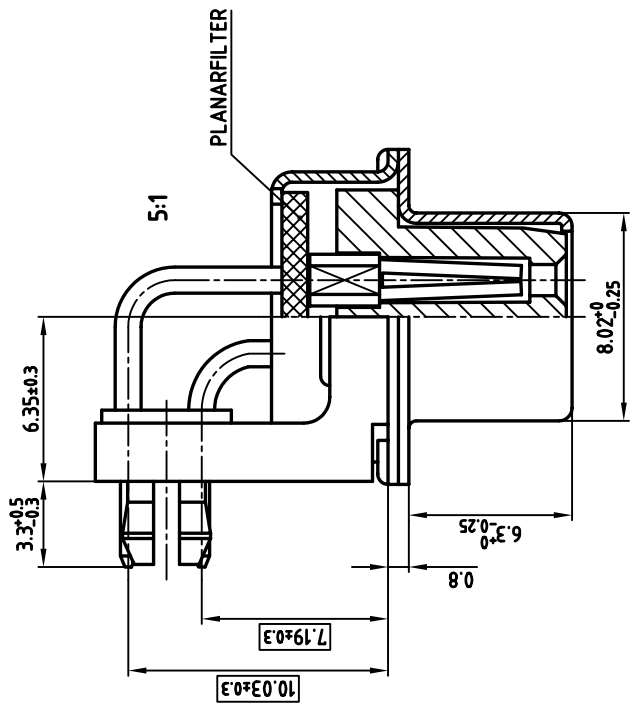
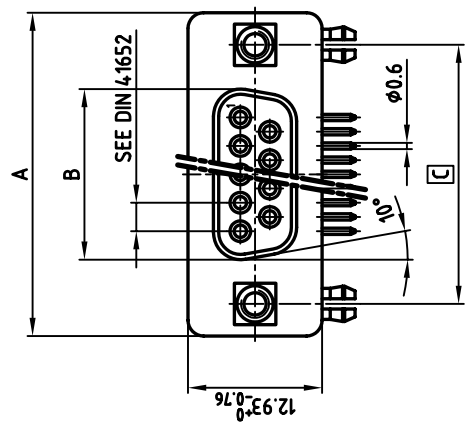
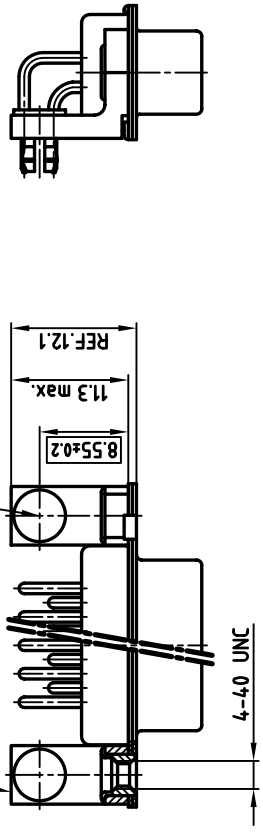


used for: D-SUB FILTER



PRESS FOR FIXING ON PCB

METAL BRACKET



NOTES:

1. METALSHELLS/-BRACKETS: STEEL; TIN PLATED
2. INSULATORS: PPTP GF UL 94 V-0
3. CONTACTS: COPPER ALLOY
4. PLATING: HARD GOLD OVER NICKEL
5. PCB-SNAP: COPPER ALLOY; TIN PLATED
PCB-HOLE: $\phi 3.1 \pm 0.1$
PCB THICKNESS 1.6mm
6. CAPACITANCE: 1300pF $\pm 20\%$
7. = CRITICAL DIMENSION: SPC



tolerance		scale: 2:1 (5:1)		material: SEE NOTES	
1997	date	name	title:	D-SUB FEMALE 90°	
drawn	04.11.	Barcinski		0.318inch 9-37pos.	
appd.	04.11.	Mickenbecker		with threaded insert, metal bracket and clip	
norm		DIN 41652		[CAD/ REL.13] DIN-A	
rev.				dwg no: 24K11W0A	
				sh: 1/1	
rev. description			date		
name			product no: SEE TABLE		

THIS DRAWING MAY NOT BE COPIED OR REPRODUCED IN ANY WAY, AND MAY NOT BE PASSED ON TO A THIRD PARTY WITHOUT WRITTEN PERMISSION.
OWNERSHIP AND COPYRIGHT OF CONEC GMBH DO NOT ALTER CAD DRAWING BY HAND

POS.	A -0.76	B -0.25	C	PART-NO.
9	31.19	16.46	25.00 ^{+0.12} _{-0.13}	242A17660X
15	39.52	24.79	33.30 ^{+0.15} _{-0.1}	242A17670X
25	53.42	38.50	47.04 ^{+0.13}	242A17680X
37	69.70	54.96	63.50 ^{+0.13}	242A17690X