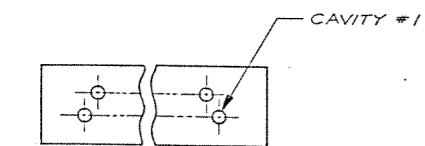
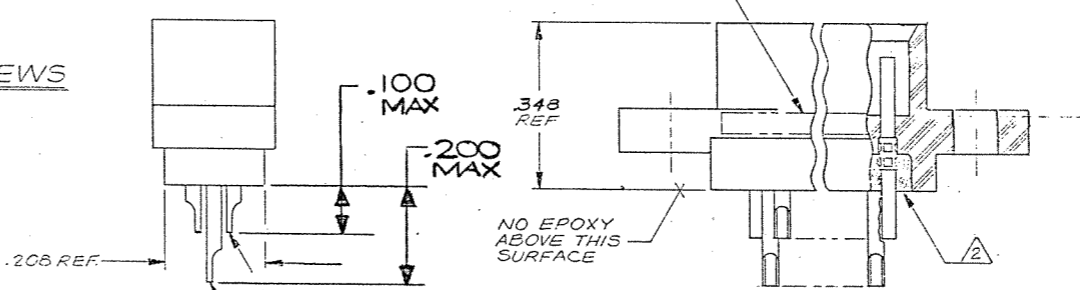
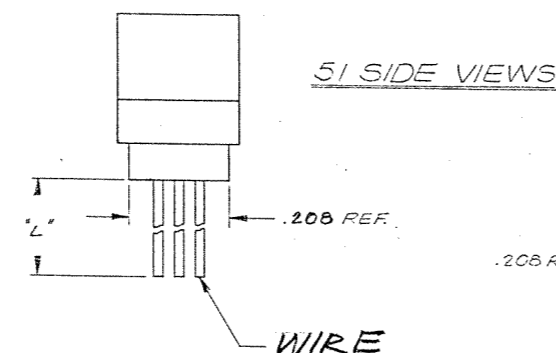
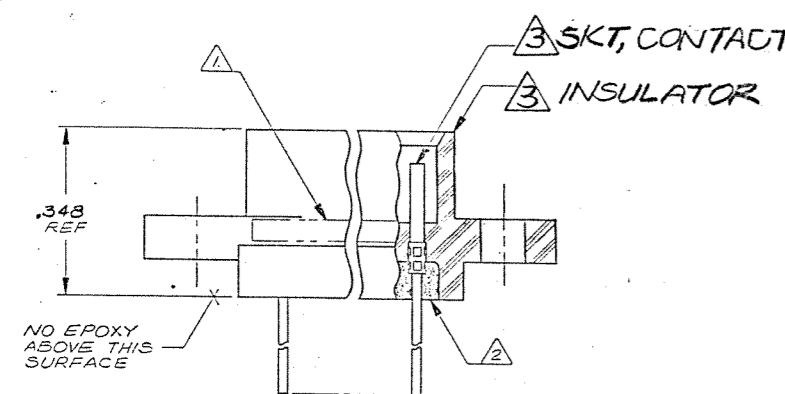
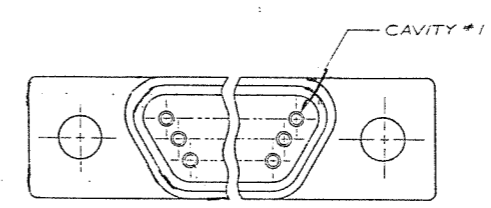
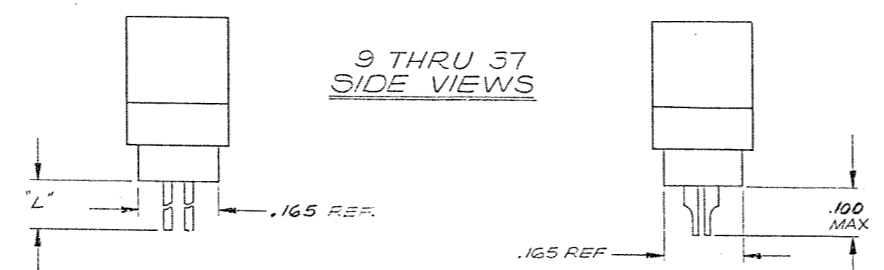
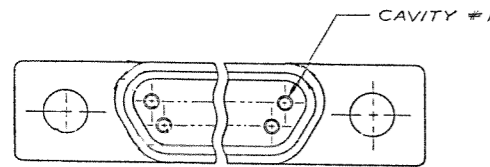


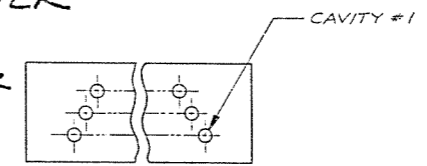
8 7 6 5 4 3 2 1

REVISIONS					
ZONE	LTR	ECN	DESCRIPTION	DATE	APPROVED
B		27054	NEW RELEASE	1/5/93	[Signature]

C Combine M & CD Dwg



9 THRU 37 CONFIGURATION



51 CONFIGURATION

(SHOW WITH SOLDER POT TERMINATIONS FOR REFERENCE ONLY. WIRE TERMINATIONS ARE THE SAME CONFIGURATION)

NOTES: UNLESS OTHERWISE SPECIFIED

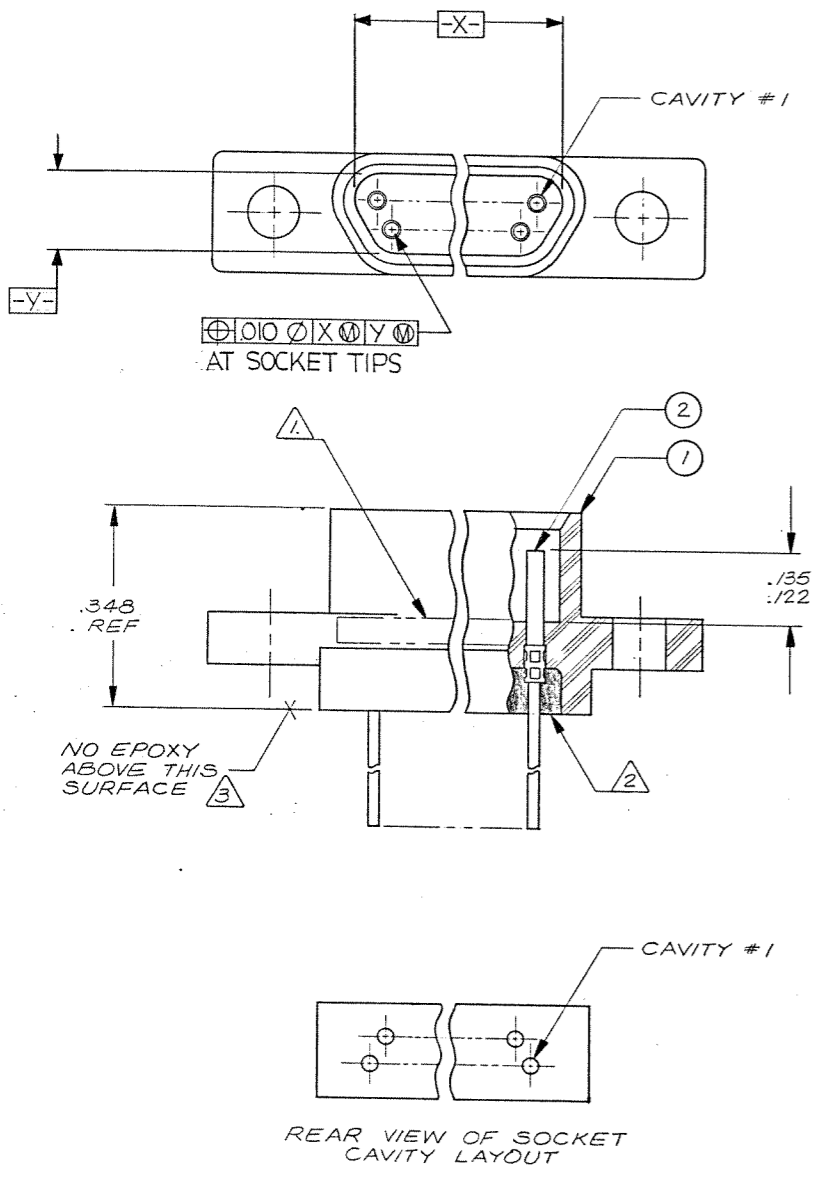
- 1 MARK "MALCO" OR MALCO LOGO, MILITARY PART NO. (e.g. M53513/07-*) CODE IDENT. NO. & DATE CODE WITH .041 MIN HIGH CHARACTERS IN APPROXIMATE LOCATION SHOWN.
- 2 EPOXY USING HYSOL # 4215 & 3561.

- 3 SOLDER POT: MATL: BRASS PER QQ-B-626, COMP 360, 1/2 HARD FINISH: COPPER ALLOY/GOLD PLATED
- SKT. CONTACT: MATL: COPPER ALLOY/GOLD PLATED
- HOUSING: MATL: (R3) POLYPHENYLENE SULFIDE RYTON RA-04 (BR-68) PER MIL-M-24519, COLOR BROWN.

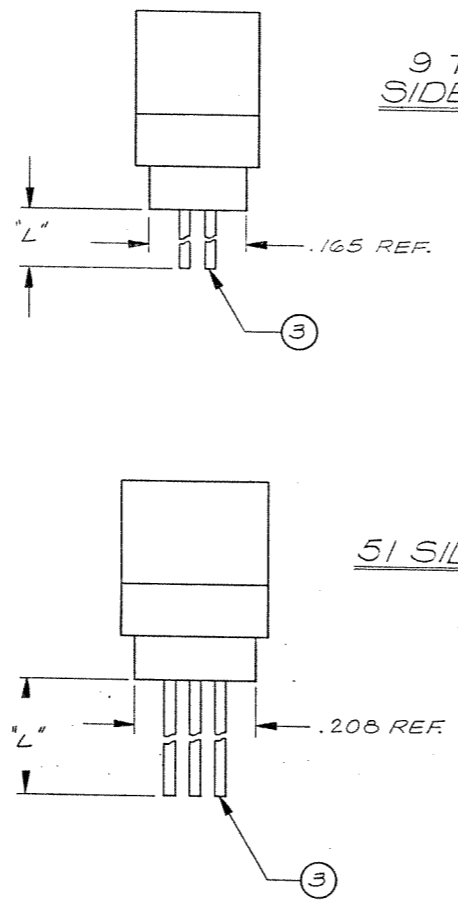
Tyco Customer Drawing 1-1532149-5

QTY REQD	CODE IDENT	PART OR IDENTIFYING NO.	NOMENCLATURE OR DESCRIPTION
PARTS LIST			
UNLESS OTHERWISE SPECIFIED DIMENSIONS ARE IN INCHES TOLERANCES ARE: FRACTIONS DECIMALS ANGLES ± .XX ± ± ± .XXX ± ±		CONTRACT NO.	MALCO A MICRODOT COMPANY, INC. 306 PASADENA AVE., SO. PASADENA, CALIF. 91030
MATERIAL		APPROVALS	DATE
FINISH		CHECKED	1/5/93
NEXT ASSY USED ON		PR. ENG.	7-5-92
APPLICATION		APP'D.	
DO NOT SCALE DRAWING		PROD CODE 824 CODE CD SIZE CODE IDENT NO. DRAWING NO. D 98278 095-0000-0446	
SCALE NONE		SHEET / OF /	

8 7 6 5 4 3 2 1

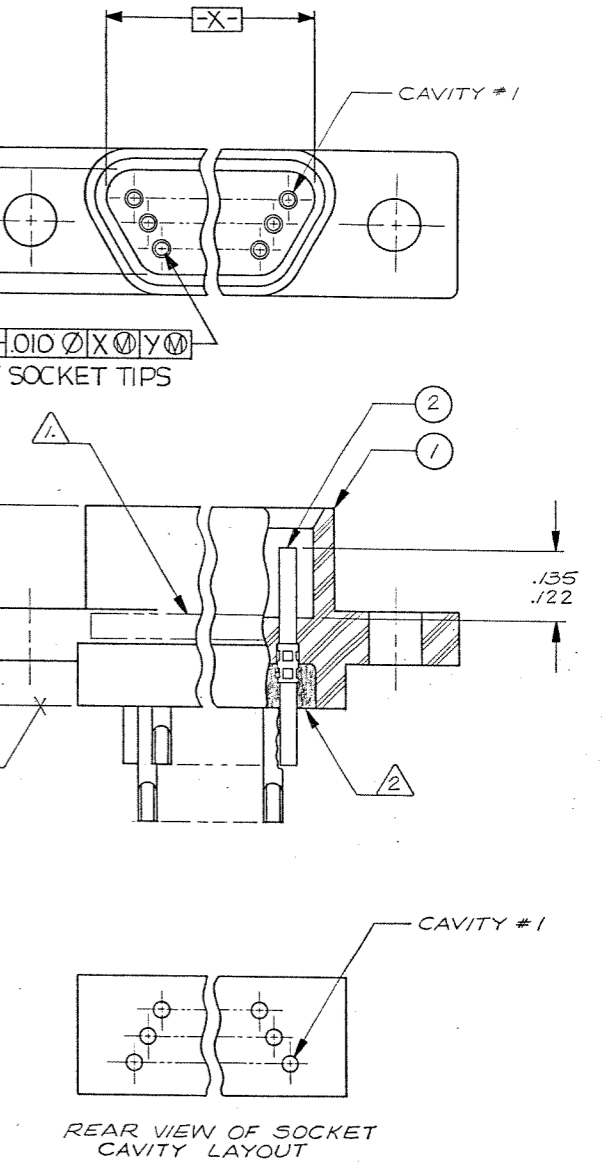
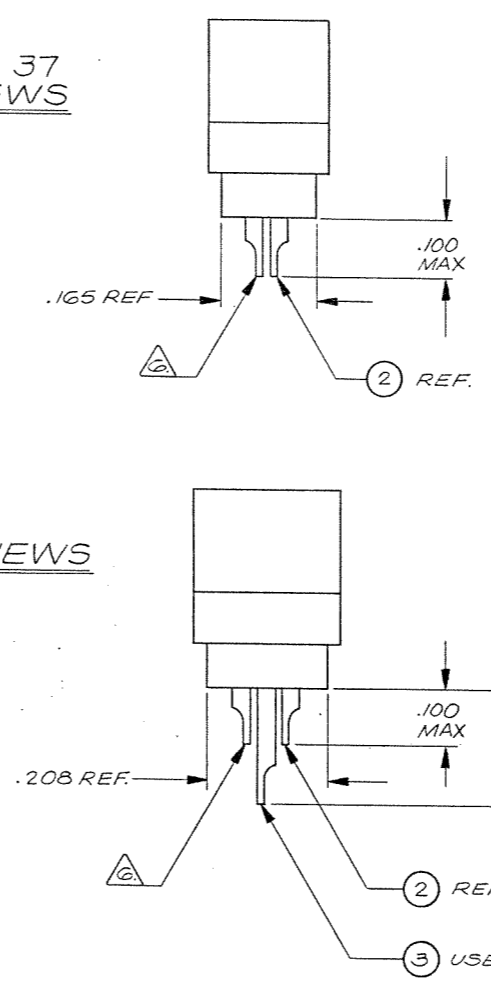


9 THRU 37 CONFIGURATION



51 CONFIGURATION

- NOTES: UNLESS OTHERWISE SPECIFIED
- 1. MARK "MALCO" OR MALCO LOGO, MILITARY PART NO. (e.g. M83513/07-*), CODE IDENT. NO., & DATE CODE WITH .047 MIN HIGH CHARACTERS IN APPROXIMATE LOCATION SHOWN.
 - 2. EPOXY USING HYSOL # 4215 & 3561.
 - 3. EPOXY WICKING - UNINSULATED WIRE .050 MAX. INSULATED WIRE UP TO # 25 AWG .125 MAX. INSULATED WIRE # 24 AWG OR LARGER .200 MAX.
 - 4. CRIMP LEADS OR SOLDER POTS INTO CONTACTS PER MEP 302-05.
 - 5. NO SCRATCHES SHOWING BASE METAL PERMITTED ON SOLDER POTS.
 - 6. CHAMFER ON SOLDER POTS ARE TO BE PARALLEL WITH SIDES OF CONNECTOR WITHIN 10 DEGREES.



51 CONFIGURATION

(SHOW WITH SOLDER POT TERMINATIONS FOR REFERENCE ONLY. WIRE TERMINATIONS ARE THE SAME CONFIGURATION)

Tyco Customer Drawing 1-1532149-5

QTY REQD	CODE IDENT	PART OR IDENTIFYING NO.	NOMENCLATURE OR DESCRIPTION
PARTS LIST			
UNLESS OTHERWISE SPECIFIED DIMENSIONS ARE IN INCHES TOLERANCES ARE:		CONTRACT NO.	
FRACTIONS	DECIMALS	ANGLES	
±	.XX ±	±	
	.XXX ±		
MATERIAL		APPROVALS	DATE
		DRAWN G. SAUER	5-17-82
		CHECKED [Signature]	5-18-82
		PR. ENG. [Signature]	5-18-82
		APPD.	
FINISH		MALCO A MICRODOT COMPANY, INC. 306 PASADENA AVE., SO. PASADENA, CALIF. 91030 RACK & PANEL CONNECTOR, RCPT. MCD PER MIL-C-83513	
NEXT ASSY USED ON		SIZE	CODE IDENT NO. DRAWING NO.
APPLICATION		D	98278 095-0000-0446
DO NOT SCALE DRAWING		SCALE	NONE
		SHEET / OF /	