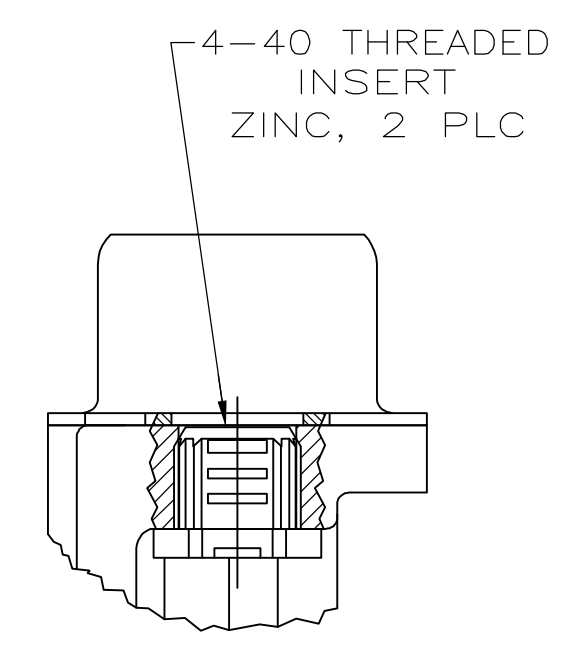
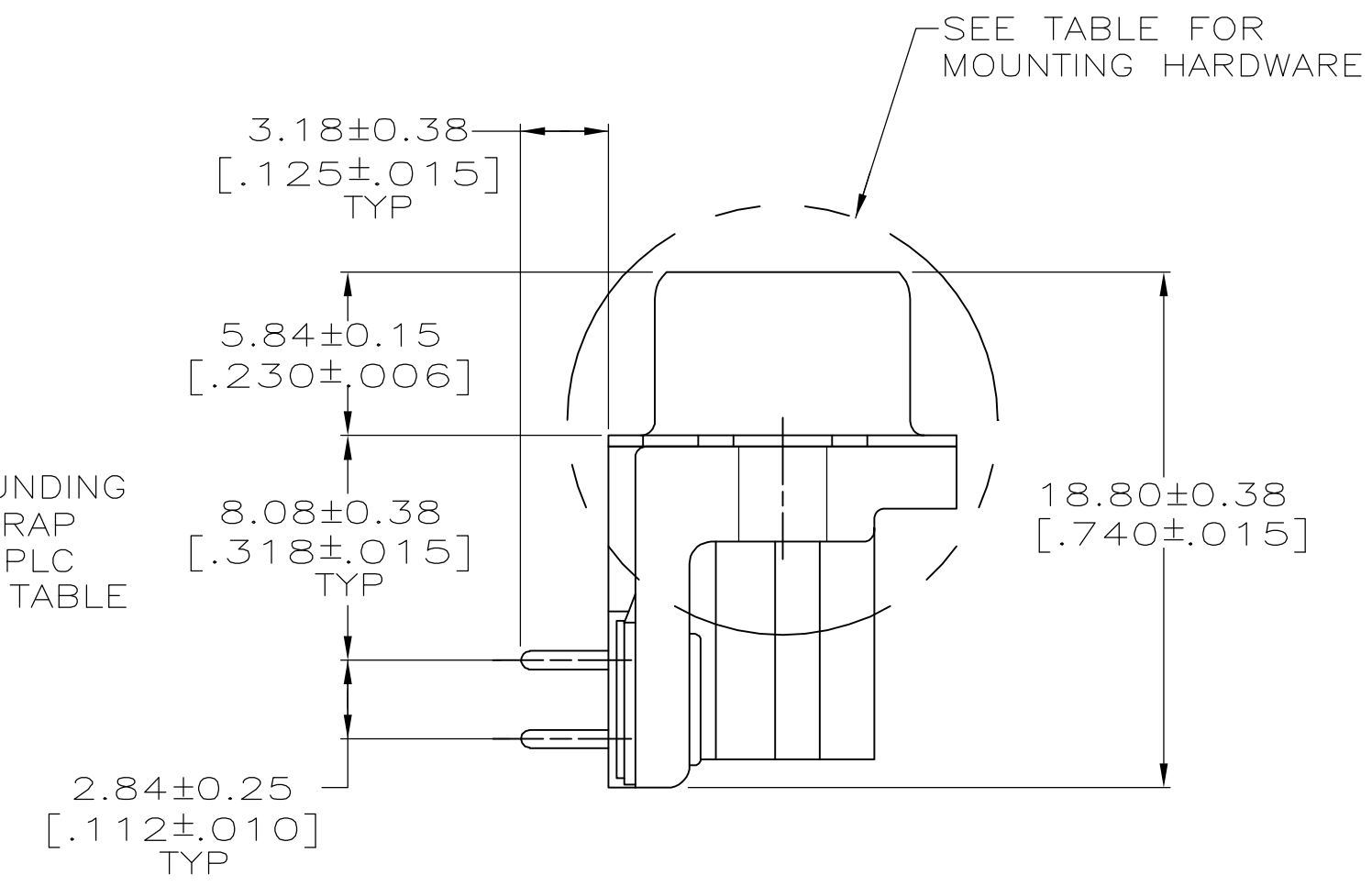
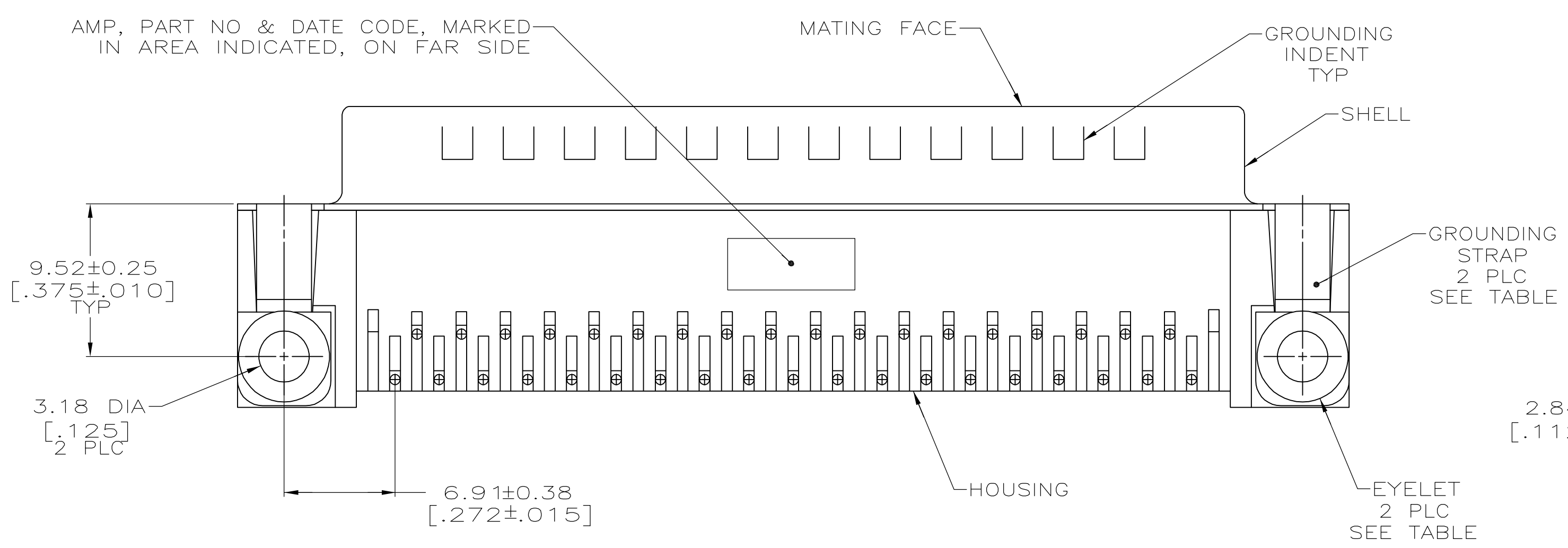
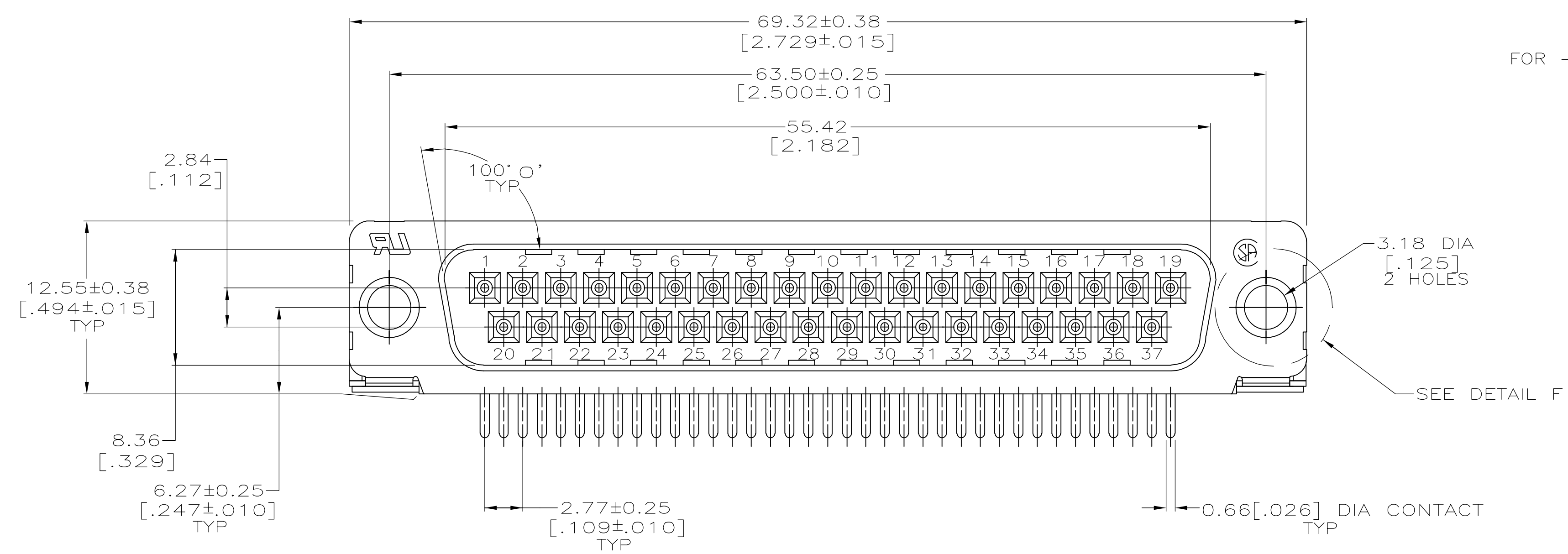


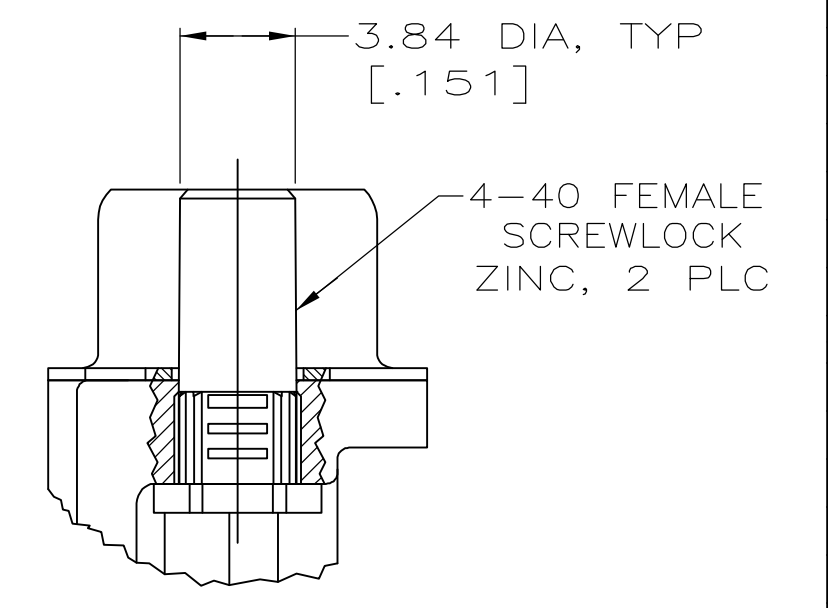
FOR -5, -6, -11 AND -12 ONLY

DETAIL F
2 PLC

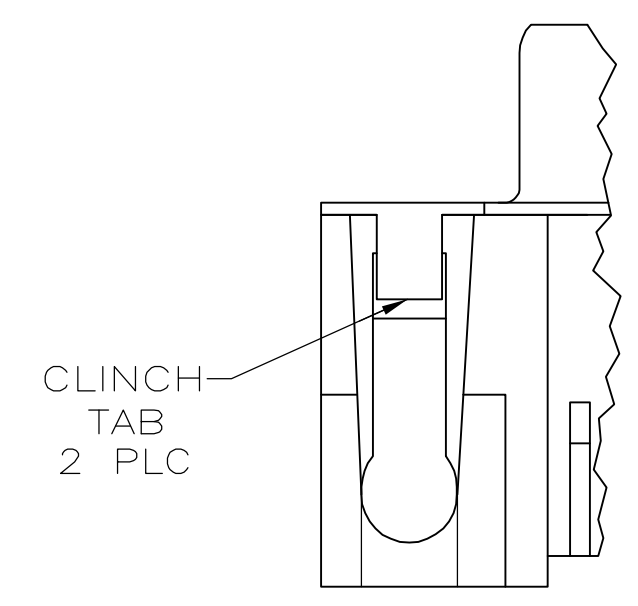
- ① HOUSING: BLACK NYLON OR POLYESTER, FLAME RETARDANT, UL 94V-0 RATED, GLASS FILLED
CONTACTS: BRASS
SHELLS: CARBON STEEL
EYELETS: BRASS
- ② SHELLS: 2.54μm [.000100] MIN TIN OVER 1.27μm [.000050] MIN COPPER
EYELETS: 5.08μm [.000200] MIN TIN OVER COPPER FLASH
CONTACTS: SEE TABLE
SCREWLOCK AND INSERT: CLEAR CHROMATE
- ③ GOLD FLASH FOR LENGTH OF 3.81 [.150] MIN FROM MATING END, 2.54μm [.000100] MIN TIN OR TIN-LEAD FOR A LENGTH OF 3.56 [.140] MIN FROM OPPOSITE END, BOTH OVER 1.27μm [.000050] MIN NICKEL.
- ④ GOLD PLATED FOR LENGTH OF 3.81 [.150] MIN FROM MATING END, 0.76μm [.000030] MIN GOLD IN MATED AREA, 2.54μm [.000100] MIN TIN OR TIN-LEAD FOR A LENGTH OF 3.56 [.140] MIN FROM OPPOSITE END, BOTH OVER 1.27μm [.000050] MIN NICKEL.
-OR-
GOLD FLASH OVER MIN PALLADIUM NICKEL FOR A LENGTH OF 3.81 [.150] MIN FROM MATING END, 0.76μm [.000030] PALLADIUM NICKEL IN MATED AREA, 2.54μm [.000100] MIN TIN OR TIN-LEAD FOR A LENGTH OF 3.56 [.140] FROM OPPOSITE END, BOTH OVER 1.27μm [.000050] MIN NICKEL.
- ⑤ OBSOLETE PART NUMBER.
- ⑥ SUPERSEDED BY 747252-4.
- ⑦ SUPERSEDED BY 747252-6.
- ⑧ SUPERSEDED BY 747843-6.



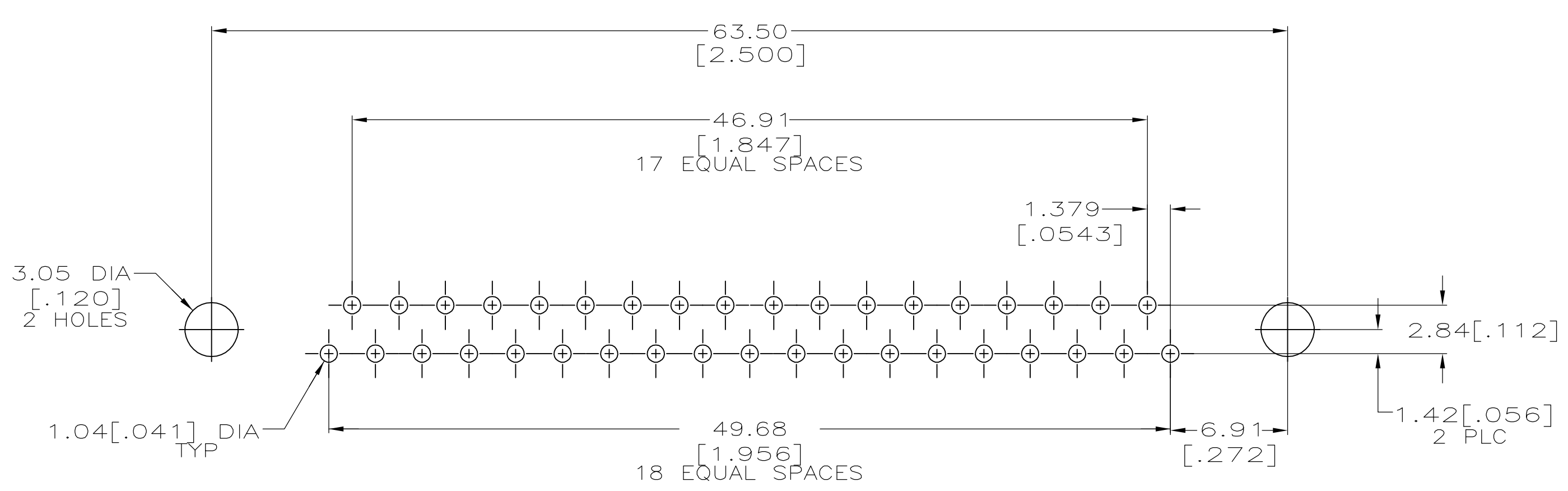
DETAIL D



DETAIL E



DETAIL B



RECOMMENDED P.C. BOARD MOUNTING DIMENSIONS

NO SEE DETAIL B	NO	SEE DETAIL E	④	④	1-747252-2
		SEE DETAIL D	④	④	1-747252-1
YES	YES	-	④	④	1-747252-0
		-	④	④	747252-9
		SEE DETAIL E	④	④	747252-8
		SEE DETAIL D	④	④	747252-7
GROUNDING STRAPS	EYELETS	SEE DETAIL E	④	④	747252-6
		SEE DETAIL D	④	④	747252-5
		-	④	④	747252-4
		-	④	④	747252-3
		CONTACT FINISH	④	④	747252-2
		PART NUMBER	④	④	747252-1

THIS DRAWING IS A CONTROLLED DOCUMENT. DWG: W.G. LENKER 07-NOV-89. CHK: R. STONE 05-FEB-90. APVD: W.D. GALLOWAY 06-FEB-90. NAME: Tyco Electronics Corporation, Harrisburg, PA 17105-3608.

DIMENSIONS: mm [INCHES]	TOLERANCES UNLESS OTHERWISE SPECIFIED:	PRODUCT SPEC: 108-40025	APPLICATION SPEC: 114-40010	SIZE: A1	SCALE: 4:1	SHEET: 1 of 1	REV: S
0 PLC ± -	1 PLC ± -	2 PLC ± -	3 PLC ± 0.13[.005]	4 PLC ± -	ANGLES ± 2°	FINISH	RESTRICTED TO
MATERIAL		WEIGHT		CUSTOMER DRAWING		DRAWING NO: 00779	

PLUG ASSEMBLY, SIZE 4, 37 POSITION, RIGHT ANGLE, FRONT METAL SHELL, .318 SERIES, AMPLIMITE H8-20