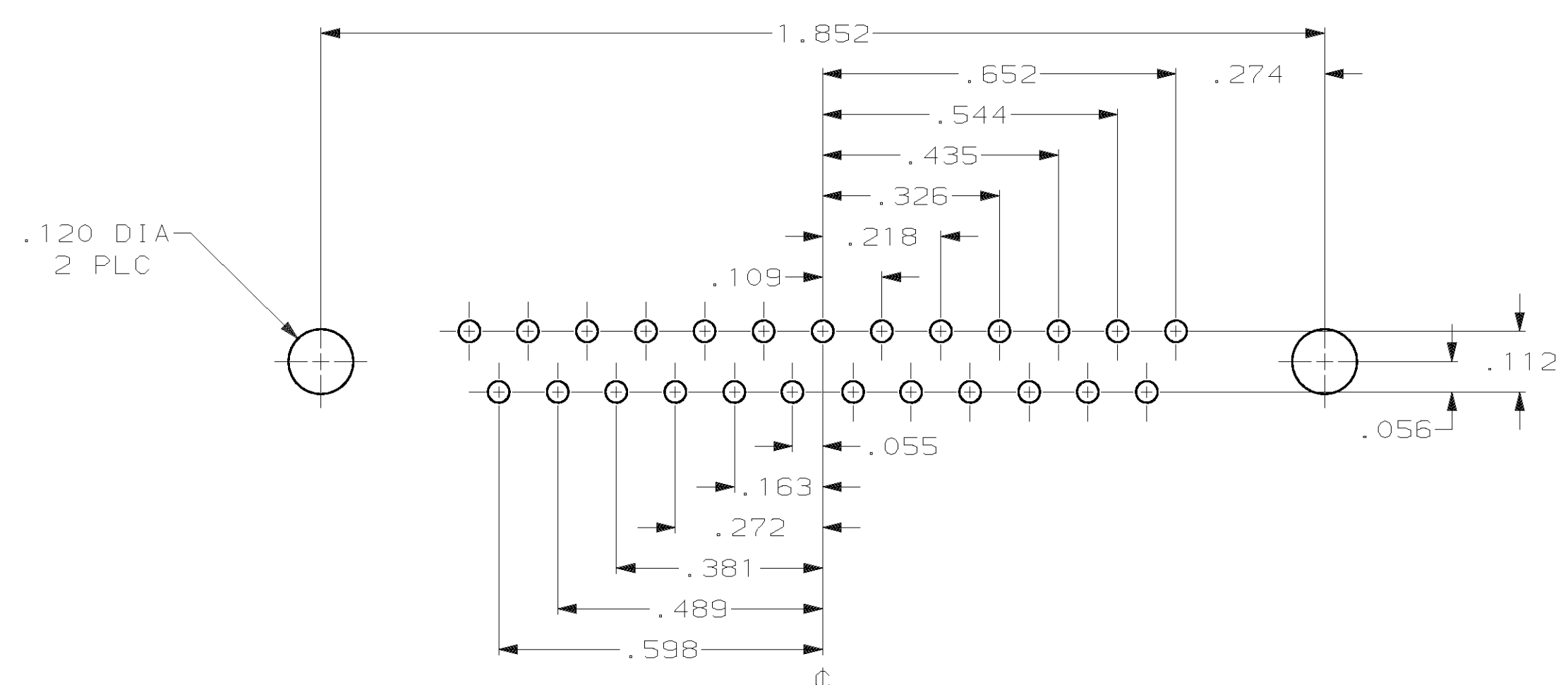
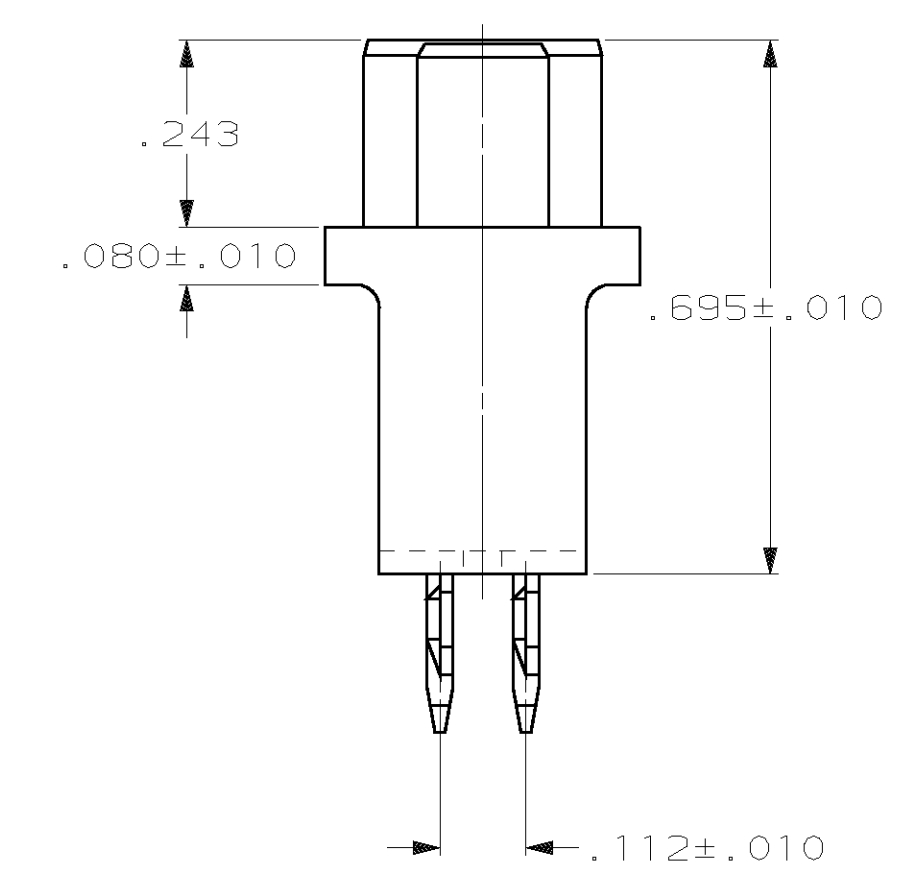
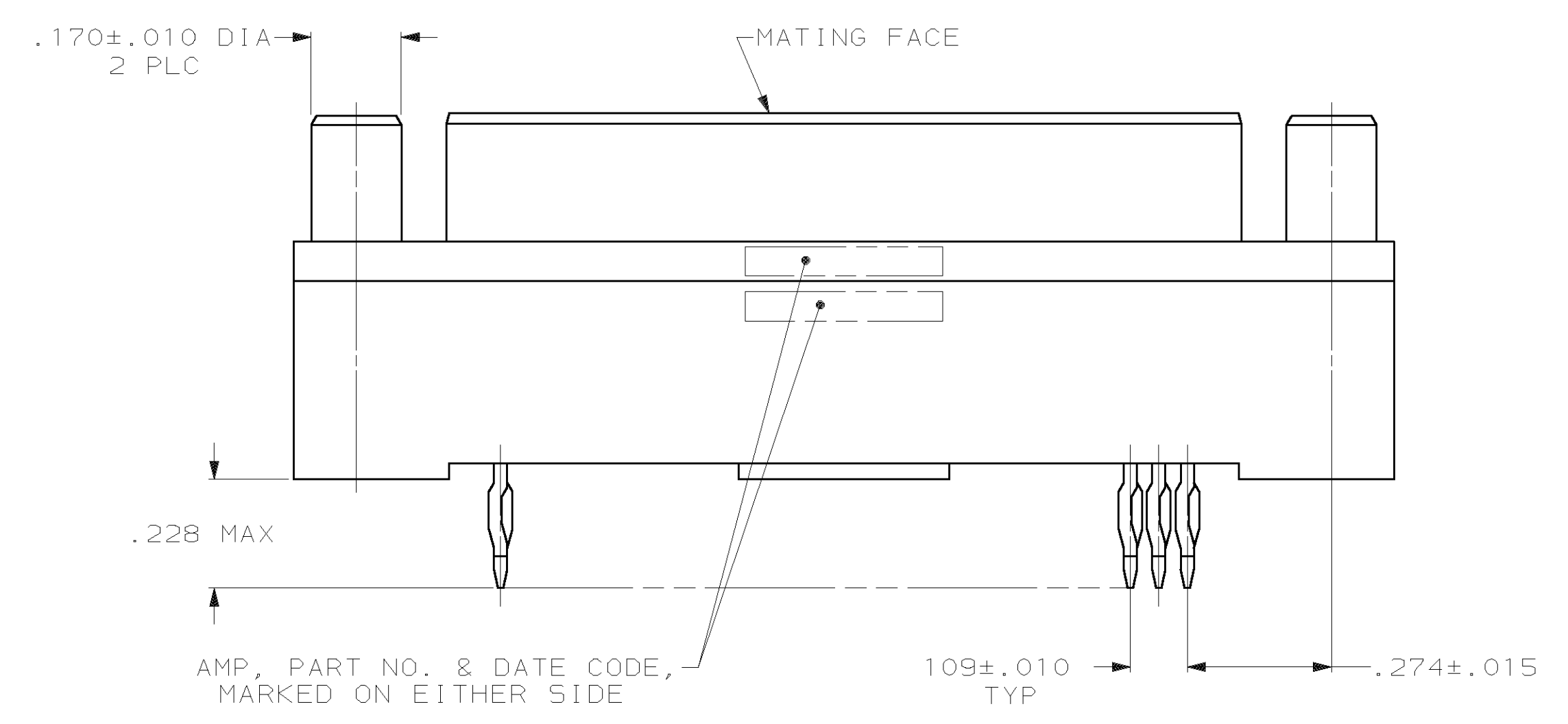
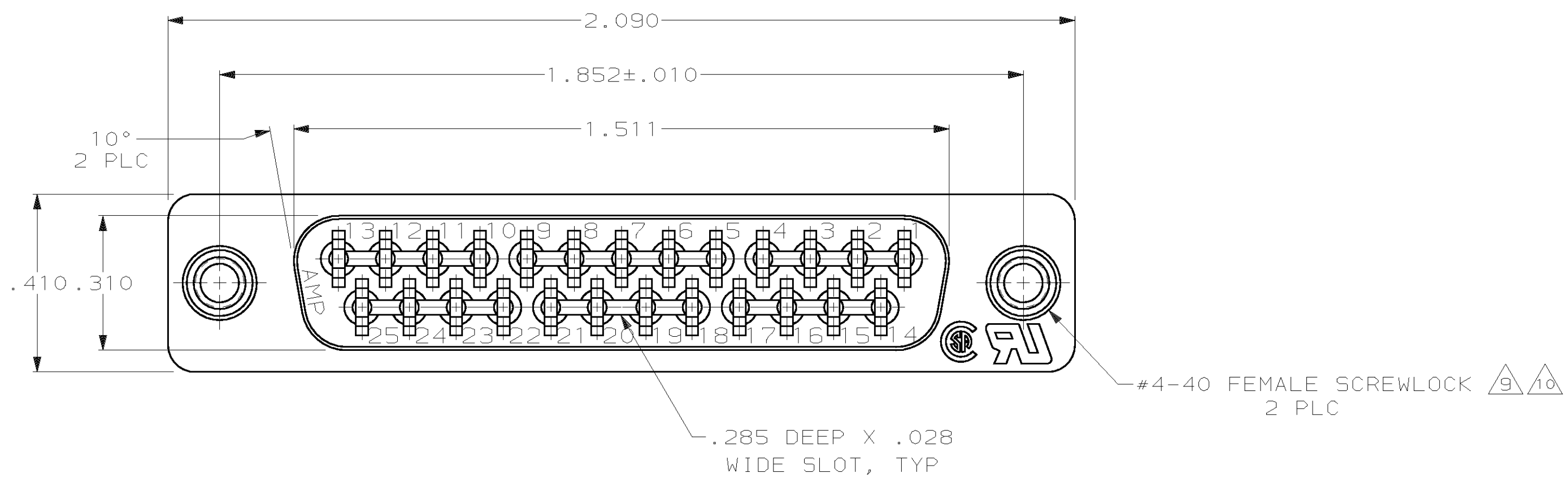


LOC		DIST		P		F		ZONE		LTR		REVISIONS	
												DESCRIPTION	
												DATE	
												APPD	
GP	00												REVISED PER EC OUE0-0045-01
													08NOV01
													JG



P.C. BOARD MOUNTING DIMENSIONS $\Delta 1$

- $\Delta 1$ P.C. BOARD RECOMMENDATIONS:
 A. HOLES SHOULD BE DRILLED WITH A 1.15 MM DRILL.
 B. MINIMUM P.C.B. TIN-LEAD PLATING TO BE .000300 THICK OVER .002±.001 THICK COPPER.
 C. RECOMMENDED HOLE SIZE AFTER TIN-LEAD PLATING IS .037 TO .043 DIA.
 D. IF HOLE IS REFLOWED AFTER PLATING, DIA TO BE .036 TO .043.
- $\Delta 2$ FLAME RETARDANT, 94V-0 RATED, GLASS FILLED, NYLON OR POLYESTER, COLOR: BLACK.
- $\Delta 3$ COPPER ALLOY PER ASTM B 122.
- $\Delta 4$ BRASS PER ASTM B 16.
- $\Delta 5$ GOLD PLATING PER MIL-G-45204, NICKEL PLATING PER QQ-N-290, TIN PLATING PER MIL-T-10727.
- $\Delta 6$ PLATED WITH GOLD FLASH FOR A LENGTH OF .040 MIN FROM MATING END, .000100-.000200 TIN OR TIN-LEAD ON COMPLIANT PIN, ALL OVER .000030 NICKEL ON ENTIRE CONTACT.
- $\Delta 7$ PLATED WITH .000030 GOLD FOR A LENGTH OF .040 MIN FROM MATING END, WITH POINT OF MEASUREMENT .020 FROM MATING END OF CONTACT, .000100-.000200 TIN OR TIN-LEAD ON COMPLIANT PIN, ALL OVER .000050 NICKEL ON ENTIRE CONTACT.
- $\Delta 8$ SCREWLOCKS: NICKEL PLATED.
- $\Delta 9$ SCREWLOCKS MUST WITHSTAND 6 INCH-LBS TORQUE AND 45 LBS PULL OUT FORCE FROM MATING FACE SIDE.
- $\Delta 10$ SCREWLOCKS MUST BE FLUSH TO .015 BELOW MATING FACE.

$\Delta 7$	745031-2
$\Delta 6$	745031-1
CONTACT FINISH	PART NO

DO NOT SCALE PRINT. UNLESS SPECIFIED DIMENSIONS IN INCHES		DR 5-31-88 W LENKER		AMP INCORPORATED Harrisburg, Pa. 17105	
TOLERANCES ON:		CHK 6-1-88 S WELDON			
2 PLC DEC ±		APPD 7-14-88 R KARLOVICH		NAME	
3 PLC DEC ± .005		APPD 7-15-88 C ROHDE		RECEPTACLE ASSEMBLY, SIZE 3, 25 POSITION, WITH ACTION PIN CONTACTS & SCREWLOCKS, HIGH PROFILE, .093/.125 PC BOARD, AMPLIMITE [®] HD-20	
ANGLES ± 2°		PRODUCT SPEC 108-40014		SIZE	
MATERIAL		APPLICATION SPEC		FSCM NO	
MOLDED PARTS: $\Delta 2$		-		DRAWING NO	
CONTACTS: $\Delta 3$		-		D 00779	
HARDWARE: $\Delta 4$		WEIGHT		745031	
FINISH $\Delta 5$		-		SCALE	
CONTACTS: SEE TABLE		-		4:1	
HARDWARE: $\Delta 6$		-		SHEET	
				1 OF 1	