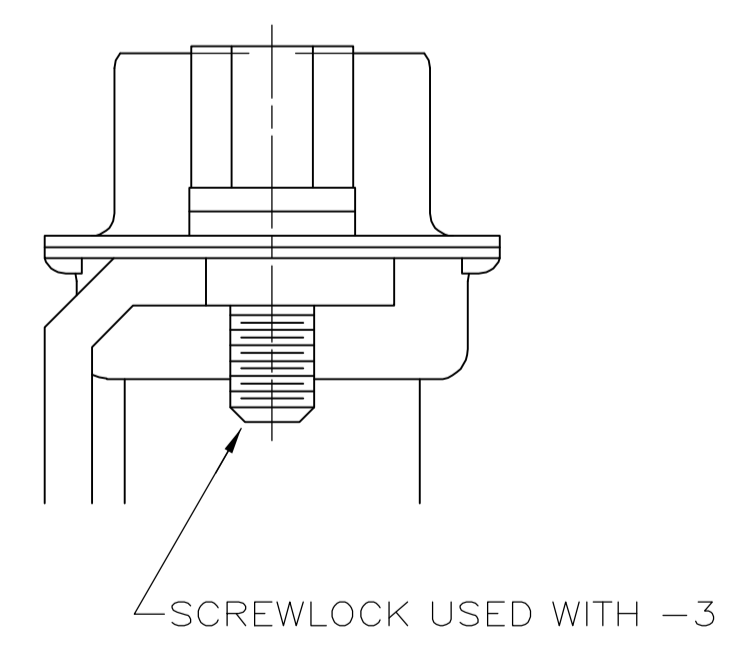
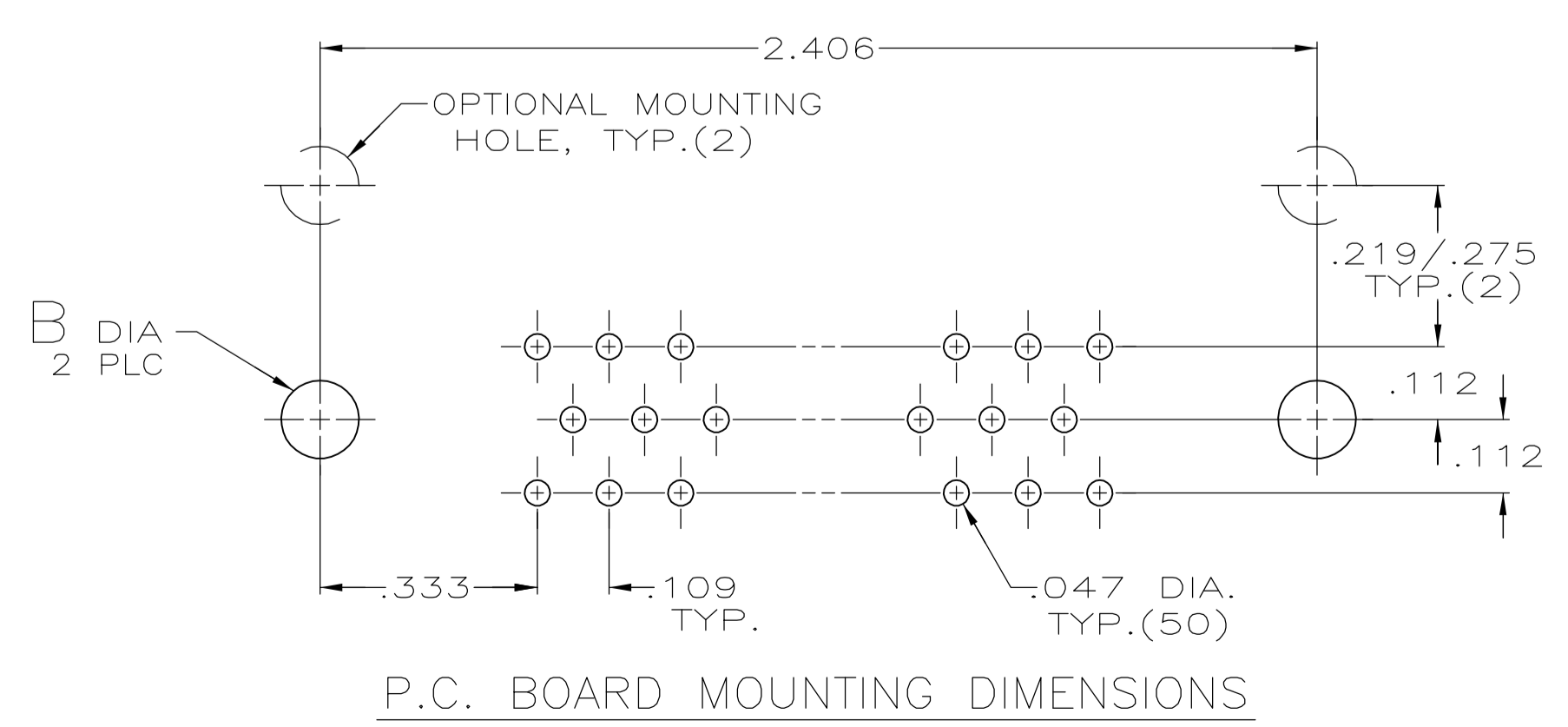
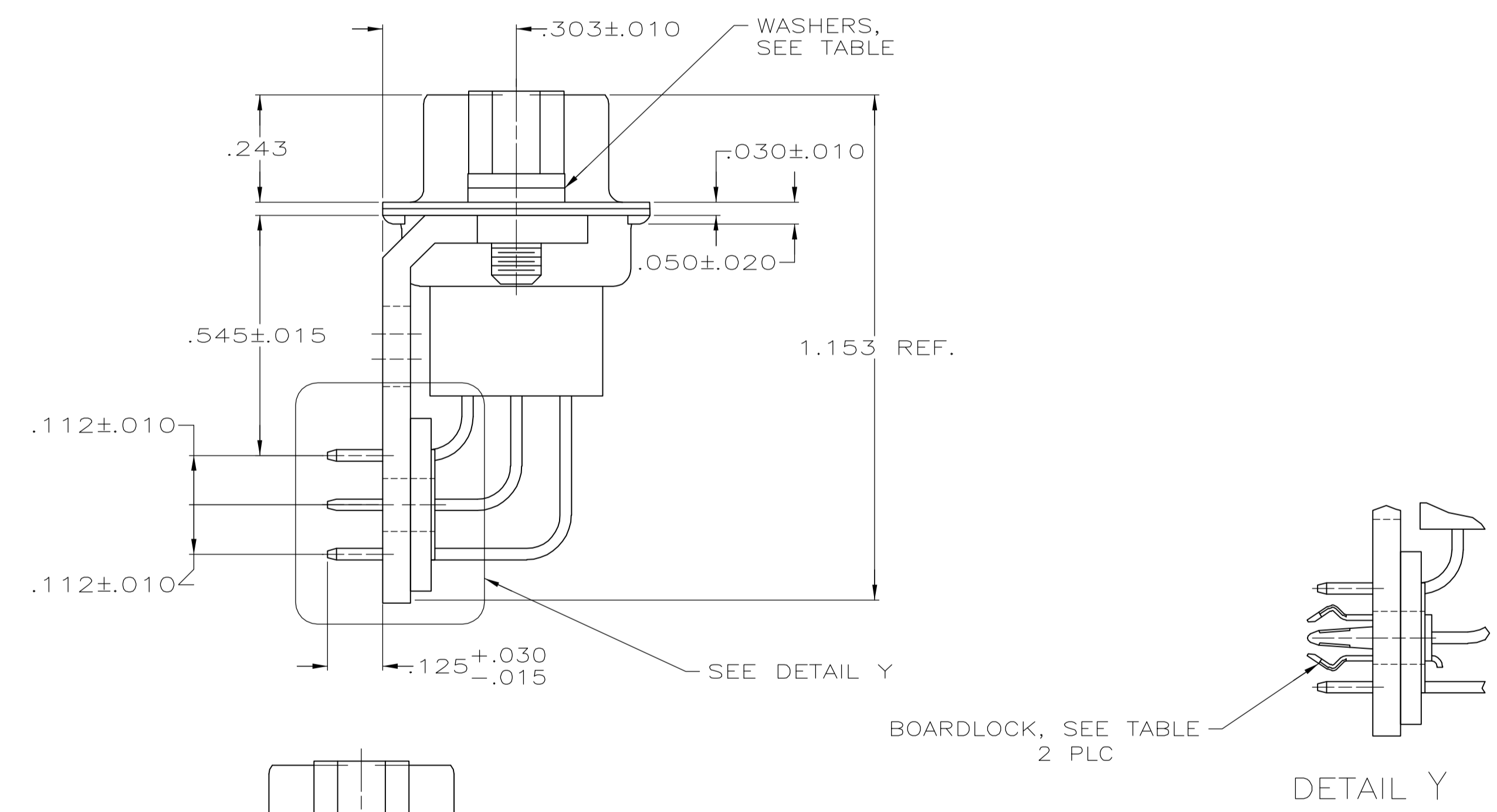
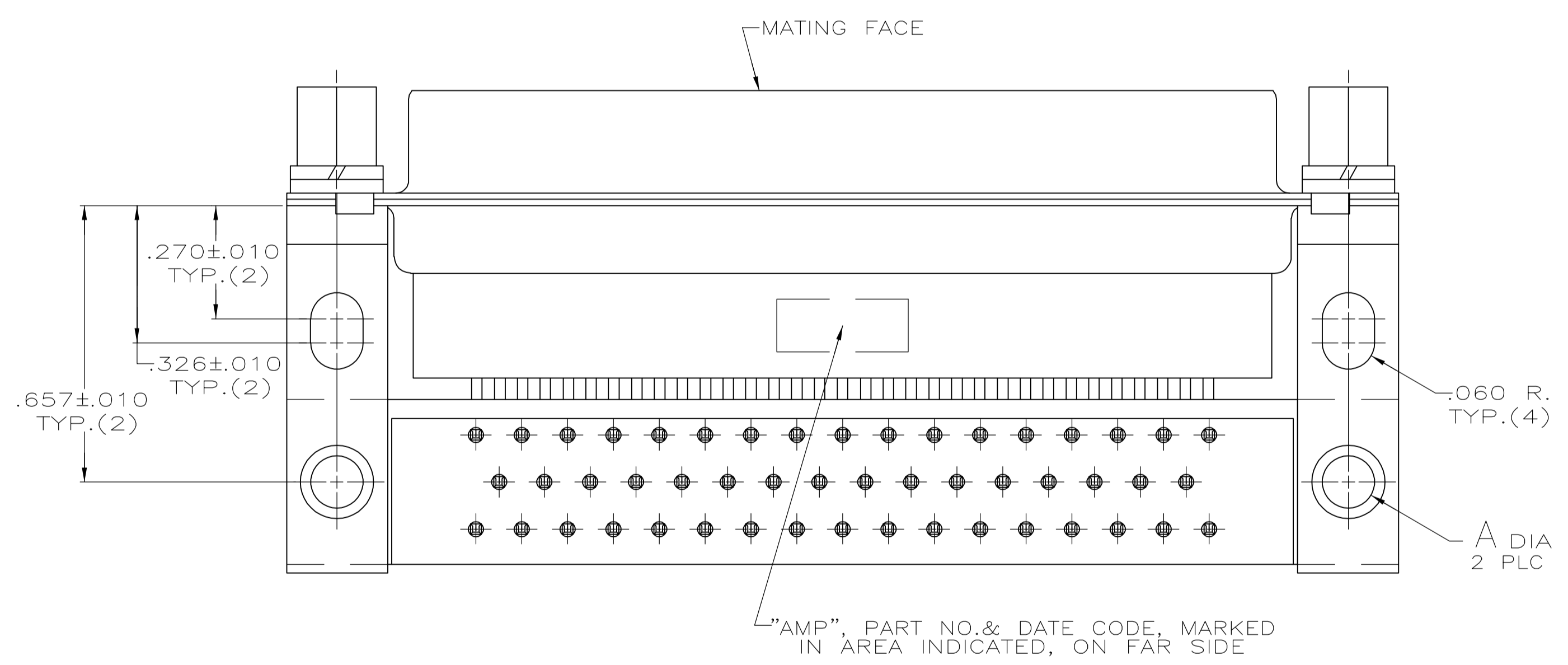


- ① MOLDED PARTS: FLAME RETARDANT 94V-0 RATED THERMOPLASTIC, BLACK
 CONTACTS: PHOSPHOR BRONZE
 SHELLS AND BRACKETS: STEEL
 SCREWLOCKS AND WASHERS: STEEL
 BOARDLOCK: BRASS
- ② SHELLS: .000200 MIN TIN OR TIN-LEAD OVER .000100 MIN COPPER.
 BRACKETS: .000200 MIN TIN OVER .000050 MIN COPPER.
 SCREWLOCKS AND WASHERS: .000200 MIN ZINC WITH CLEAR CHROMATE COATING
 BOARDLOCK: .000150 MIN TIN-LEAD OVER .000050 MIN NICKEL.
 CONTACTS: SEE TABLE
- ③ GOLD FLASH FOR LENGTH OF .100 MIN FROM MATING END, .000100 MIN TIN-LEAD ON OPPOSITE END, BOTH OVER .000050 MIN NICKEL.
- ④ .000030 MIN GOLD FOR LENGTH OF .100 MIN FROM MATING END, .000100 MIN TIN-LEAD ON OPPOSITE END, BOTH OVER .000050 MIN NICKEL.
 -OR-
 GOLD FLASH OVER .000030 MIN PALLADIUM NICKEL FOR A LENGTH OF .100 MIN FROM MATING END, .000100 MIN TIN-LEAD ON OPPOSITE END, BOTH OVER .000050 MIN NICKEL.
- ⑤ ADVANCED PART NUMBER, NOT PRODUCTION TOOLED.
- 6. CONNECTOR MATES WITH ANY 50 POS. PLUG IN AMPLIMITE SERIES & COMPLIES WITH AMP SPEC. 109-40,005 WHERE APPLICABLE.



OBSOLETE	NO	YES	.125±.003	-	③	747193-5
OBSOLETE	YES	YES	.125±.003	-	③	747193-4
	YES	NO	.120	.120	④ ⑤	747193-3
	YES	NO	.120	.120	④	747193-2
	YES	NO	.120	.120	③	747193-1
WASHERS	BOARDLOCK	B	A	CONTACT FINISH	PART NUMBER	

THIS DRAWING IS A CONTROLLED DOCUMENT.

DWN: J.GERACE 8-27-84		Tyco Electronics Corporation
CHK: J.GERACE 8-27-84		Harrisburg, PA 17105-3608
DIMENSIONS: INCHES	TOLERANCES UNLESS OTHERWISE SPECIFIED:	PRODUCT SPEC
0 PLC ± -	1 PLC ± -	APPLICATION SPEC
2 PLC ± -	3 PLC ± -	SIZE: A1
4 PLC ± -	ANGLES ± °	DWG NO: 00779
MATERIAL	FINISH	REV: 747193
①	②	CUSTOMER DRAWING

RECEPTACLE ASSEMBLY, SIZE 5, 50 POS., RIGHT ANGLE, .545 SERIES, .025 SQ. POSTS, W/ SCREWLOCKS, AMPLIMITE HDP

SCALE: - SHEET 1 OF 1 REV J