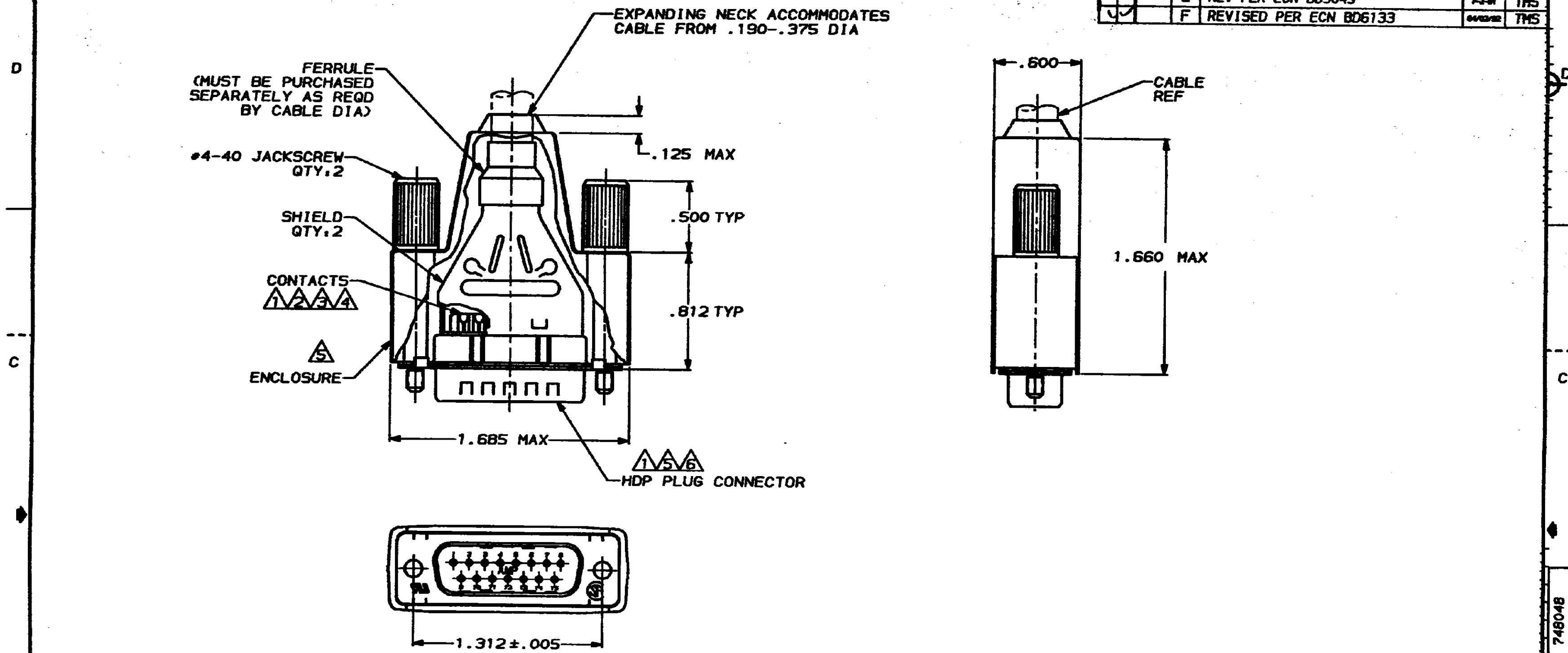


DRAWING MADE IN THIRD ANGLE PROJECTION  
 THIS DRAWING IS UNPUBLISHED. RELEASED FOR PUBLICATION  
 COPYRIGHT 19 BY AMP INCORPORATED. ALL INTERNATIONAL RIGHTS RESERVED.

REV	LOG	REV	DATE	DESCRIPTION	DATE	APPD
2	BD	39				
				E REV PER ECN B05049	7-2-81	TMS
				F REVISED PER ECN B06133	8/28/82	TMS



- ▲ PLUG CONNECTOR FULLY LOADED WITH CONTACTS. ALL OTHER PARTS ARE SHIPPED UNASSEMBLED, EACH PART INDIVIDUALLY BULK PACKED.
- ▲ PHOSPHOR BRONZE PER QQ-B-750.
- ▲ SOLDER CUP WILL ACCOMMODATE 20 AWG MAX WIRE.
- ▲ GOLD FLASH FOR LENGTH OF .150 MIN ON MATING END. .000150-.000300 TIN LEAD ON SOLDER END, ALL OVER .000030 NICKEL ON ENTIRE CONTACT.
- ▲ FLAME RETARDANT 94V-0 RATED THERMOPLASTIC, BLACK.
- ▲ STEEL PER ASTM A109.
- ▲ TIN PLATING PER MIL-T-10727.
- ▲ ZINC PLATING PER ASTM B633, TYPE II, CLASS SCI, BLACK CHROMATE.

▲	748048-1
CONTACT FINISH	PART NUMBER

DO NOT SCALE PRINT. UNLESS SPECIFIED DIMENSIONS IN INCHES TOLERANCES ON: 2 PLC DEC ± - 3 PLC DEC ± .020 ANGLES ± -	DR 6-7-90 J GALLUCCI BG CHK 8-31-90 J. McCLINTON APPD 9-4-90 BOB TAYLOR APPD 9-4-90 J. ASSINI	AMP INCORPORATED Murrysburg, Pa. 17105	
MATERIAL CONTACTS: ▲ MOLDED PARTS: ▲ SHELLS & SHIELDS: ▲ JACKSCREWS: ZINC ALLOY ▲	PRODUCT SPEC -	NAME BULK KIT, PLUG, AMPLIMITE™, SOLDER CUP, SHIELDING ENCLOSURE, 15 POSN, SIZE 2, HDP-20	
FINISH CONTACTS: SEE TABLE SHELLS & SHIELDS: ▲ JACKSCREWS: ▲	APPLICATION SPEC -	SIZE C	FSCH NO 00779
	WEIGHT -	SCALE 2:1	DRAWING NO 748048
			SHEET 1 OF 1