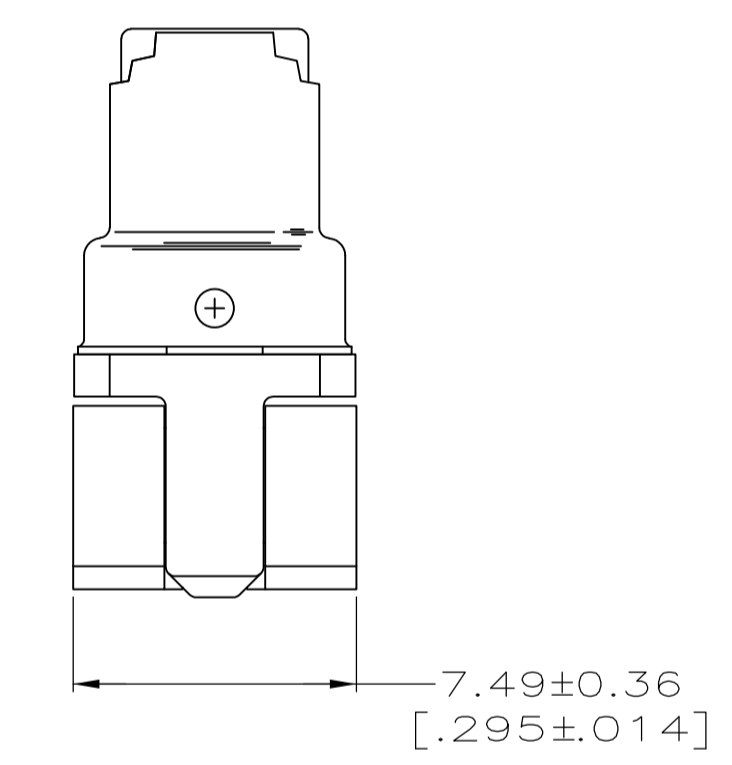
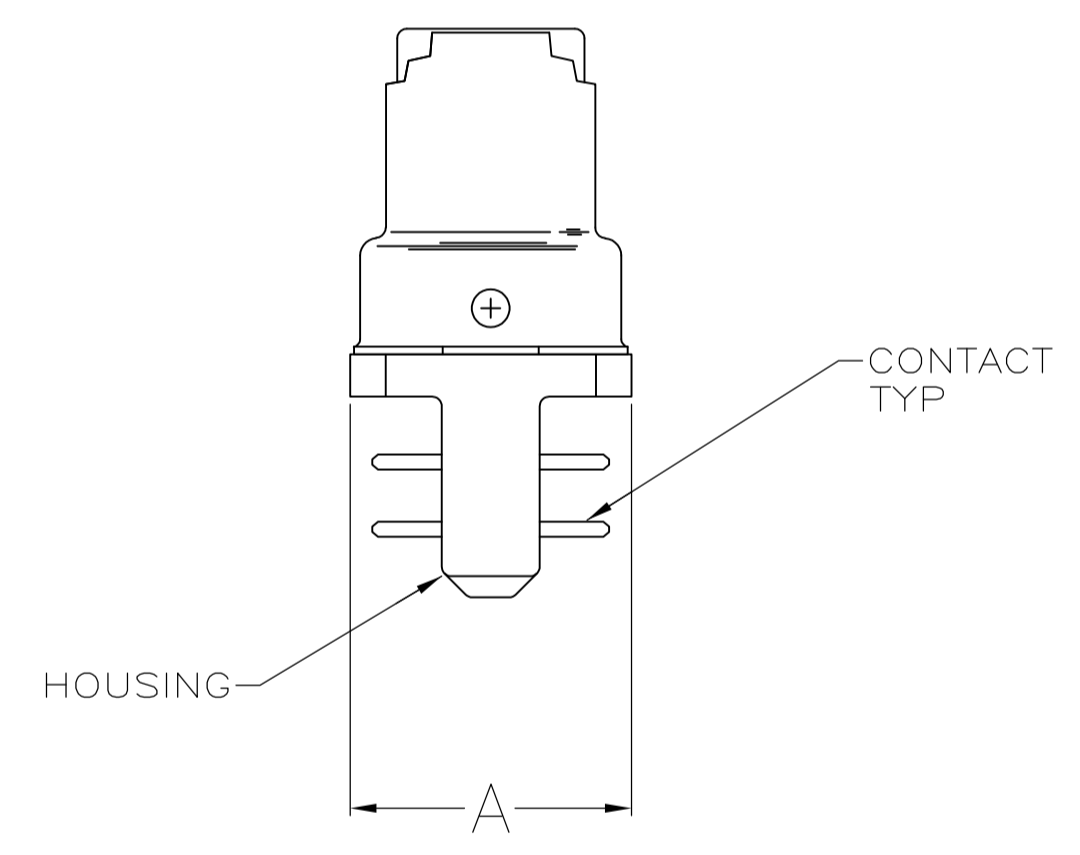
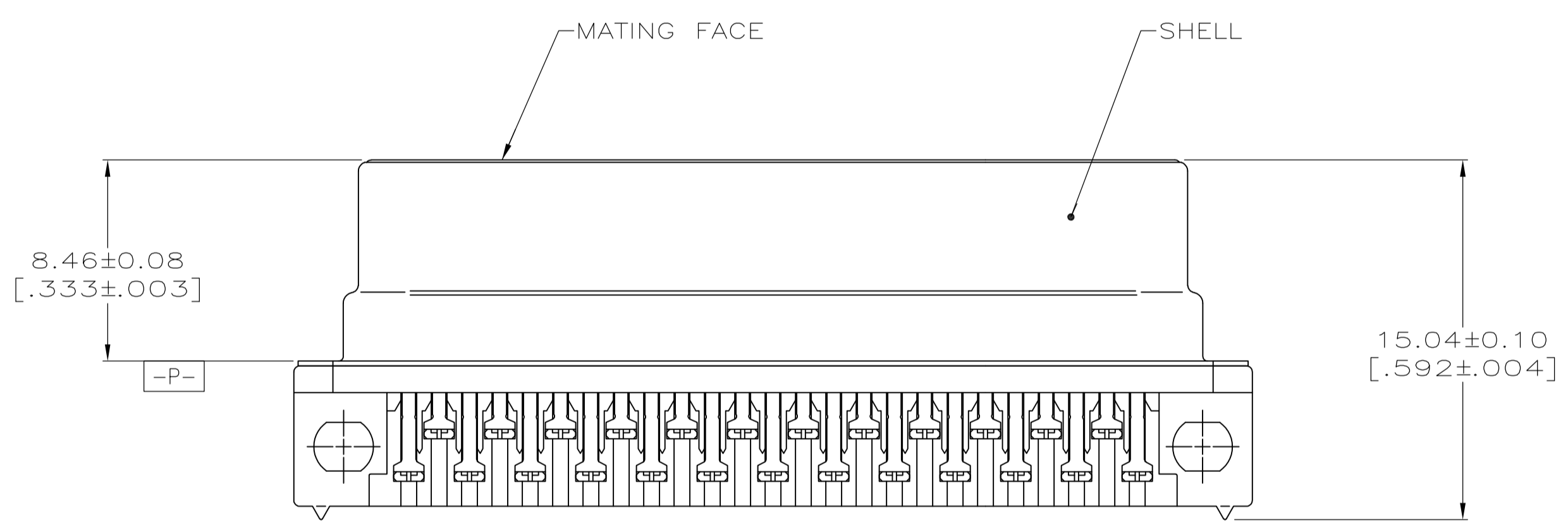
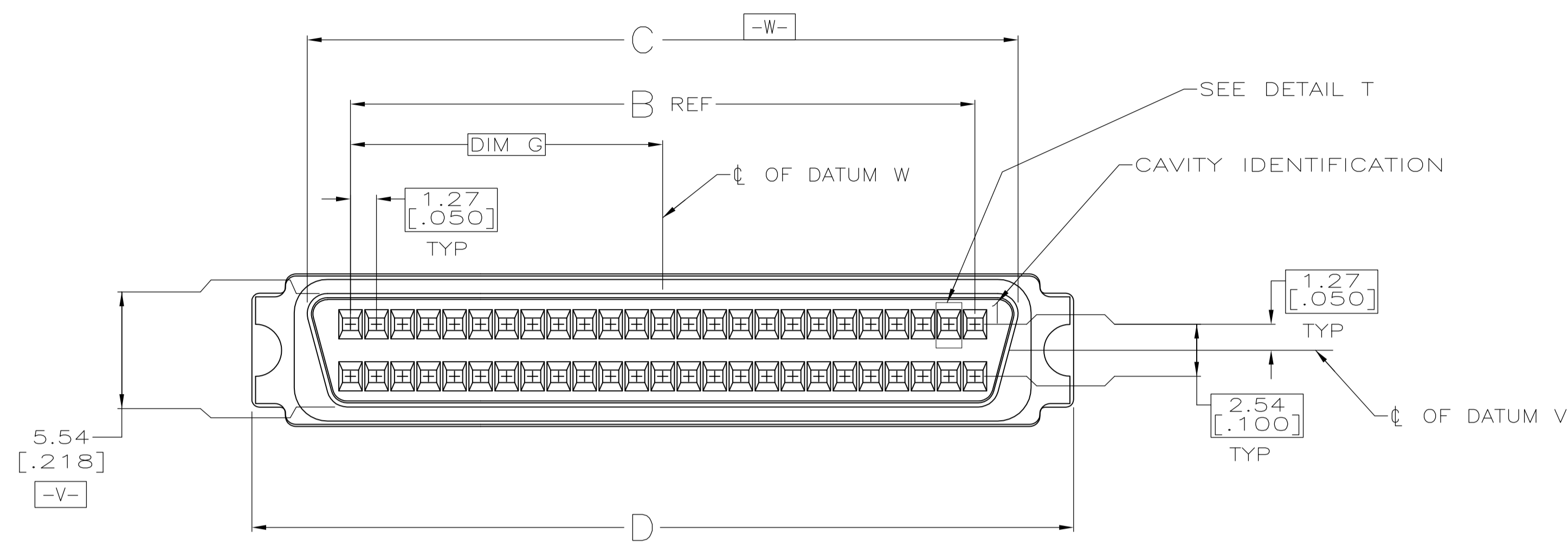
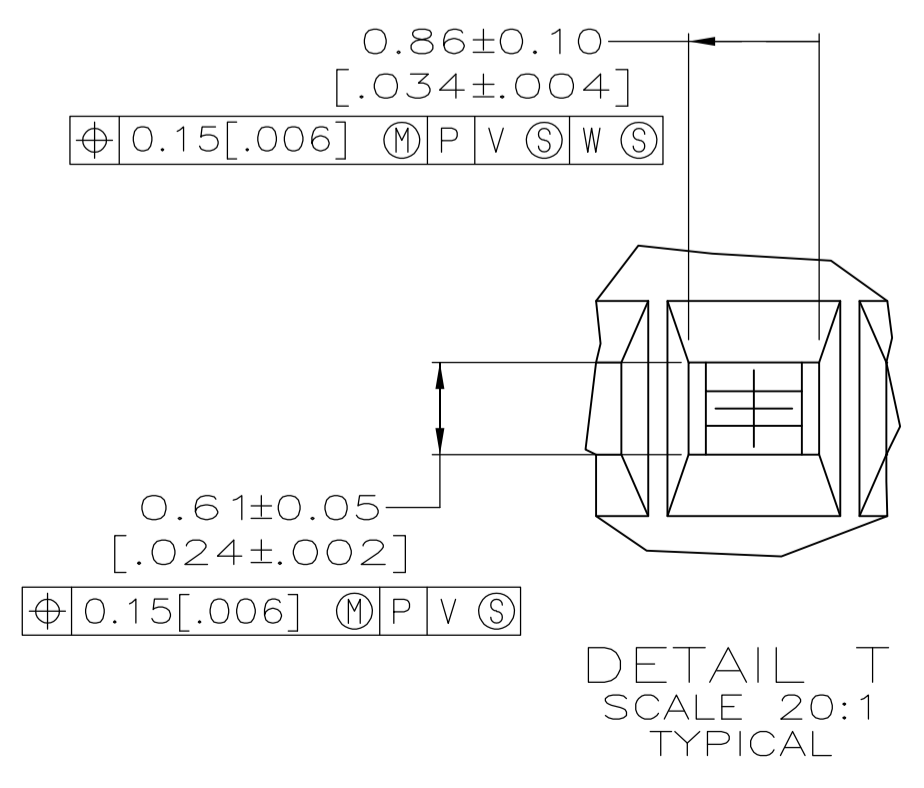
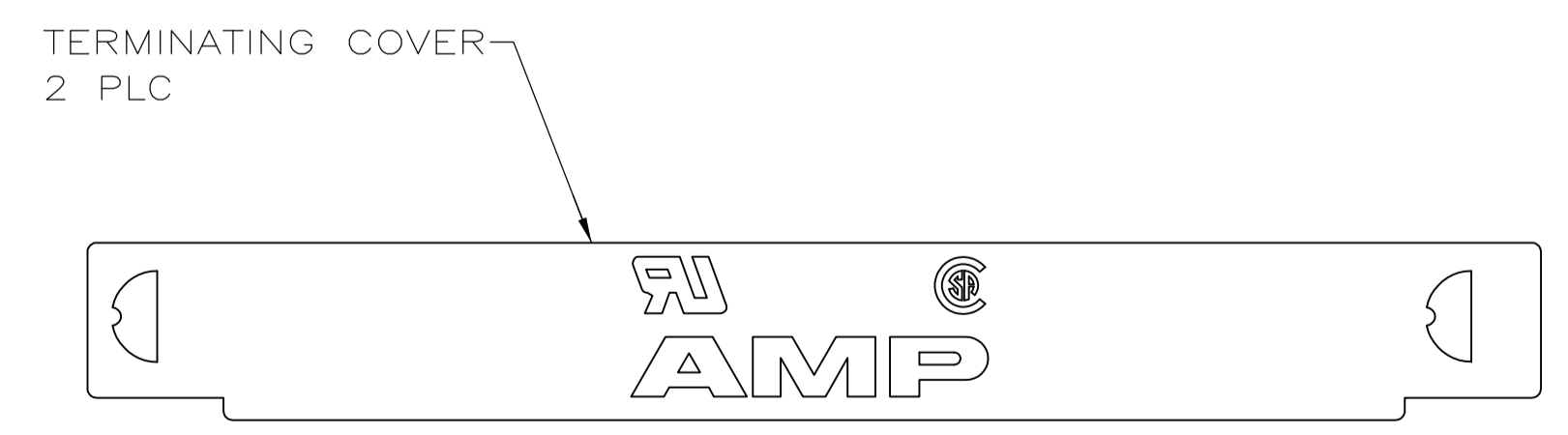
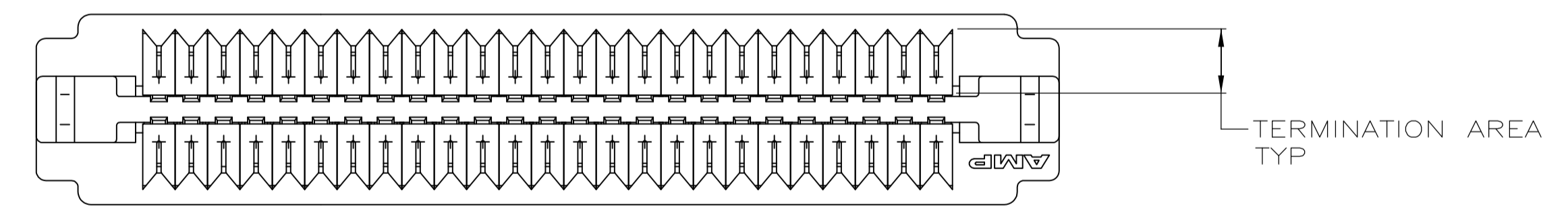


| LOC | | DIST | | REVISIONS | | | |
|-----|----|---------------------------|----------|-----------|-------|--|--|
| GP | 00 | REV | DATE | BY | APP'D | | |
| A | | REVISED PER ECO-07-010444 | 8/MAY/07 | ZMR | BAS | | |



TERMINATED VIEW



- 1 MATERIAL
 CONTACTS: PHOSPHOR BRONZE.
 SHELL: CARBON STEEL
 HOUSING: POLYESTER, BLACK, UL 94V-0 RATED.
 TERMINATING COVERS: POLYESTER, UL 94V-0 RATED, COLOR-BLACK.
- 2 FINISH
 CONTACTS: EITHER 0.76µm [.000030] MIN GOLD PLATE OR 0.08µm [.000003] GOLD FLASH OVER 0.76µm [.000030] MIN PALLADIUM NICKEL PLATE FOR A LENGTH OF 0.64 [.025] MIN, 0.13 [.005] MAX FROM MATING END, 1.27µm [.000050] MIN TIN IN TERMINATION AREA, ALL OVER 1.27µm [.000050] MIN NICKEL UNDERPLATE OVER ENTIRE CONTACT.
 SHELL: 5.08µm [.000200] MIN NICKEL OVER 1.27µm [.000050] MIN COPPER.
- 3 RECOMMENDED WIRE: 30 AWG - 28 AWG, SEE TABLE FOR INSULATION DIA. WIRE MUST BE APPROVED BY AMP ENGINEERING.
4. COVERS PACKAGED SEPARATE FROM CONNECTORS IN SAME SHIPPING CONTAINER.

**COPYRIGHT 2005
 TYCO ELECTRONICS CORP
 ALL RIGHTS RESERVED**

| WIRE OUTER DIA | G | D | C | B | A | NO OF POSN | PART NO. |
|------------------------------|-----------------|------------------|------------------|------------------|----------------|------------|-----------|
| 0.81-0.91 [.032-.036] DIA | 20.96 [.825] | 51.54 [2.029] | 46.13 [1.816] | 41.91 [1.650] | 7.39 [.291] | 68 | 5786860-7 |
| 1 | 2 | 3 | 4 | 5 | 6 | 7 | 8 |

| | | | | | |
|--|--|--|--|--|--|
| THIS DRAWING IS A CONTROLLED DOCUMENT. | | DIN L VARELA - DOCKS 02-18-05 | | Tyco Electronics Corporation Harrisburg, PA 17105-3608 | |
| DIMENSIONS: mm [INCHES] | | TOLERANCES UNLESS OTHERWISE SPECIFIED: | | APPROVED BY: M. WALMSLEY 02-18-05 | |
| 0 PLC ± - | | 1 PLC ± - | | NAME: M. WALMSLEY | |
| 2 PLC ± 0.13 [.005] | | 3 PLC ± - | | PRODUCT SPEC: 108-1228 | |
| 4 PLC ± - | | ANGLES ± - | | APPLICATION SPEC: 114-40029 | |
| MATERIAL: 1 | | FINISH: 2 | | SIZE: A1 | |
| CUSTOMER DRAWING | | SCALE: 5:1 | | SHEET: 1 OF 1 | |