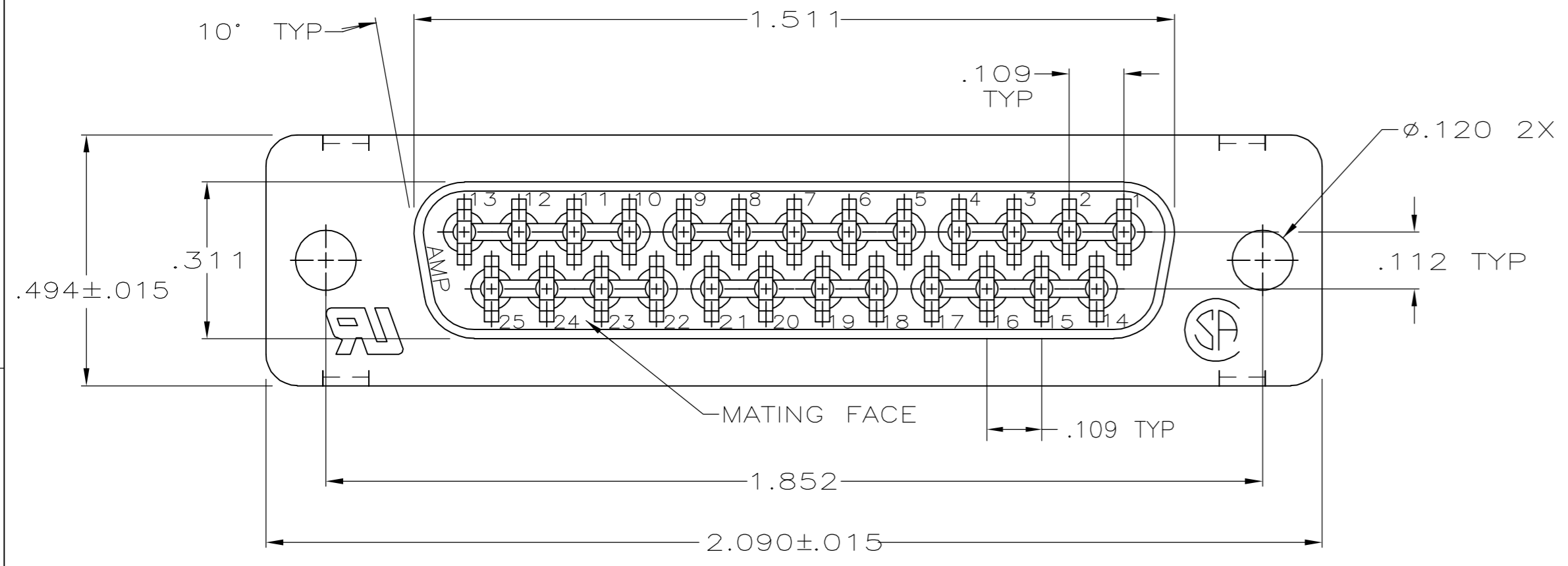
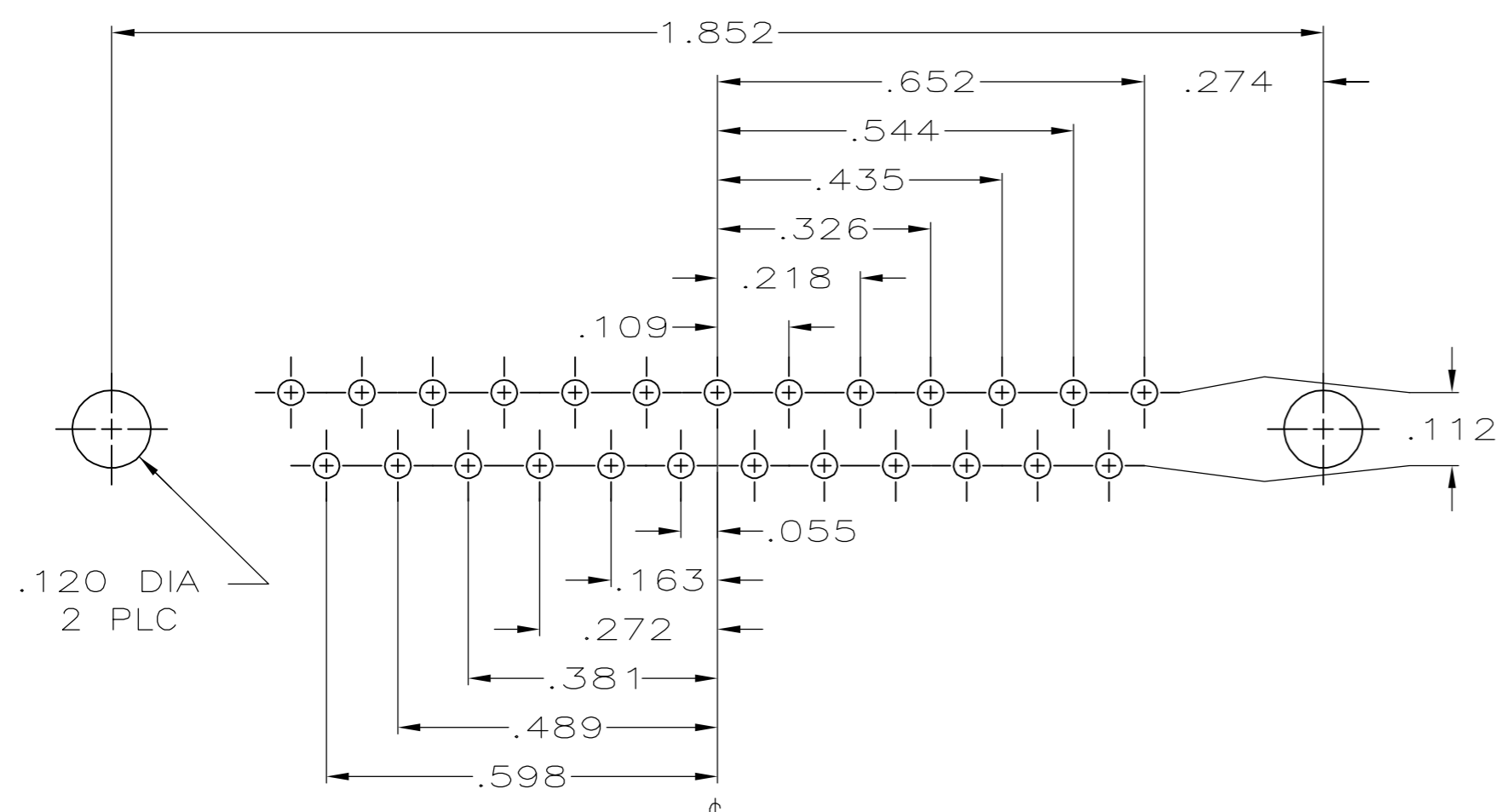
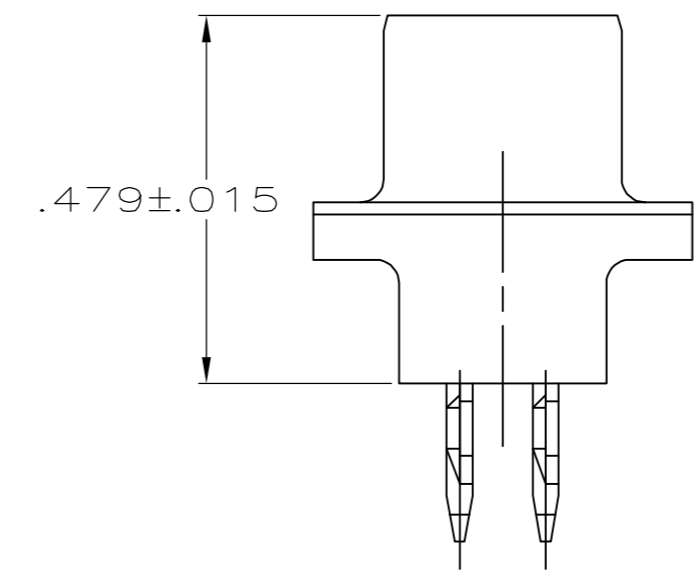
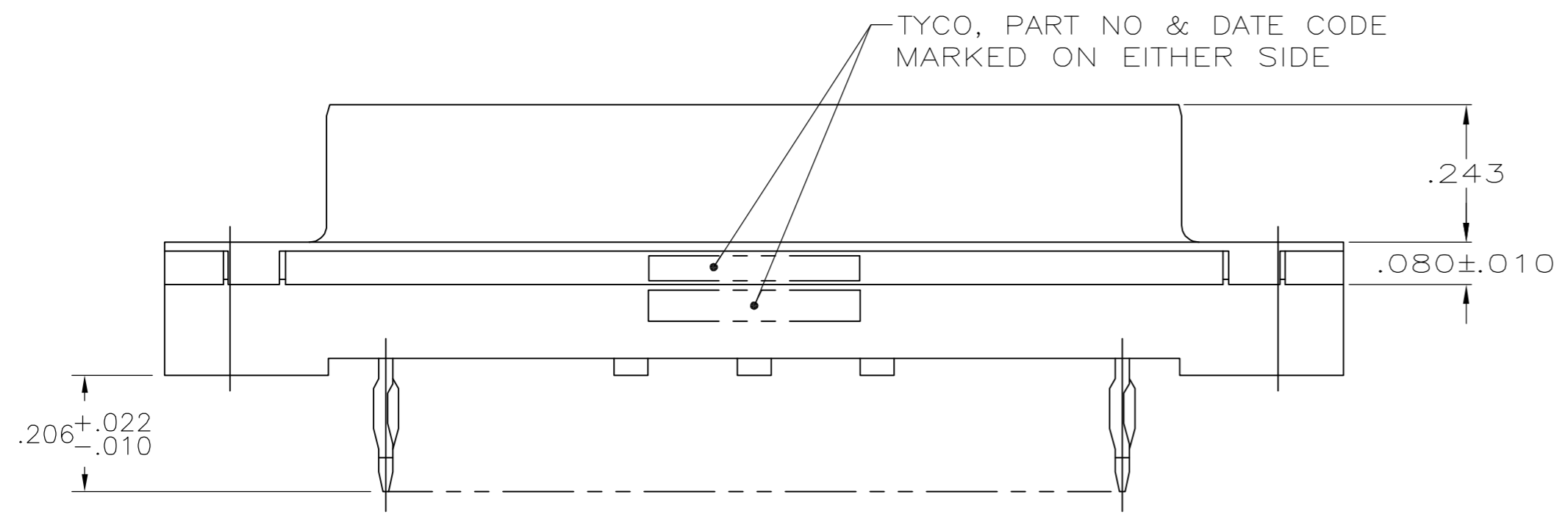


THIS DRAWING IS UNPUBLISHED. RELEASED FOR PUBLICATION  
 © COPYRIGHT 2006 BY TYCO ELECTRONICS CORPORATION. ALL RIGHTS RESERVED.

LOC		DIST		REVISIONS			
P	LTR	DESCRIPTION	DATE	DWN	APVD		
GP	00	A	RELEASED PER EC 0513-0024-05	06MAR06	GP	JG	



- 1 RECOMMENDATIONS FOR .093 MIN THICK PC BOARD:
  - A. HOLE DIAMETER AFTER DRILLING=.045±.001.
  - B. HOLE DIAMETER AFTER TIN PLATING= .037-.043.
  - C. HOLE DIAMETER AFTER REFLOW= .036-.043.
  - D. PC BOARD PLATING TO BE .000300 MIN TIN OVER .002±.001 COPPER.
- 2 MATERIAL:
  - HOUSING: GLASS-FILLED NYLON OR POLYESTER, UL94V-0 RATED
  - COLOR: BLACK.
  - CONTACTS: COPPER ALLOY
  - SHELL: CARBON STEEL.
- 3 FINISH:
  - CONTACTS: DUPLEX PLATED: .000030 MIN GOLD ON MATING SURFACES. .000100 MIN TIN ON COMPLIANT PIN, ALL OVER .000050 MIN NICKEL.
  - SHELL: .000200 MIN TIN OVER .000100 MIN COPPER.



P.C. BOARD MOUNTING DIMENSIONS 1

5745922-2  
PART NUMBER

THIS DRAWING IS A CONTROLLED DOCUMENT.		DWN G.PETERS/DTI 06MAR06	Tyco Electronics Corporation Harrisburg, PA 17105-3608	
DIMENSIONS: INCHES		CHK S.BOLASH 06MAR06		
TOLERANCES UNLESS OTHERWISE SPECIFIED:		APVD M.WALMSLEY 06MAR06	NAME	
0 PLC ± -		PRODUCT SPEC	108-40014	
1 PLC ± -		APPLICATION SPEC	-	
2 PLC ± .005		SIZE	CAGE CODE	DRAWING NO
3 PLC ± -		A2	00779	C=5745922
4 PLC ± -		WEIGHT	-	
ANGLES ± -		CUSTOMER DRAWING		
FINISH		SCALE	SHEET	REV
2		4:1	1 of 1	A

5745922