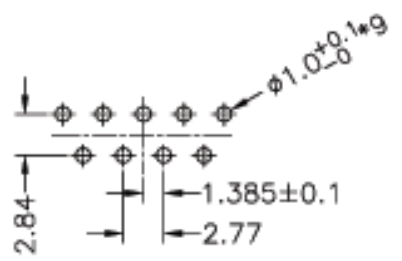
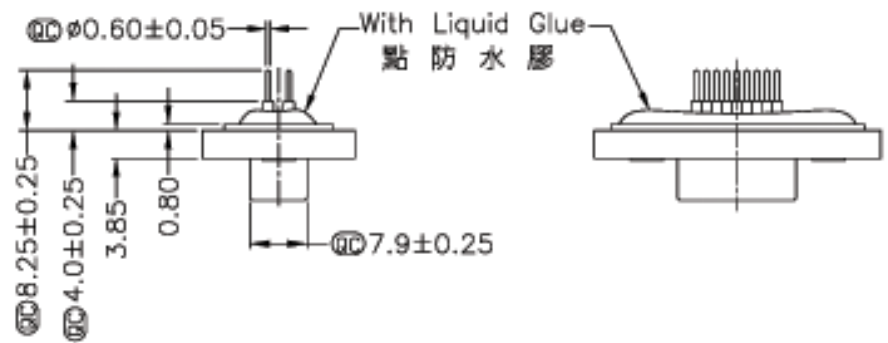


REV.	CON. NO.	DATE	DRW.	DESCRIPTION



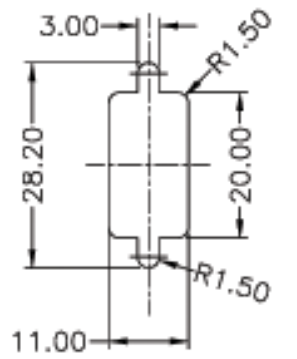
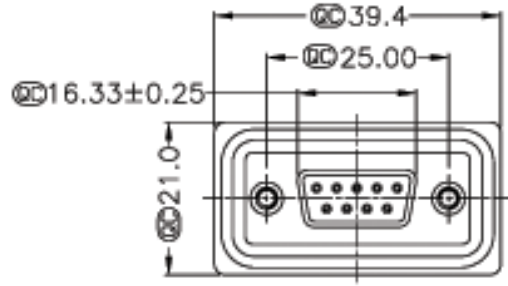
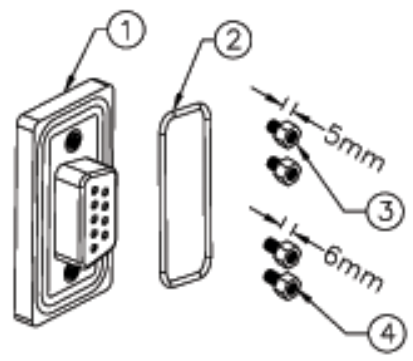
9 Pin Female Connector  
PCB Pin Layout  
Scale 2:1



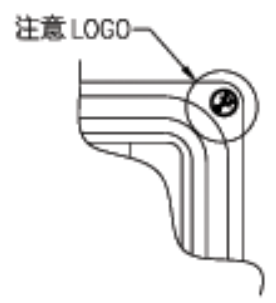
Panel Thickness  
面板厚度  
X(Max.)

Screw L=5.0 For Panel Thickness Under 1.2mm  
適用板厚為 1.2mm 以下

Screw L=6.0 For Panel Thickness Between 1.2~2.0mm  
適用板厚為 1.2~2.0mm



Recommended Panel Cut-Out  
建議挖孔尺寸



- Note:
- $\text{Ⓢ}$  Important Dimension. (Ⓢ為重點尺寸)
  - Waterproof Rate : IP67
  - Connector: Black, Nylon+GF
  - Pin: Copper Alloy, Gold Plated
  - Do Mating Test After Glued 點膠後, 須作對插測試
  - 注意 LOGO 為  $\text{Ⓢ}$

UNIT:mm		TITLE D-SUB,D-SUB,DB-09PFFP
TOLERANCE JX ±0.25 JXX ±0.1 JXXX ±0.05 ANGLES ±1°	SCALE Free	SHEET 1 OF 1
REV. 01	SIZE A4	$\text{Ⓢ}$ : Inspection Item



ITEM NO A-DF-09-PP-WP-R	DRAWN BY Gao Ling	DATE 2006/05/05
DWG NO A-DF-09-PP-WP-R	CHECKED BY Robert Hsu	DATE 2006/05/24
	APPROVED BY Martin	DATE 2006/05/25