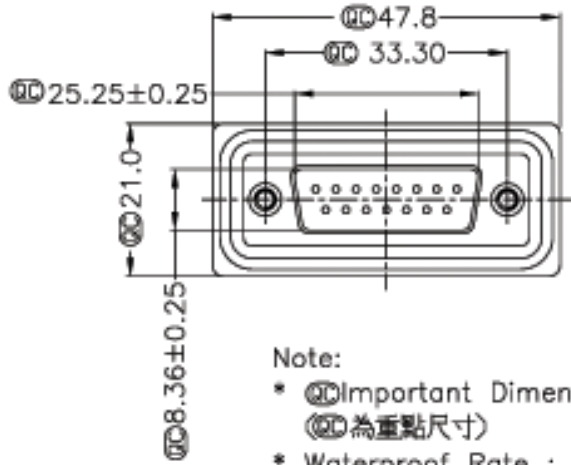
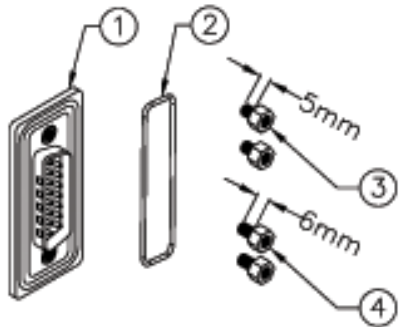
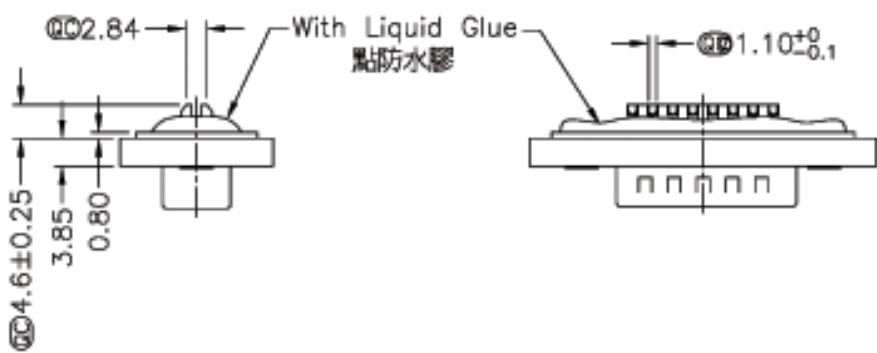


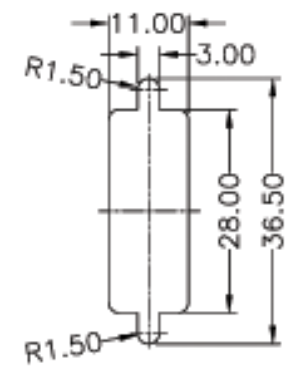
REV.	CON. NO.	DATE	DRW.	DESCRIPTION



Panel Thickness
面板厚度
X(Max.)

Screw L=5.0 For Panel Thickness Under 1.2mm
適用板厚為 1.2mm 以下

Screw L=6.0 For Panel Thickness Between 1.2~2.0mm
適用板厚為 1.2~2.0mm



Recommended Panel Cut-Out
建議挖孔尺寸

- Note:
- * \varnothing Important Dimension. (\varnothing 為重點尺寸)
 - * Waterproof Rate : IP67
 - * Connector: Black, Nylon+GF
 - * Pin: Copper Alloy, Gold Plated
 - * Do Mating Test After Glued
點膠後, 須作對插測試
 - * Applicable Wire Range: 22AWG-26AWG
適用電線範圍: 22AWG-26AWG
 - * 注意 LOGO 為 $\text{\textcircled{A}}$

UNIT:mm		TITLE D-SUB,D-SUB,DB-15PMMS
TOLERANCE JX ± 0.25 JXX ± 0.1 JXXX ± 0.05 ANGLES $\pm 1'$	SCALE Free	SHEET 1 OF 1
REV. 01	SIZE A4	\varnothing : Inspection Item



ITEM NO A-DS-15-LL-WP-R	DRAWN BY Gao Ling	DATE 2006/05/05
DWG NO A-DS-15-LL-WP-R	CHECKED BY Robert Hsu	DATE 2006/05/24
	APPROVED BY Martin	DATE 2006/05/25