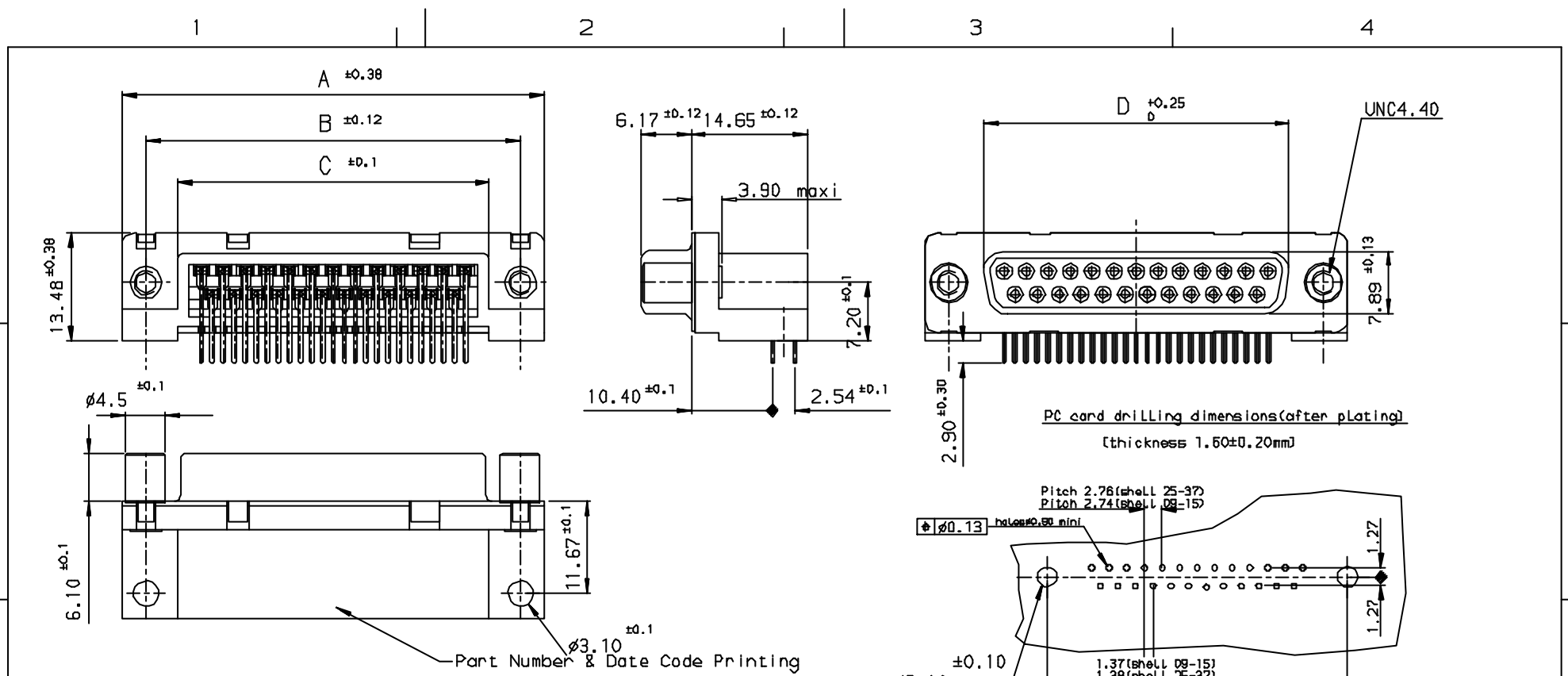


Tous droits strictement réservés. Reproduction ou communication à des tiers
Interdit sans autorisation écrite de la direction de la production FCI.
Propriété de FCI. Copy right FCI.

A
FCI

ALL rights strictly reserved. Reproduction or communication to third parties in any
form whatever is not permitted without written authority from the proprietor.
Property of FCI. Copy right FCI.

D



SHELL	A±0.38	B±0.12	C±0.10	D±0.25	E±0.07	PART NUMBER	PART NUMBER
09	30.81	24.99	16.96	16.21	10.96	D09S13A4PV00**	D09S13A6PV00**
15	39.14	33.32	25.18	24.54	19.18	D15S13A4PV00**	D15S13A6PV00**
25	53.03	47.04	39.12	38.25	33.12	D25S13A4PV00**	D25S13A6PV00**
37	69.32	63.50	55.68	54.71	49.68	D37S13A4PV00**	D37S13A6PV00**

Gold flash 0,76 µ gold

LF FOR LEAD FREE

FOR ROHS DETAILS REFER DWG. NO. C01-8646-0000

Technical characteristics:
 Shell: steel tin plated
 Insulators: self-extinguishing thermoplastic, UL class 94V0
 Contacts size 20, phosphor bronze, gold on mating end, bright tin on termination end over nickel on entire contact
 Cycles: 500 for plating 6
 Cycles: 200 for plating 4
 Shell: look brass, tin plated

Electrical characteristics:
 max. current rating: 5A
 Test voltage: 1000V
 Rated voltage: 300V
 Contact resistance: <15mΩ
 Shell resistance: <5mΩ
 Insulation resistance: >5000MΩ

Climatic characteristics:
 Operating temperature range: -55° to +125°
Dimensions:
 In accordance with MIL-C-24308

INDEX	DATE	REVISION DESCRIPTION
1	21/7/05	LEAD FREE DETAILS ADDED
2		

Wr	Ec	no	Dr	date
e		105-0124	JS	27/7/05

			✓ Tolerance LINEAR ±0.1 ANGULAR ±1°	Projection MM
Dr JOHN SLEEBA	2/8/04	Product Family		Size A3
Eng GEORGE VJ	2/8/04	Spec ref		Scale
Chr GEORGE VJ	27/7/05	Material		ECN
Appr K Somasundaram	27/7/05			
A FCI	Title SOCKET CONNECT. SUB right angled spill WITH FEMALE SCREWLOCK		Dwg no C01-8646-0487	Rev. e
Catalog no		CUSTOMER COPY		Sheet 1 of 1