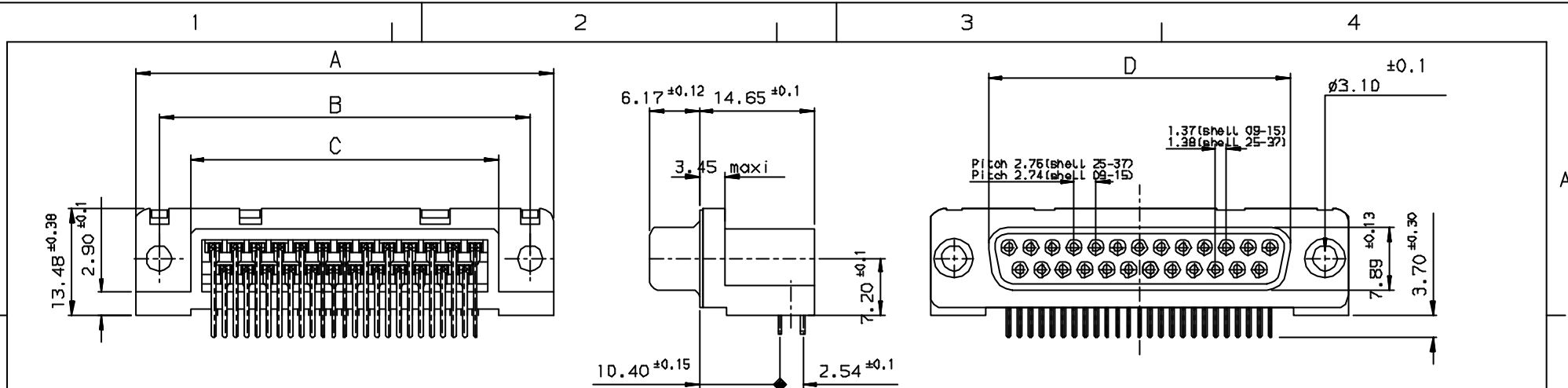


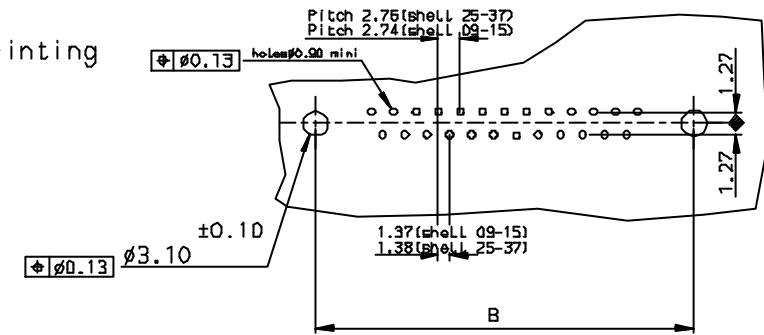
Tous droits strictement réservés. Reproduction ou communication à des tiers interdites sans autorisation écrite de la propriété de FCI. Droits de reproduction FCI.

FCI

All rights strictly reserved. Reproduction or issues in third parties in any form without the written authorization of the property of FCI. Copyright FCI.



PC card drilling dimensions (after plating)
(thickness 2.40±0.20mm)



SHELL	A±0.38	B±0.12	C±0.10	D±0.25	PART NUMBER
09	30.81	24.99	16.96	16.21	D09S13B*PA00**
15	39.14	33.32	25.18	24.54	D15S13B*PA00**
25	53.03	47.04	39.12	38.25	D25S13B*PA00**
37	69.32	63.50	55.68	54.71	D37S13B*PA00**

REQUIREMENTS

Technical characteristics:

Shell: steel tin plated
 Insulators: self-extinguishing thermoplastic, UL94V0
 Contacts size 20: phosphor bronze, gold on mating end, bright tin on termination end over nickel on entire contact
 Cycles: 500 mini for plating 6
 200 mini for plating 4

Electrical characteristics:

max. current rating: 5A
 Test voltage: 1000V
 Rated voltage: 300V
 Contact resistance: <15mΩ
 Shell resistance: <5mΩ
 Insulation resistance: >5000MΩ

Climatic characteristics:

Operating temperature range: -55°C +125°C

Dimensions:

In accordance with MIL-C-24308

LF FOR LEAD FREE

Plating: 4 --> Flash AU
 Plating: 6 --> 0.76µ AU

FOR ROHS DETAILS REFER DWG.NO: C01-8646-0000

Utr	Eon no	Dr	date
e	105-0124	E	27/7/05

Dr JOHN SLEERA		19/4/03	Product Family	D-SUB	Tolerance	Projection	MM
Eng GEORGE VJ		19/4/03	Spec ref		LINEAR ±0.1	ANGULAR ±1°	
Chr GEORGE VJ		27/7/05	Material				
Appr K Somasundaram		27/7/05					
FCI		Title		Dwg no		Rev.	
		SOCKET CONNECT.DELTA D:right angle spill without accessories.		C-8646-0153		e	
Catalog no		DELTA-D		CUSTOMER COPY		Sheet 1 of 1	

INDEX	DATE	REVISION DESCRIPTION
e	27/7/05	LEAD FREE DETAILS ADDED