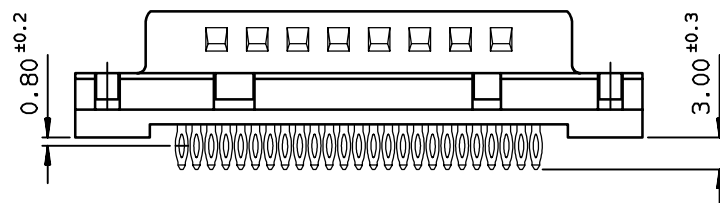
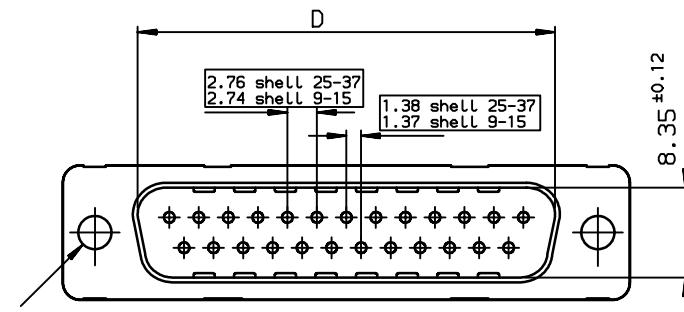
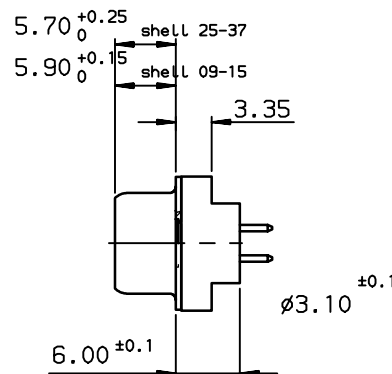
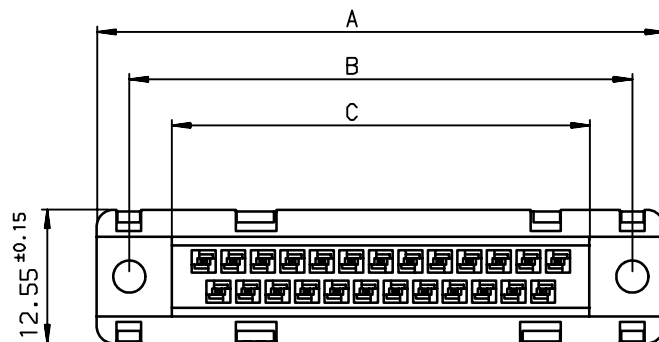


A

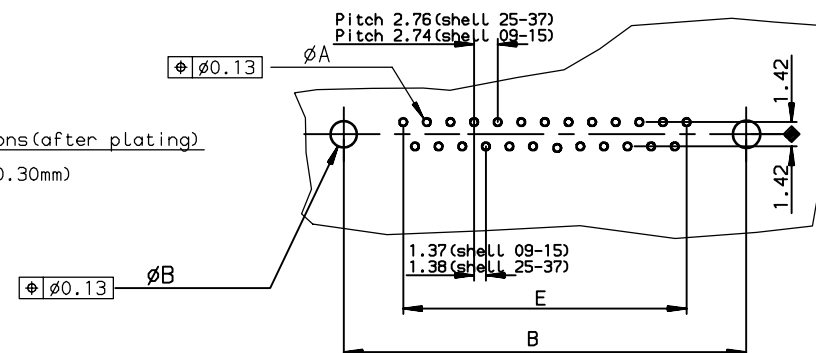
B

C

D



PC board drilling dimensions(after plating)  
(thickness ≤ 3.20±0.30mm)



## TIN LEAD PART NUMBER

SHELL	A±0.38	B±0.12	C±0.10	D±0.25	E±0.07	PART NUMBER	PART NUMBER
09	30.81	24.99	16.96	16.79	10.96	D09P91C4PA00	D09P91C6PA00
15	39.14	33.32	25.18	25.12	19.18	D15P91C4PA00	D15P91C6PA00
25	53.03	47.04	39.12	38.84	33.12	D25P91C4PA00	D25P91C6PA00
37	69.32	63.50	55.68	55.30	49.68	D37P91C4PA00	D37P91C6PA00
						gold flash	0.76µ gold




## LEAD FREE PART NUMBER

SHELL	A±0.38	B±0.12	C±0.10	D±0.25	E±0.07	PART NUMBER	PART NUMBER
09	30.81	24.99	16.96	16.79	10.96	D09P91C4PA00LF	D09P91C6PA00LF
15	39.14	33.32	25.18	25.12	19.18	D15P91C4PA00LF	D15P91C6PA00LF
25	53.03	47.04	39.12	38.84	33.12	D25P91C4PA00LF	D25P91C6PA00LF
37	69.32	63.50	55.68	55.30	49.68	D37P91C4PA00LF	D37P91C6PA00LF
						gold flash	0.76µ gold

## GENERAL CHARACTERISTICS AND ROHS INFORMATIONS:

SEE DRAWING C01-8646-0001

European Views

www.fciconnect.com			surface ISO 1302		tolerance std ISO 406 ISO 1101		projection 		mm 		
			TOLERANCES UNLESS OTHERWISE SPECIFIED								
Dr	JOUBERT	1995/08/11	ANGULAR	LINEAR	0.X		±0.1		size A3	Scale 2	
Eng	PESSON	1995/08/11			0.XX		±0.1				
Chr	LEGARE	1995/08/11			0.XX' ±2°		0.XXX				±0.1
Appr	LEGARE	1995/08/11	Product family					D-SUB		Spec ref -	
			title MALE CONNECTOR DELTA D STD EUROPE straight press-fit					dwg no C01-8646-0109		Rev. K	
catalog no			-					CUSTOMER		sheet 1 of 1	

rev	ecn no	dr	date
G	-	-	1996/07/16
H	LS05-004	MPE	2005/02/07
J	LS06-0095	LGO	2006-06-17
K	LS06-0140	LGO	2006-09-22
-	-	-	-
-	-	-	-
-	-	-	-

A

B

C

D