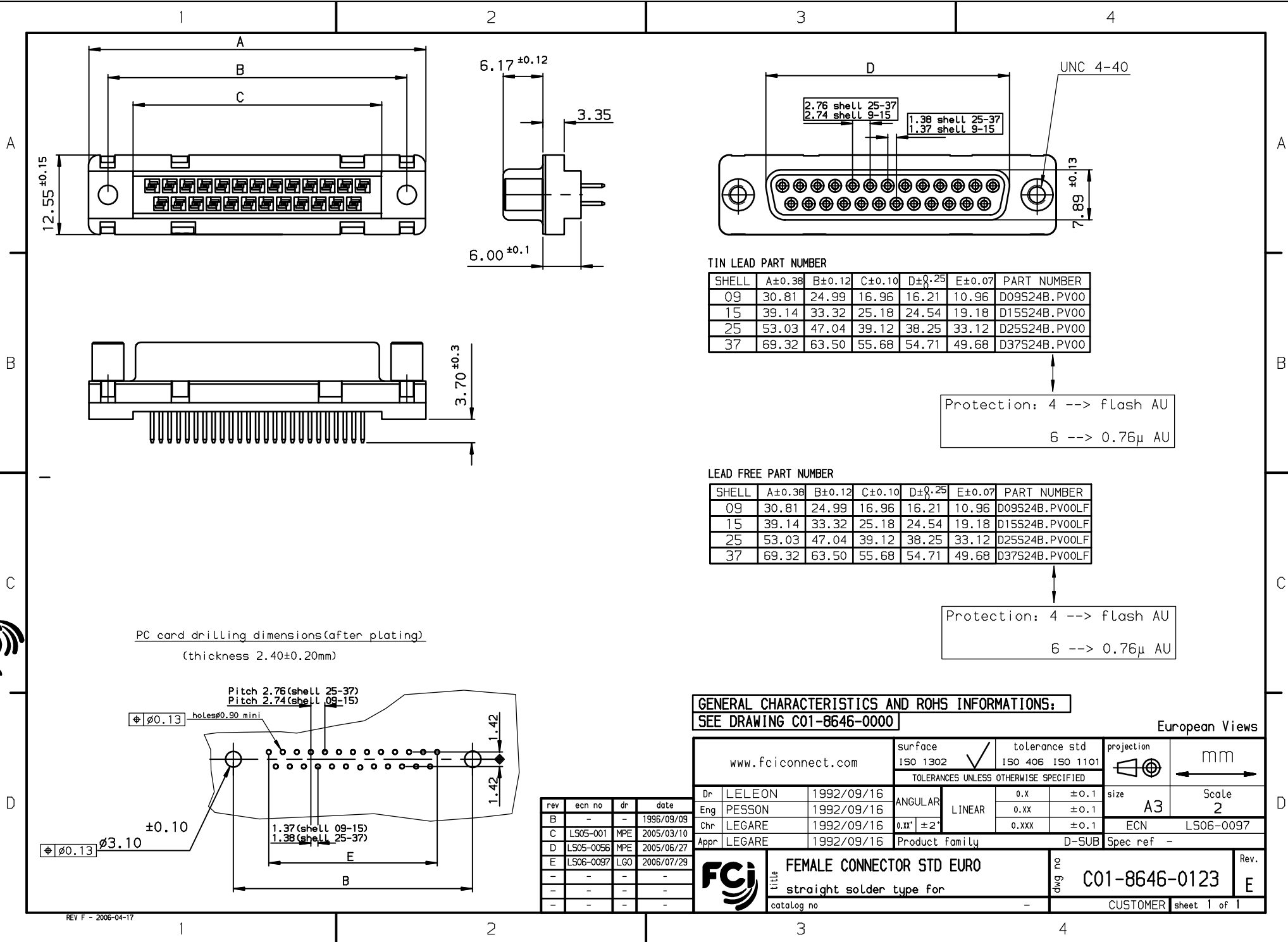




Copyright FCI.



TIN LEAD PART NUMBER

SHELL	A±0.38	B±0.12	C±0.10	D±0.25	E±0.07	PART NUMBER
09	30.81	24.99	16.96	16.21	10.96	D09S24B.PV00
15	39.14	33.32	25.18	24.54	19.18	D15S24B.PV00
25	53.03	47.04	39.12	38.25	33.12	D25S24B.PV00
37	69.32	63.50	55.68	54.71	49.68	D37S24B.PV00

Protection: 4 --> flash AU
6 --> 0.76µ AU

LEAD FREE PART NUMBER

SHELL	A±0.38	B±0.12	C±0.10	D±0.25	E±0.07	PART NUMBER
09	30.81	24.99	16.96	16.21	10.96	D09S24B.PV00LF
15	39.14	33.32	25.18	24.54	19.18	D15S24B.PV00LF
25	53.03	47.04	39.12	38.25	33.12	D25S24B.PV00LF
37	69.32	63.50	55.68	54.71	49.68	D37S24B.PV00LF

Protection: 4 --> flash AU
6 --> 0.76µ AU

GENERAL CHARACTERISTICS AND ROHS INFORMATIONS:
SEE DRAWING C01-8646-0000

www.fciconnect.com		surface ISO 1302 ✓	tolerance std ISO 406 ISO 1101	projection mm
TOLERANCES UNLESS OTHERWISE SPECIFIED				
Dr	LELEON	1992/09/16	ANGULAR	LINEAR
Eng	PESSON	1992/09/16	0.x	±0.1
Chr	LEGARE	1992/09/16	0.xx	±0.1
Appr	LEGARE	1992/09/16	0.xxx	±0.1
Product family			D-SUB	Spec ref -
title FEMALE CONNECTOR STD EURO			Rev. E	
straight solder type for			C01-8646-0123	
catalog no			CUSTOMER sheet 1 of 1	

European Views