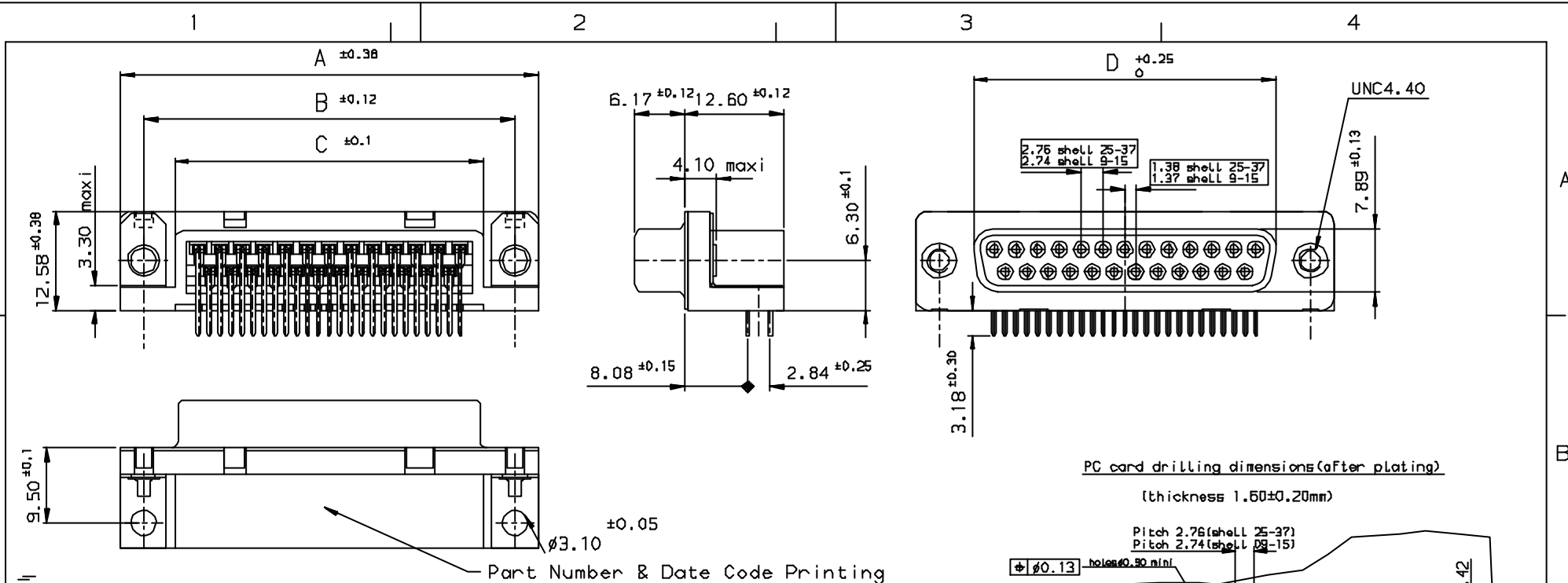


Tous droits strictement réservés. Reproduction ou communication à des tiers
interdite sans la permission écrite de la Direction des ventes et du marketing.
Property of FCI. Droits de reproduction FCI.

FCI

All rights strictly reserved. Reproduction or communication to third parties in any
form without the written permission of the Direction des ventes et du marketing.
Property of FCI. Copyright FCI.



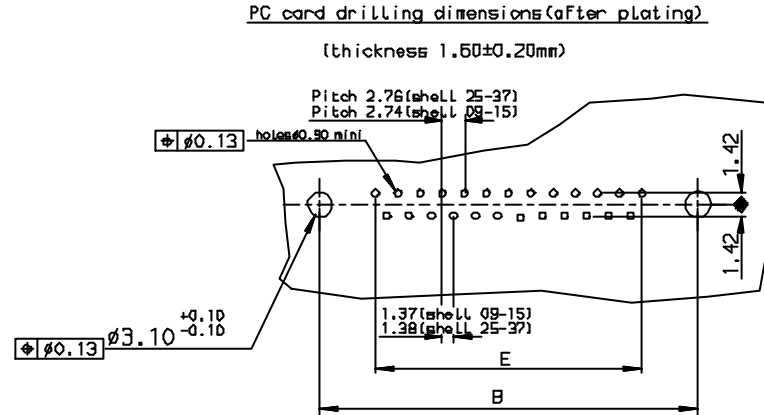
PART NUMBER									
SHELL	A±0.38	B±0.12	C±0.10	D±0.25	E±0.07	Plating: 0.75µ AU	Plating: Flash AU		
09	30.81	24.99	16.95	15.21	10.96	D09S33E6UX00**	D09S33E4UX00**		
15	39.14	33.32	25.18	24.54	19.18	D15S33E6UX00**	D15S33E4UX00**		
25	53.03	47.04	39.12	38.25	33.12	D25S33E6UX00**	D25S33E4UX00**		
37	69.32	63.50	55.68	54.71	49.68	D37S33E6UX00**	D37S33E4UX00**		

REQUIREMENTS

Technical characteristics:
Shell: steel tin plated
Insulators: self-extinguishing black polyster, ULClass94V0
Contacts size 20: phosphor bronze, gold 0.75µ on mating end, bright tin on termination end over nickel on entire contact
Cycles > 500 .

Metal plate for electrical continuity: brass, tin plated
Nuts: brass, tin plated
Electrical characteristics:
max. current rating: 5A
Test voltage: 1000V
Rated voltage: 300V
Contact resistance: ≤15mΩ
Shell resistance: ≤5mΩ
Insulation resistance: >5000MΩ
Climatic characteristics:
Operating temperature range: -55°C +125°C
Dimensions:
in accordance with MIL-C-24308

LF FOR LEAD FREE



FOR R0HS DETAILS REFER DWG. NO: C01-8646-0000

INDEX	DATE	REVISION DESCRIPTION
1	27/7/05	LEAD FREE DETAILS ADDED

Utr	Eon no	Dr	date
1	005-0124	JS	27/7/05

			✓	Tolerance LINEAR ±0.1 ANGULAR ±1°	Projection ⊕	MM
Dr JOHN SLEIBA	7/4/93	Product Family	D-SUB	Size	A3	Scale
Eng GEORGE VJ	7/4/93	Spec ref		ECN		
Chr GEORGE VJ	27/7/05	Material				
Appr K Somasundaram	27/7/05					
Title SOCKET CONNECT.DELTA D right angle with nut & metal plate			Dwg no C01-8646-0148	Rev. c		
Catalog no DELTA-D			CUSTOMER COPY		Sheet 1 of 1	