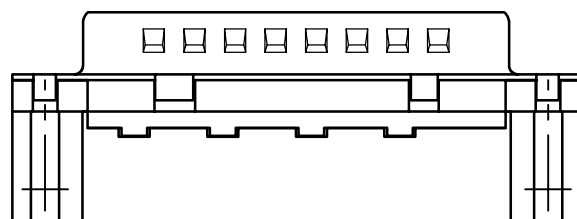
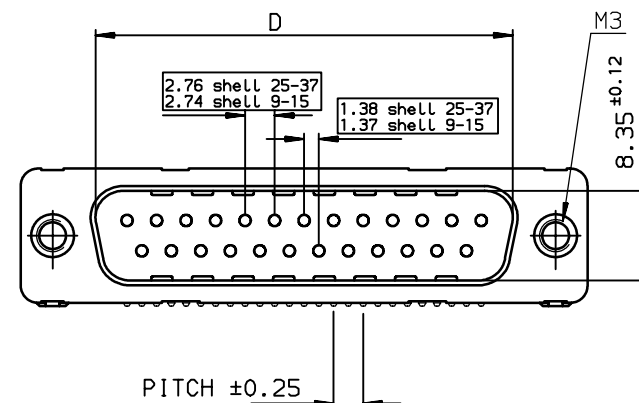
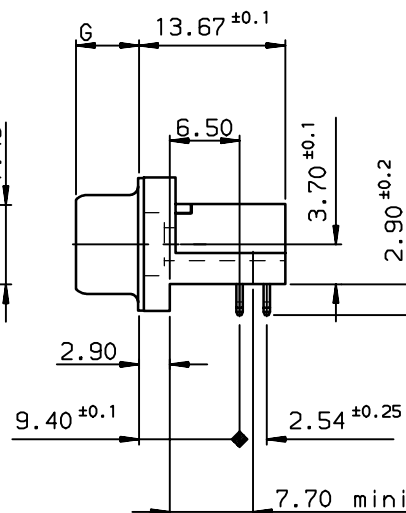
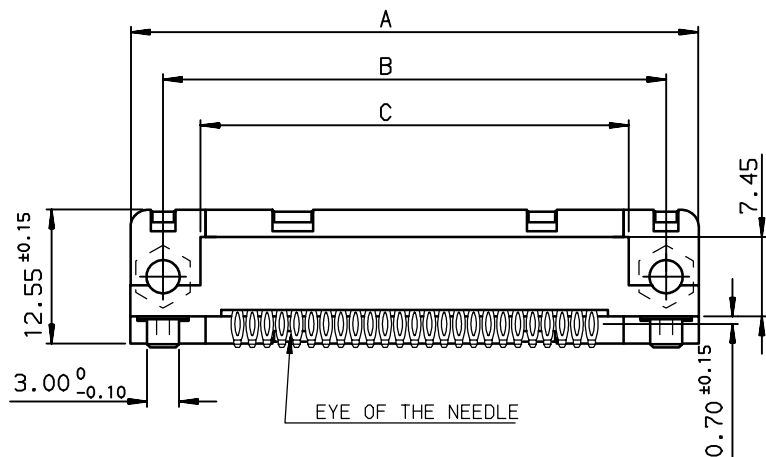
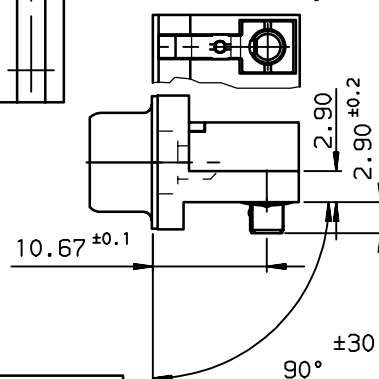
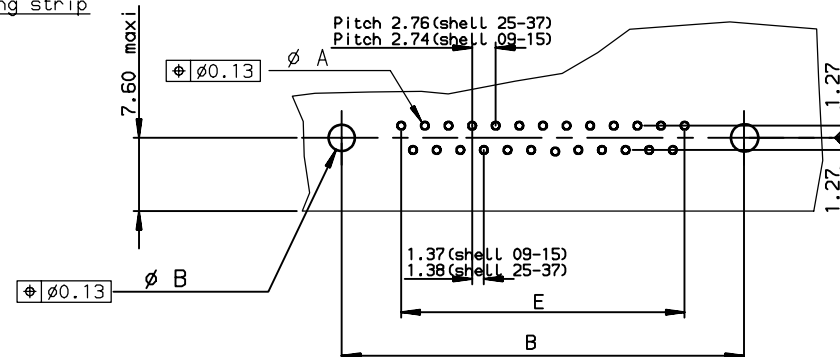


view shown without plastic pin



Detail of grounding strip

PC card drilling dimensions(after plating)
(thickness 1.60 or 2.40±0.20mm)

TIN LEAD PART NUMBER

SHELL	A±0.38	B±0.12	C±0.10	D ±0.25	E±0.07	G	PART NUMBER	PART NUMBER
09	30.81	24.99	18.00	16.79	10.96	5.90 ±0.15	D09P82C4GL00	D09P82C6GL00
15	39.14	33.32	26.32	25.12	19.18	5.90 ±0.15	D15P82C4GL00	D15P82C6GL00
25	53.03	47.04	40.04	38.84	33.12	5.70 ±0.25	D25P82C4GL00	D25P82C6GL00
37	69.32	63.50	56.50	55.30	49.68	5.70 ±0.25	D37P82C4GL00	D37P82C6GL00
Gold flash							0,76 µ gold	


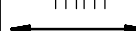

GENERAL CHARACTERISTICS AND ROHS INFORMATIONS:

SEE DRAWING C01-8646-0001

LEAD FREE PART NUMBER

SHELL	A±0.38	B±0.12	C±0.10	D ±0.25	E±0.07	G	PART NUMBER	PART NUMBER
09	30.81	24.99	18.00	16.79	10.96	5.90 ±0.15	D09P82C4GL00LF	D09P82C6GL00LF
15	39.14	33.32	26.32	25.12	19.18	5.90 ±0.15	D15P82C4GL00LF	D15P82C6GL00LF
25	53.03	47.04	40.04	38.84	33.12	5.70 ±0.25	D25P82C4GL00LF	D25P82C6GL00LF
37	69.32	63.50	56.50	55.30	49.68	5.70 ±0.25	D37P82C4GL00LF	D37P82C6GL00LF
Gold flash							0,76 µ gold	

rev	ecn no	dr	date
C	-	MAS	1999/07/23
D	LS05-004	MPE	2005/02/10
E	LS06-0095	LGO	2006/06/28
F	LS06-0140	LGO	2006/09/25
-	-	-	-
-	-	-	-
-	-	-	-

www.fciconnect.com			surface ISO 1302		tolerance std ISO 406 ISO 1101		projection 		mm 		
			TOLERANCES UNLESS OTHERWISE SPECIFIED								
Dr	PESSON	1995/08/07	ANGULAR	LINEAR	0.X		±0.1		size A3	Scale 2	
Eng	PESSON	1995/08/07			0.XX		±0.1				
Chr	LEGARE	1995/08/07			0.XXX		±0.1				
Appr	LEGARE	1995/08/07	0.XX ±2'		0.XXX		±0.1		ECN LS06-0140		
			Product family				D-SUB		Spec ref -		
			MALE CONNECTOR DELTA D EUROSTYLE				dwg no		C01-8646-0386		Rev.
			right angle press fit								F
catalog no			-				CUSTOMER		sheet 1 of 1		