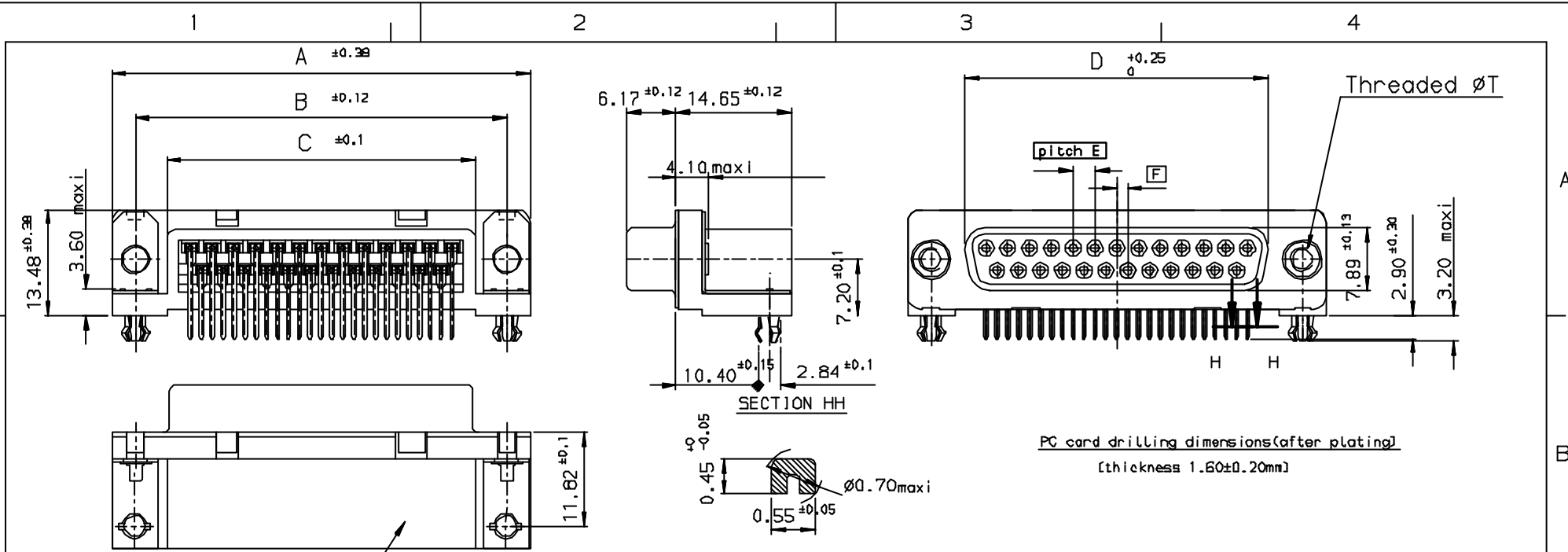


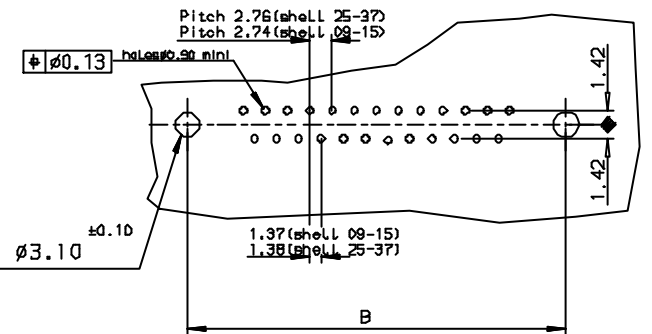
Tous droits strictement réservés. Reproduction ou communication a des tiers interdite sans autorisation écrite de la Direction des Conception. Propriété de FCI. Droits de reproduction FCI.

FCI

All rights strictly reserved. Reproduction or communication to third parties in any form without the written authorization of the Design Director is prohibited. Property of FCI. Copyright FCI.



PC card drilling dimensions (after plating)
[thickness 1.60±0.20mm]



Part Number & Date Code Printing

		PART NUMBER					LF FOR LEAD FREE		
SHELL	A±0.38	B±0.12	C±0.10	D±0.25	G±0.25	Plating: 0.75µ AU	Plating: Flash AU	Plating: 0.4µ AU	
09	30.81	24.99	16.96	16.21	5.90	D09S23A6G*00**	D09S23A4G*00**	D09S23A5G*00**	
15	39.14	33.32	25.18	24.54	5.90	D15S23A6G*00**	D15S23A4G*00**	D15S23A5G*00**	
25	53.03	47.04	39.12	38.25	5.70	D25S23A6G*00**	D25S23A4G*00**	D25S23A5G*00**	
37	69.32	63.50	55.68	54.71	5.70	D37S23A6G*00**	D37S23A4G*00**	D37S23A5G*00**	

Threaded ØT M3 = L
Threaded ØT 4.40 = X

REQUIREMENTS

Technical characteristics:

- Shell: steel tin plated
- Insulators: self-extinguishing black polyester, UL0 case 94V0
- Contacts size 20: phosphor bronze, gold on mating end, bright tin on termination and over nickel on entire contact
- Cycles: 500 For protection 5
200 For protection 4 and 5
- Harpoons: phosphor bronze, tin plated
- Metal plate for electrical continuity: brass, tin plated
- Nuts: brass, tin plated torque: 0.7Nm

Electrical characteristics:

- max. current rating: 15A
- Test voltage: 1000V
- Rated voltage: 300V
- Contact resistance: <15mΩ
- Shell resistance: <5mΩ
- Insulation resistance: >5000MΩ

Climatic characteristics:

- Operating temperature range: -55°C +125°C

Dimensions:

In accordance with MIL-C-24308

FOR ROHS DETAILS REFER DWG. NO: C01-8646-0000

Utr	Eon no	Dr	date
c	105-0124	JS	27/7/05

		Tolerance		Projection		MM	
		✓ LINEAR ±0.1		ANGULAR ±1°		← →	
Dr	JOHN ELEBA	29/5/08	Product Family	D-SUB	Size	A3	Scale
Eng	GEORGE VJ	29/5/08	Spec ref				
Chr	GEORGE VJ	27/7/05	Material		ECN		
Appr	K Somasundaram	27/7/05					
FCI	Title	SOCKET CONNECTOR DELTA D with nut , harpoon , metal bracket		Dwg no	C01-8646-0021		Rev.
	Catalog no	DELTA-D		CUSTOMER COPY			Sheet 1 of 1

INDEX	DATE	REVISION DESCRIPTION
c	27/7/05	LEAD FREE DETAILS ADDED