

A

B

C

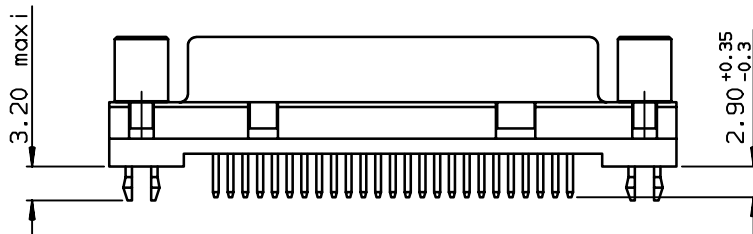
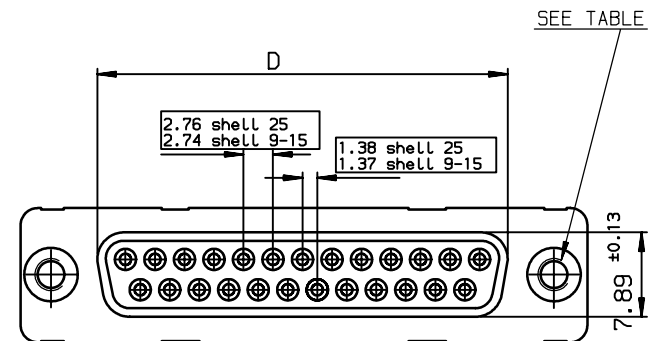
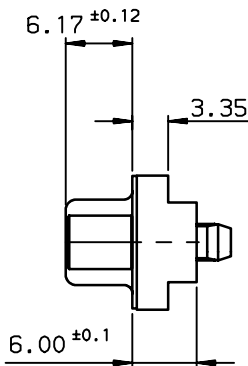
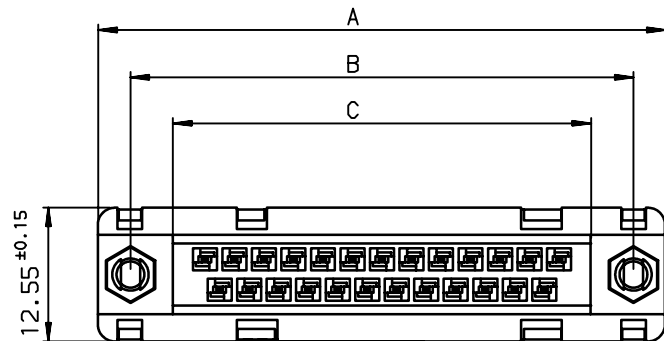
D

A

B

C

D



| SHELL | A ± 0.38 | B ± 0.12 | C ± 0.10 | D ± 0.25 | E ± 0.07 |
|-------|----------|----------|----------|----------|----------|
| 09 | 30.81 | 24.99 | 16.96 | 16.21 | 10.96 |
| 15 | 39.14 | 33.32 | 25.18 | 24.54 | 19.18 |
| 25 | 53.03 | 47.04 | 39.12 | 38.25 | 33.12 |
| 37 | 69.32 | 63.50 | 55.68 | 54.71 | 49.68 |

| SHELL | LEAD FREE PART NUMBER | TIN LEAD PART NUMBER | DESIGNATIONS |
|-------|-----------------------|----------------------|--|
| 09 | D09S24A6GV00LF | D09S24A6GV00 | RECEPTACLE 9 CTS STRAIGHT-SOLDER TO BOARD-PCB HARPOON-SCREWLOCK -ELEC.CONTIN. |
| 15 | D15S24A6GV00LF | D15S24A6GV00 | RECEPTACLE 15 CTS STRAIGHT-SOLDER TO BOARD-PCB HARPOON-SCREWLOCK -ELEC.CONTIN. |
| 25 | D25S24A6GV00LF | D25S24A6GV00 | RECEPTACLE 25 CTS STRAIGHT-SOLDER TO BOARD-PCB HARPOON-SCREWLOCK -ELEC.CONTIN. |
| 37 | D37S24A*GV00LF | D37S24A*GV00 | RECEPTACLE 37 CTS STRAIGHT-SOLDER TO BOARD-PCB HARPOON-SCREWLOCK -ELEC.CONTIN. |

V =SCREWLOCK Threaded UNC 4.40 sellers

4 = Performance Level PL3 ≥ 200 OPERATIONS

6 = Performance Level PL1 ≥ 500 OPERATIONS

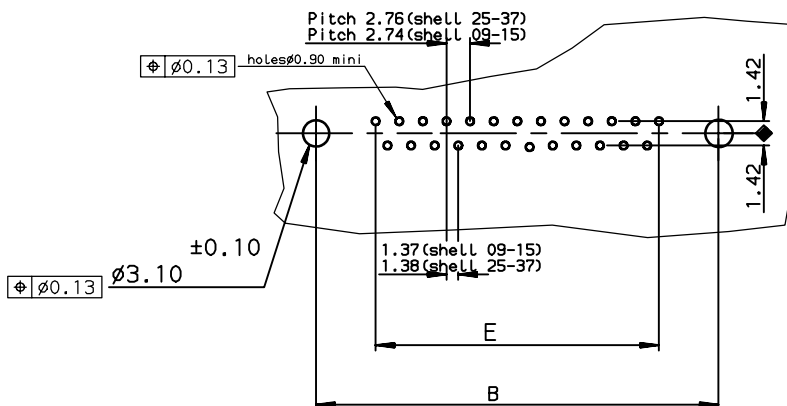
| SHELL | LEAD FREE PART NUMBER | TIN LEAD PART NUMBER | DESIGNATIONS |
|-------|-----------------------|----------------------|--|
| 09 | D09S24A*GI00LF | D09S24A*GI00 | RECEPTACLE 9 CTS STRAIGHT-SOLDER TO BOARD-PCB HARPOON-SCREWLOCK -ELEC.CONTIN. |
| 15 | D15S24A*GI00LF | D15S24A*GI00 | RECEPTACLE 15 CTS STRAIGHT-SOLDER TO BOARD-PCB HARPOON-SCREWLOCK -ELEC.CONTIN. |
| 25 | D25S24A*GI00LF | D25S24A*GI00 | RECEPTACLE 25 CTS STRAIGHT-SOLDER TO BOARD-PCB HARPOON-SCREWLOCK -ELEC.CONTIN. |
| 37 | D37S24A*GI00LF | D37S24A*GI00 | RECEPTACLE 37 CTS STRAIGHT-SOLDER TO BOARD-PCB HARPOON-SCREWLOCK -ELEC.CONTIN. |

I =SCREWLOCK Threaded M3

4 = Performance Level PL3 ≥ 200 OPERATIONS


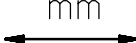
6 = Performance Level PL1 ≥ 500 OPERATIONS

PC card drilling dimensions(after plating)
(thickness 1.60±0.20mm)



GENERAL CHARACTERISTICS AND ROHS INFORMATIONS:
SEE DRAWING C01-8646-0000

European Views

| | | | | | | | | | | | | | | | |
|--------------------|--|------------|--|---------------------------------------|--|-----------------------------------|--|---|--|---|--|------------|--|--------------|--|
| www.fciconnect.com | | | | surface ISO 1302 | | tolerance std ISO 406 ISO 1101 | | projection  | | mm  | | | | | |
| | | | | TOLERANCES UNLESS OTHERWISE SPECIFIED | | | | | | | | | | | |
| Dr | | JOUBERT | | 2000/12/21 | | ANGULAR LINEAR | | 0.X | | ±0.1 | | size A3 | | Scale 2 | |
| Eng | | PESSON | | 2000/12/21 | | | | 0.XX | | ±0.1 | | | | | |
| Chr | | LEGARE | | 2000/12/21 | | | | 0.XXX | | ±0.1 | | | | | |
| Appr | | LEGARE | | 2000/12/21 | | Product family | | | | D-SUB | | Spec ref - | | | |
| rev | | ecn no | | dr | | date | | | | | | | | | |
| A | | - | | SJO | | 2000/12/21 | | | | | | | | | |
| B | | LS05-001 | | MPE | | 2005/03/14 | | | | | | | | | |
| C | | LS05-0056 | | LGO | | 2005/07/07 | | | | | | | | | |
| D | | LS06-0097 | | LGO | | 2006/07/28 | | | | | | | | | |
| - | | - | | - | | - | | | | | | | | | |
| - | | - | | - | | - | | | | | | | | | |
| - | | - | | - | | - | | | | | | | | | |
| - | | - | | - | | - | | | | | | | | | |
| FCI | | title | | RECEPTACLE STD EUROPE | | | | dwg no | | C01-8646-0815 | | | | Rev. | |
| | | | | STRAIGHT SOLDER TYPE FOR PCB 1.60mm | | | | | | | | | | D | |
| | | catalog no | | - | | | | | | CUSTOMER | | | | sheet 1 of 1 | |