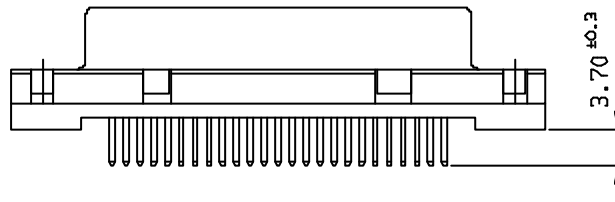
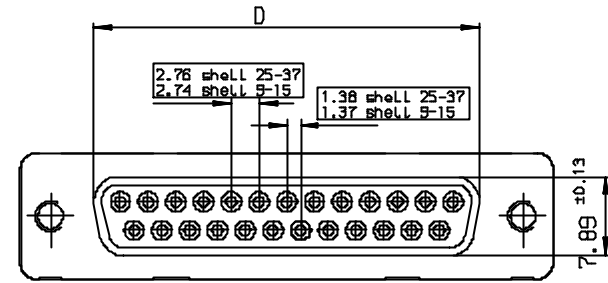
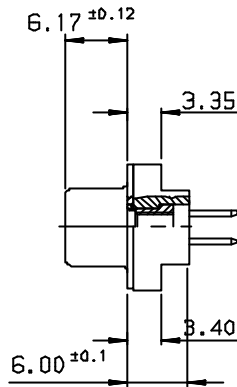
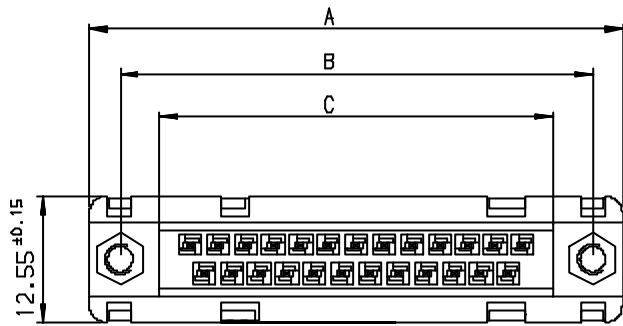
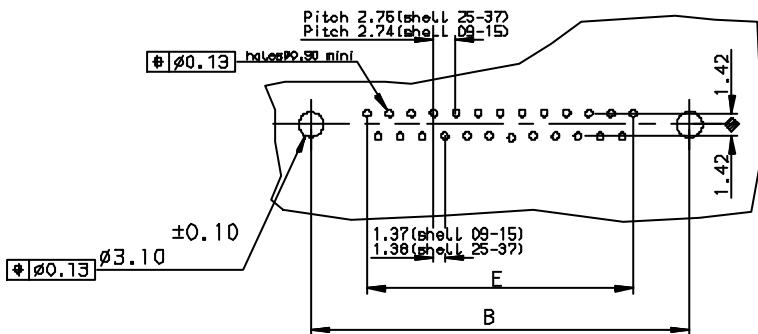


Copyright FCI



PC card drilling dimensions (after plating)
(thickness 2.40±0.20mm)



GENERAL CHARACTERISTICS AND ROHS INFORMATIONS:
SEE DRAWING C01-8646-0000

TIN LEAD PART NUMBER

SHELL	A±0.38	B±0.12	C±0.10	D±0.25	E±0.07	PART NUMBER
09	30.81	24.99	16.96	16.21	10.96	D09S24B.PL00
15	39.14	33.32	25.18	24.54	19.18	D15S24B.PL00LF
25	53.03	47.04	39.12	38.25	33.12	D25S24B.PL00
37	69.32	63.50	55.68	54.71	49.68	D37S24B.PL00

Plating: 4 --> flash AU
Plating: 6 --> 0.76µ AU

LEAD FREE PART NUMBER

SHELL	A±0.38	B±0.12	C±0.10	D±0.25	E±0.07	PART NUMBER
09	30.81	24.99	16.96	16.21	10.96	D09S24B.PL00LF
15	39.14	33.32	25.18	24.54	19.18	D15S24B.PL00LF
25	53.03	47.04	39.12	38.25	33.12	D25S24B.PL00LF
37	69.32	63.50	55.68	54.71	49.68	D37S24B.PL00LF

Plating: 4 --> flash AU
Plating: 5 --> 0.75µ AU

rev	con no	in	date
B	-	JOU	1996/09/09
C	L505-001	NPE	2005/03/10
D	L505-0095	LGO	2006/05/19
-	-	-	-
-	-	-	-
-	-	-	-

www.fciconnect.com		surface ISO 1302 ✓	tolerance std ISO 406 ISO 1101	projection mm
Dr LELEON 1992/09/16		TOLERANCES UNLESS OTHERWISE SPECIFIED		size A3
Eng PESSON 1992/09/16	ANGULAR	LINEAR	0.X ±0.1	Scale 2
Chr LEGARE 1992/09/16	0.XX ±0.1	0.XXX ±0.1	ECN L505-0095	
Appr LEGARE 1992/09/16	Product Family	D-SUB	Spec ref -	
FCI logo		FEMALE CONNECTOR STD EUROPE		Rev. D
straight solder type for PCB 2.40mm		C01-8646-0121		
catalog no -		CUSTOMER sheet 1 of 1		