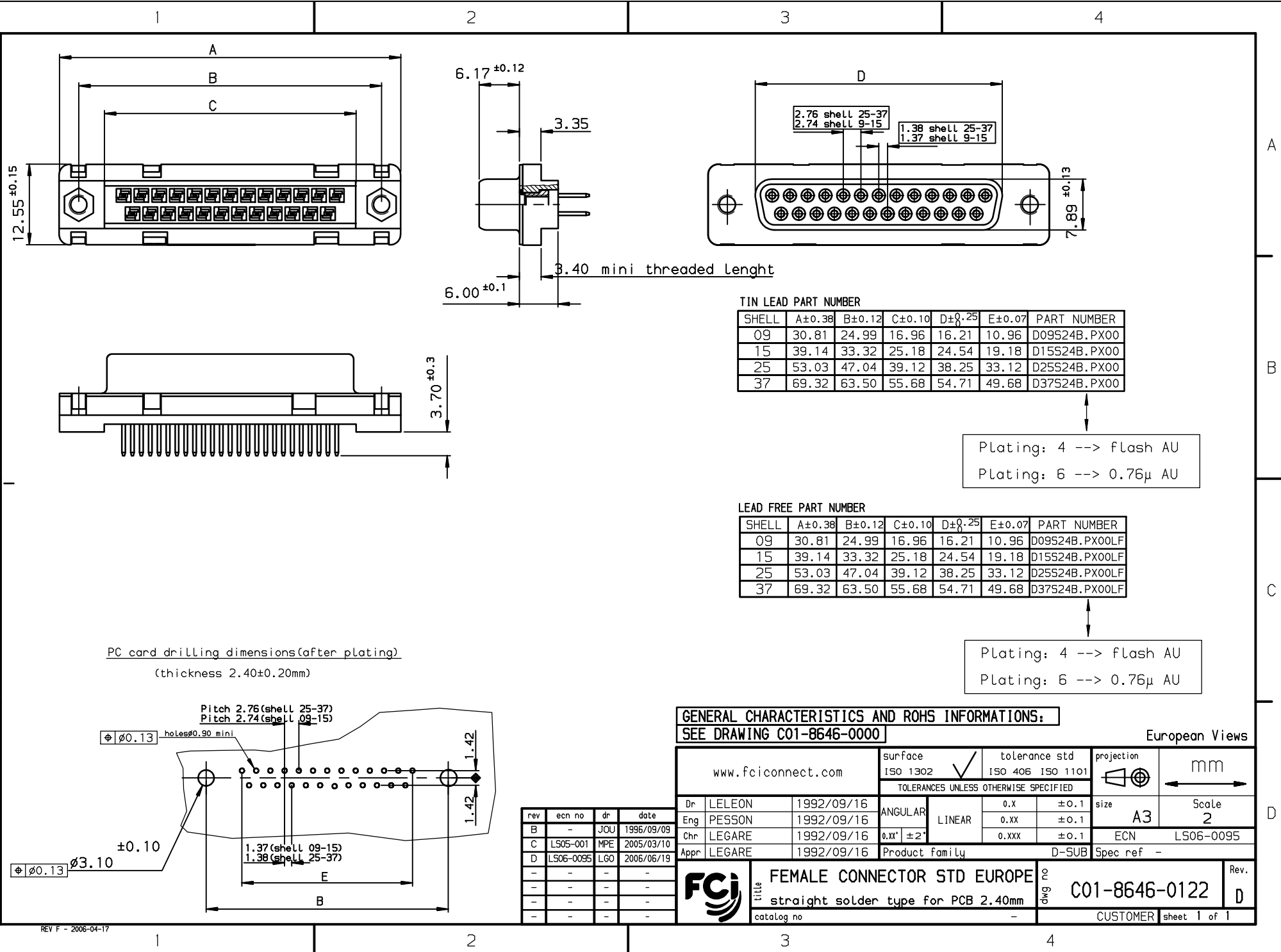




Copyright FCI.



TIN LEAD PART NUMBER

SHELL	A±0.38	B±0.12	C±0.10	D±0.25	E±0.07	PART NUMBER
09	30.81	24.99	16.96	16.21	10.96	D09S24B.PX00
15	39.14	33.32	25.18	24.54	19.18	D15S24B.PX00
25	53.03	47.04	39.12	38.25	33.12	D25S24B.PX00
37	69.32	63.50	55.68	54.71	49.68	D37S24B.PX00

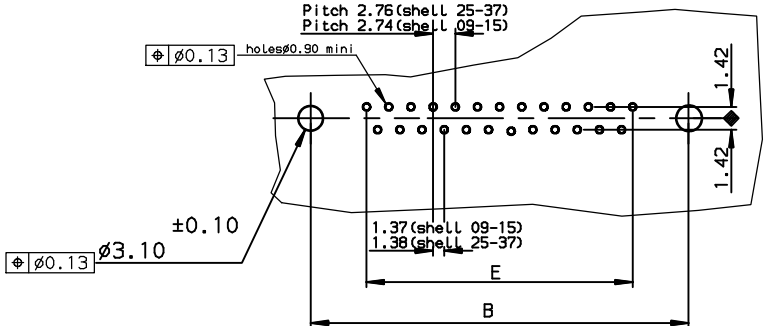
Plating: 4 --> flash AU
Plating: 6 --> 0.76µ AU

LEAD FREE PART NUMBER

SHELL	A±0.38	B±0.12	C±0.10	D±0.25	E±0.07	PART NUMBER
09	30.81	24.99	16.96	16.21	10.96	D09S24B.PX00LF
15	39.14	33.32	25.18	24.54	19.18	D15S24B.PX00LF
25	53.03	47.04	39.12	38.25	33.12	D25S24B.PX00LF
37	69.32	63.50	55.68	54.71	49.68	D37S24B.PX00LF

Plating: 4 --> flash AU
Plating: 6 --> 0.76µ AU

PC card drilling dimensions(after plating)
(thickness 2.40±0.20mm)



GENERAL CHARACTERISTICS AND ROHS INFORMATIONS:
SEE DRAWING C01-8646-0000

www.fciconnect.com		surface ISO 1302 ✓	tolerance std ISO 406 ISO 1101	projection mm
TOLERANCES UNLESS OTHERWISE SPECIFIED				
Dr	LELEON	1992/09/16	0.x	±0.1
Eng	PESSON	1992/09/16	0.xx	±0.1
Chr	LEGARE	1992/09/16	0.xxx	±0.1
Appr	LEGARE	1992/09/16	Product family D-SUB Spec ref -	
title FEMALE CONNECTOR STD EUROPE straight solder type for PCB 2.40mm			Rev. D	
catalog no			C01-8646-0122	
			CUSTOMER sheet 1 of 1	

rev	ecn no	dr	date
B	-	JOU	1996/09/09
C	LS05-001	MPE	2005/03/10
D	LS06-0095	LGO	2006/06/19
-	-	-	-
-	-	-	-
-	-	-	-

REV F - 2006-04-17