

A

B

C

D

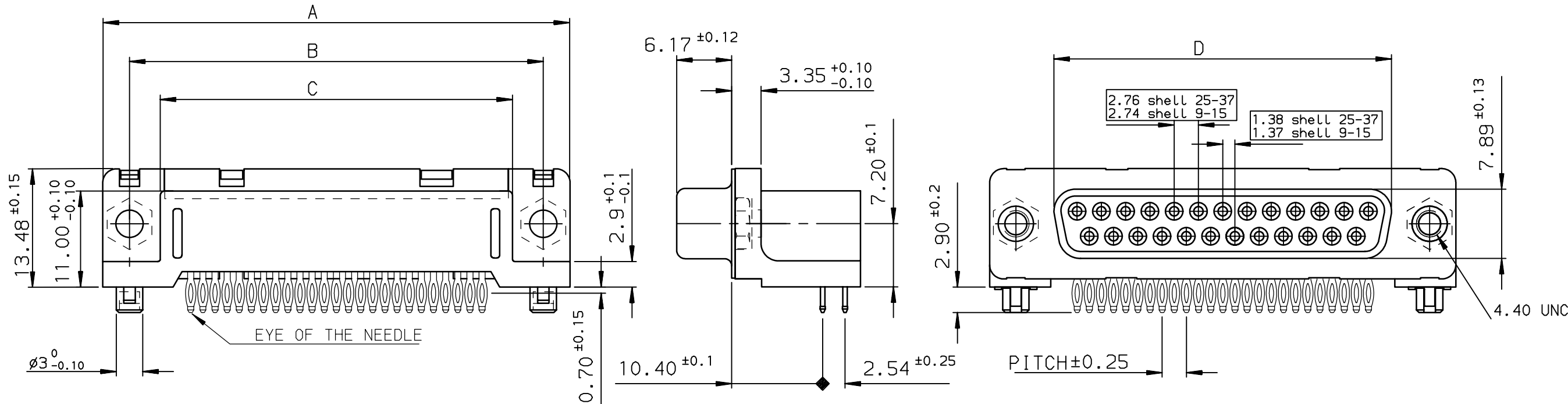
A

B

C

D

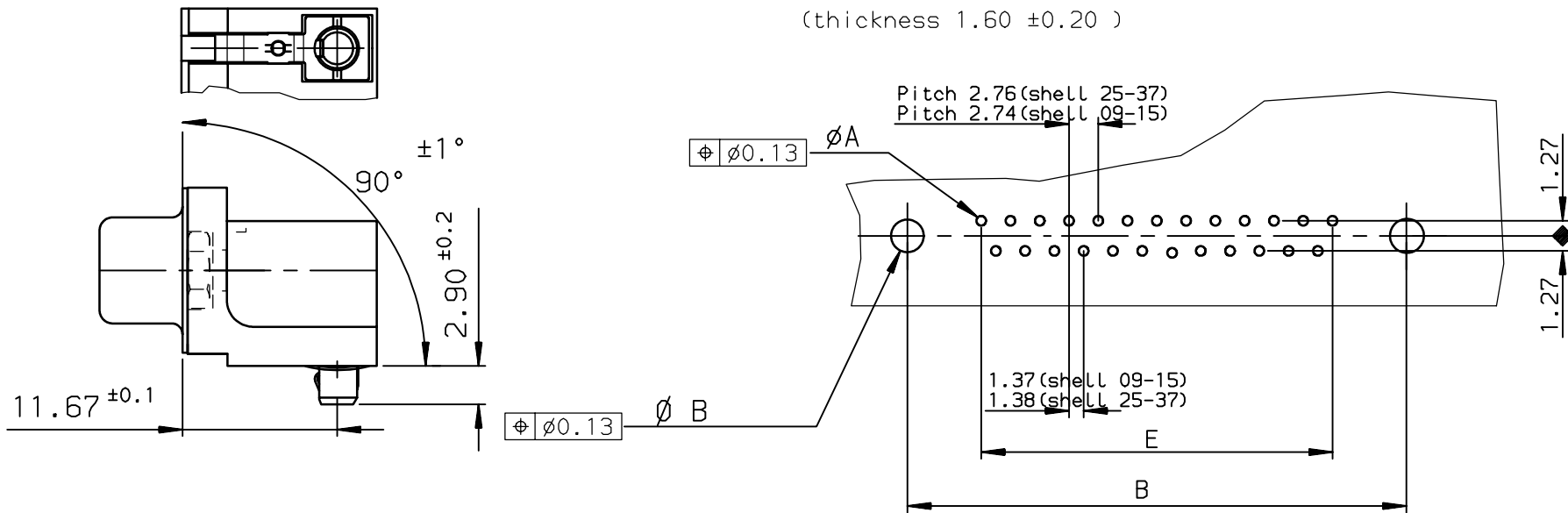
view shown without plastic pin and grounding



Detail of grounding strip

PC card drilling dimensions(after plating)

(thickness 1.60 ±0.20 )



TIN LEAD PART NUMBER

SHELL	A±0.38	B±0.12	C±0.10	D±0.25	E±0.07	PART NUMBER	PART NUMBER
09	30.81	24.99	18.00	16.21	10.96	D09S81C4GX00	D09S81C6GX00
15	39.14	33.32	26.32	24.54	19.18	D15S81C4GX00	D15S81C6GX00
25	53.03	47.04	40.04	38.25	33.12	D25S81C4GX00	D25S81C6GX00
37	69.32	63.50	56.50	54.71	49.68	D37S81C4GX00	D37S81C6GX00
						Gold flash	0,76 µ gold

LEAD FREE PART NUMBER




SHELL	A±0.38	B±0.12	C±0.10	D±0.25	E±0.07	PART NUMBER	PART NUMBER
09	30.81	24.99	18.00	16.21	10.96	D09S81C4GX00LF	D09S81C6GX00LF
15	39.14	33.32	26.32	24.54	19.18	D15S81C4GX00LF	D15S81C6GX00LF
25	53.03	47.04	40.04	38.25	33.12	D25S81C4GX00LF	D25S81C6GX00LF
37	69.32	63.50	56.50	54.71	49.68	D37S81C4GX00LF	D37S81C6GX00LF
						Gold flash	0,76 µ gold

rev	ecn no	dr	date
F	-	JOU	2000/09/07
G	LS05-004	MPE	2005/02/14
H	LS06-0097	LGO	2006/07/28
J	LS06-0140	LGO	2006/09/22
-	-	-	-
-	-	-	-
-	-	-	-

GENERAL CHARACTERISTICS AND ROHS INFORMATIONS:

SEE DRAWING C01-8646-0001

European Views

www.fciconnect.com			surface ISO 1302		tolerance std ISO 406 ISO 1101		projection 		mm 	
			TOLERANCES UNLESS OTHERWISE SPECIFIED							
Dr	PESSON	1996/11/06	ANGULAR  0.XX' ±2°	LINEAR	0.X	±0.1	size  A3	Scale  2		
Eng	PESSON	1996/11/06			0.XX	±0.1				
Chr	LEGARE	1996/11/06			0.XXX	±0.1				
Appr	LEGARE	1996/11/06	Product family				D-SUB	ECN LS06-0140 Spec ref -		
			FEMALE CONNECTOR DELTA D EUROPE				dwg no  C01-8646-0514		Rev.  J	
			right angled press fit							
catalog no				-		CUSTOMER		sheet 1 of 1		