

1

2

3

4

view shown without grounding and plastic pin

A

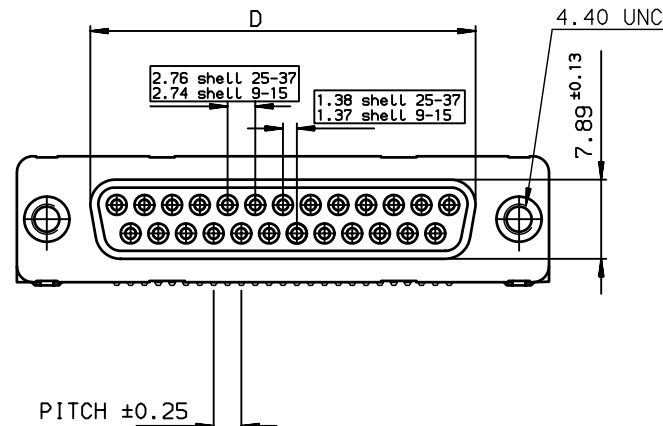
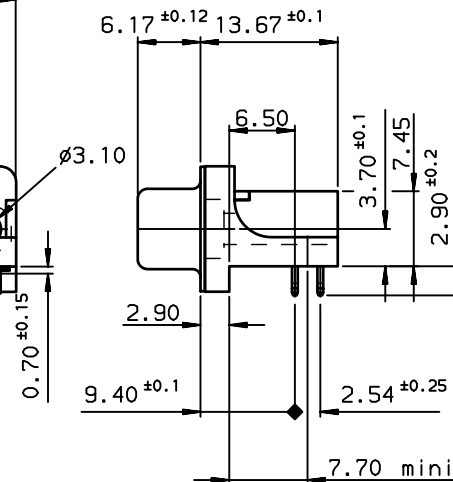
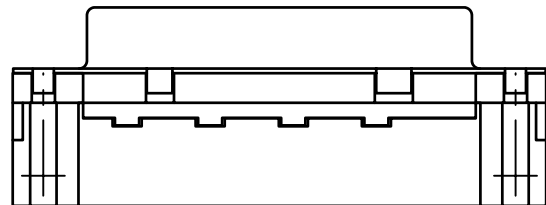
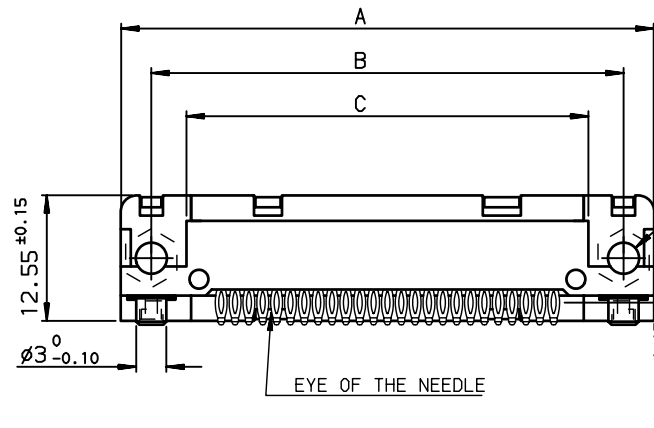
B

C

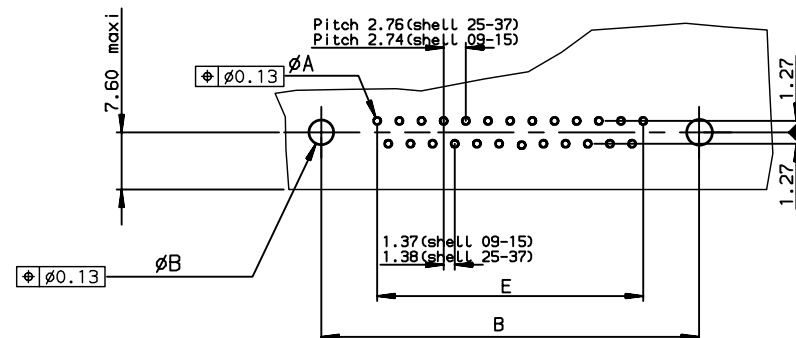
A

B

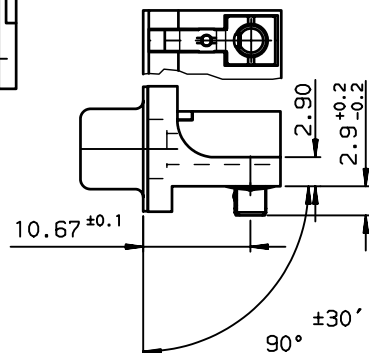
C



PC card drilling dimensions(after plating)
(thickness 1.60 ±0.25 mm)



Detail of grounding strip



GENERAL CHARACTERISTICS AND ROHS INFORMATIONS:

SEE DRAWING C01-8646-0001

European Views

TIN LEAD PART NUMBER

SHELL	A±0.38	B±0.12	C±0.10	D±0.25	E±0.07	PART NUMBER	PART NUMBER
09	30.81	24.99	18.00	16.21	10.96	D09S82C4GX00	D09S82C6GX00
15	39.14	33.32	26.32	24.54	19.18	D15S82C4GX00	D15S82C6GX00
25	53.03	47.04	40.04	38.25	33.12	D25S82C4GX00	D25S82C6GX00
37	69.32	63.50	56.50	54.71	49.68	D37S82C4GX00	D37S82C6GX00
						Gold flash	0,76 µ gold

LEAD FREE PART NUMBER

SHELL	A±0.38	B±0.12	C±0.10	D±0.25	E±0.07	PART NUMBER	PART NUMBER
09	30.81	24.99	18.00	16.21	10.96	D09S82C4GX00LF	D09S82C6GX00LF
15	39.14	33.32	26.32	24.54	19.18	D15S82C4GX00LF	D15S82C6GX00LF
25	53.03	47.04	40.04	38.25	33.12	D25S82C4GX00LF	D25S82C6GX00LF
37	69.32	63.50	56.50	54.71	49.68	D37S82C4GX00LF	D37S82C6GX00LF
						Gold flash	0,76 µ gold

rev	ecn no	dr	date
F	-	MAS	1999/07/23
G	LS05-004	MPE	2005/02/08
H	LS06-0095	LGO	2006/06/28
J	LS06-0140	LGO	2006/09/22
K	LS07-0168	MPE	2007/06/15
-	-	-	-
-	-	-	-

www.fciconnect.com		surface ISO 1302 ✓	tolerance std ISO 406 ISO 1101	projection mm
		TOLERANCES UNLESS OTHERWISE SPECIFIED		
Dr	PESSON	1994/10/20	ANGULAR	0.X ±0.1
Eng	PESSON	1994/10/20	LINEAR	0.XX ±0.1
Chr	LEGARE	1994/10/20	0.XX' ±2°	0.XXX ±0.1
Appr	LEGARE	1994/10/20	Product family	D-SUB
FCj		FEMALE CONNECTOR DELTA D EUROSTYLE		size A3
right angle press fit		ECN		LS07-0168
catalog no		CUSTOMER		sheet 1 of 1
title		C01-8646-0319		Rev. K

REV F - 2006-04-17

1

2

3

4