

1

2

3

4

A

B

C

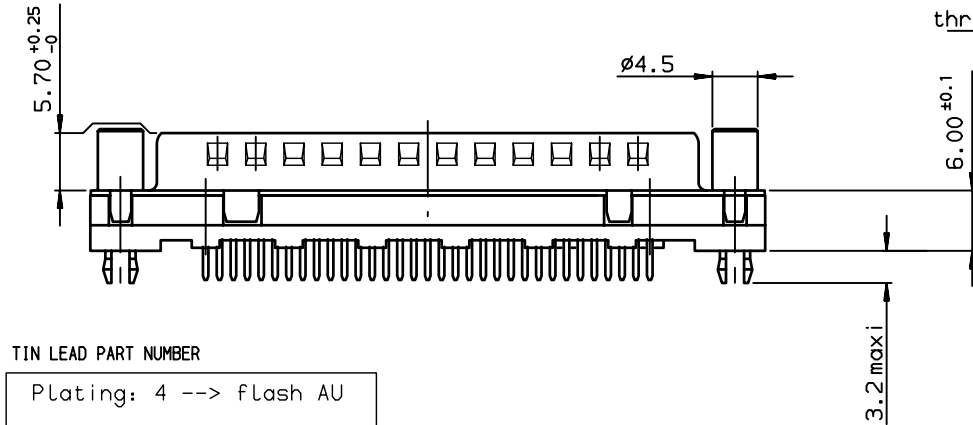
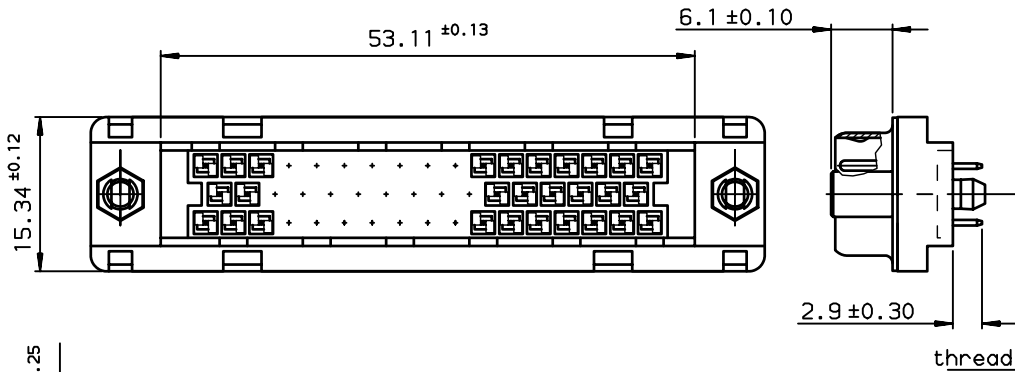
D

A

B

C

D



TIN LEAD PART NUMBER

Plating: 4 --> flash AU
Plating: 6 --> 0.76µ AU

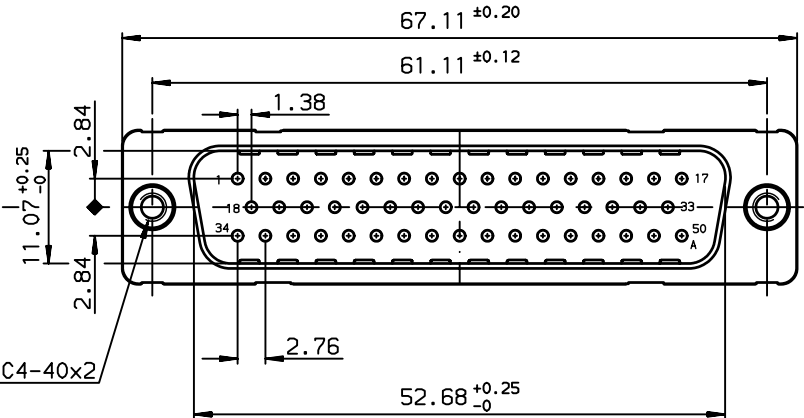
Part number D50P24A*GV00

LEAD FREE PART NUMBER

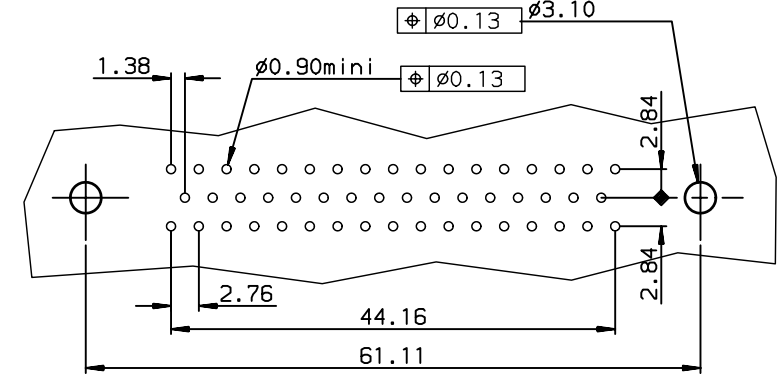
Plating: 4 --> flash AU
Plating: 6 --> 0.76µ AU

Part number D50P24A*GV00LF




rev	ecn no	dr	date
B	-	MPE	1996/11/14
C	LS05-001	MPE	2005/03/10
D	LS06-0095	LGO	2006/06/28
-	-	-	-
-	-	-	-
-	-	-	-
-	-	-	-



PC card drilling dimensions
(after plating - thickness: 1.60 mm)



GENERAL CHARACTERISTICS AND ROHS INFORMATIONS:
SEE DRAWING C01-8646-0000

www.fciconnect.com			surface ISO 1302		tolerance std ISO 406 ISO 1101		projection 		mm 		
			TOLERANCES UNLESS OTHERWISE SPECIFIED								
Dr	PESSON	1995/08/08	ANGULAR	LINEAR	0.X	±0.1	size A3	Scale 2			
Eng	PESSON	1995/08/08			0.XX	±0.1					
Chr	LEGARE	1995/08/08			0.XXX	±0.1					
Appr	LEGARE	1995/08/08	Product family				D-SUB	ECN LS06-0095 Spec ref -			
			title MALE CONNECTOR DELTA D 50-EUROPE				dwg no C01-8646-0359	Rev. D			
			straight solder, harpoon, screwlock								
			catalog no -					CUSTOMER sheet 1 of 1			

REV F - 2006-04-17

1

2

3

4

Copyright FCI.
FCI