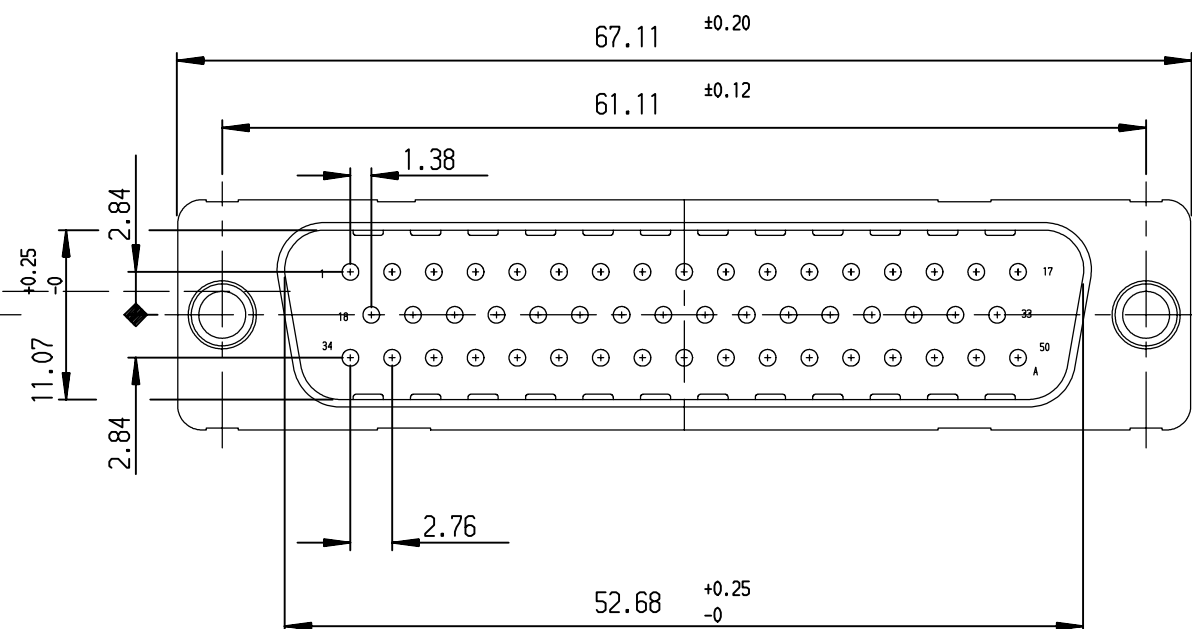
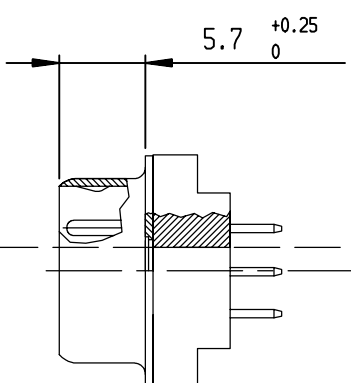
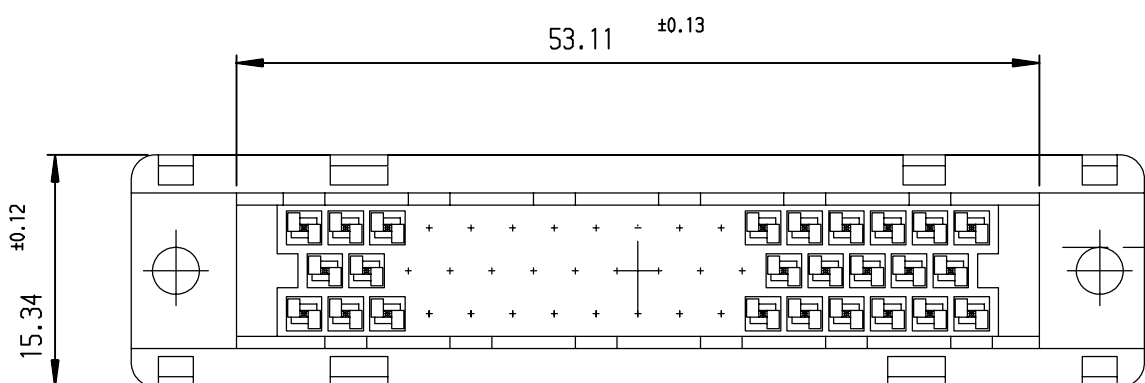


1

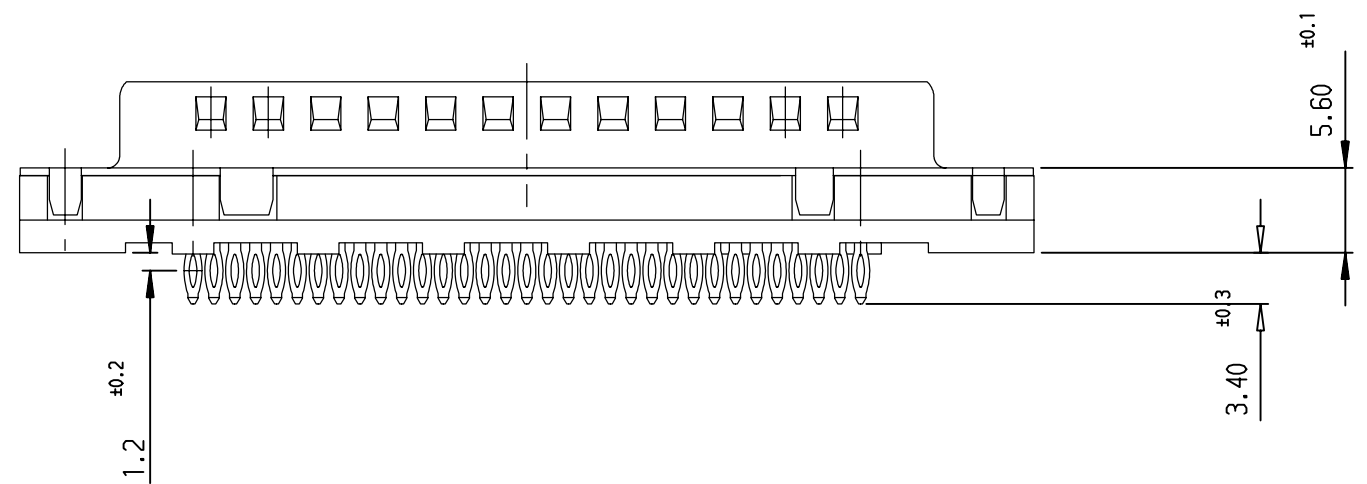
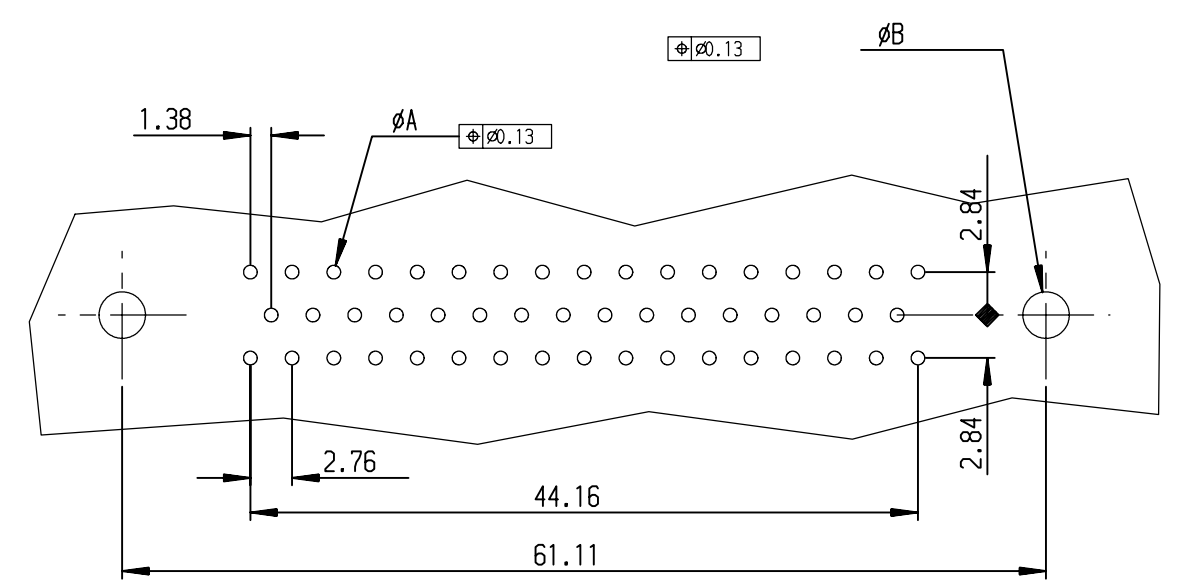
2

3

4



PC board drilling dimensions  
(after plating - thickness: 1.60 to 3.20 mm)



**REQUIREMENTS**

Technical characteristics:  
 Shell: steel tin plated  
 Insulators: self-extinguishing thermoplastic, UL class 94V0  
 Contacts: phosphor bronze, gold (for thickness see table)  
 over 2µ mini nickel on active area and flash to 1.5µ maxi SnPb over  
 1µ mini nickel on termination  
 Cycles: 200 min for plating 4  
 :500 min for plating 6

Accessories:  
 Without accessories: round hole dia 3.10 mm

Electrical characteristics:  
 max. current rating: 5A  
 Test voltage: 1000V  
 Rated voltage: 300V  
 Contact resistance: <10mΩ  
 Shell resistance: <5mΩ  
 Insulation resistance: >5000MΩ

Climatic characteristics:  
 Operating temperature range: -55°C +125°C

Dimensions:  
 in accordance with MIL-C-24308B and DIN41652

PART NUMBER	
Flash gold	D50P90C4PA00
0.76µ gold	D50P90C6PA00

PCB HOLE DEFINITION		
-	ØA	ØB
DRILLED HOLE	Ø1.15±0.03	Ø3.22±0.03
COPPER PLATING	25µ mini	
TIN-LEAD PLATING	5µ mini	
FINISHED HOLE AFTER REFLOW	Ø0.94-1.09	Ø3.02-3.20

rev	ecn no	dr	date
A	-	JOU	1997/10/20
B	LS06-0140	LGO	2006/09/22
-	-	-	-
-	-	-	-
-	-	-	-
-	-	-	-

Part number	SEE TABLE
-------------	-----------

www.fciconnect.com		surface ISO 1302 ✓	tolerance std ISO 406 ISO 1101	projection	mm
		TOLERANCES UNLESS OTHERWISE SPECIFIED		size A3	Scale 2.0
Dr	JOUBERT	1997/10/20	ANGULAR	0.X ±0.1	ECN LS06-0140
Eng	PESSON	1997/10/20	LINEAR	0.XX ±0.1	
Chr	LEGARE	1997/10/20	0.XX' ±2°	0.XXX ±0.1	Spec ref -
Appr	LEGARE	1997/10/20	Product family D-SUB		
		<b>MALE CONNECTOR DELTA LOW PROFIL</b> straight press fit		dwg no <b>C01-8646-0581</b>	Rev. <b>B</b>
catalog no		-		CUSTOMER sheet 1 of 1	



Copyright FCI. FCI