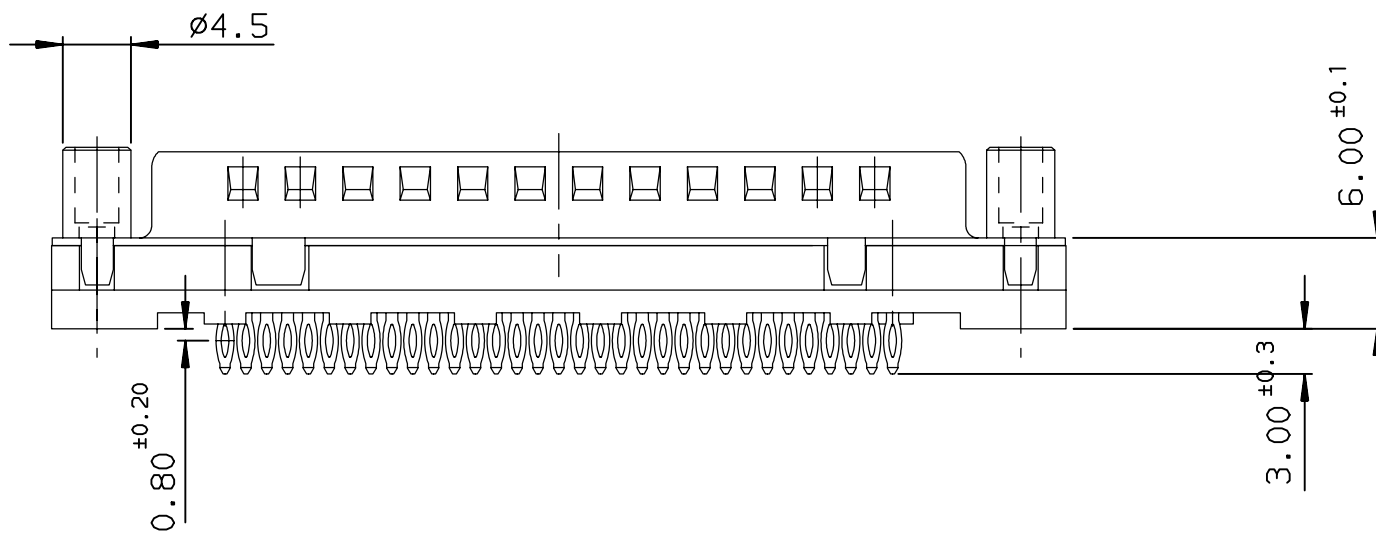
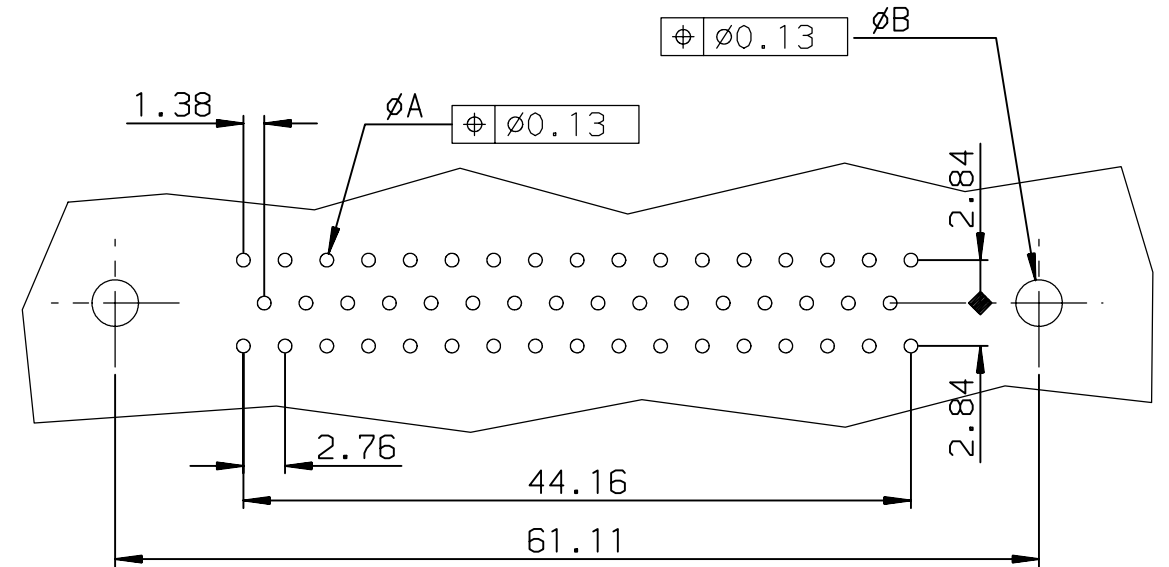


PC board drilling dimensions
(after plating - thickness: 1.60 to 3.20 mm)



REQUIREMENTS

Technical characteristics:

Shell: steel tin plated

Insulators: self-extinguishing thermoplastic, UL class 94V0

Contacts: phosphor bronze, gold (for thickness see table)

over 2µ mini nickel on active area and flash to 1.5µ maxi SnPb over

1µ mini nickel on termination

Cycles: 200 min for plating 4

: 500 min for plating 6

Accessories:

Female screwlock: brass, tin plated, UNC 4.40

retention against torque 0.70N.m minimum

Electrical characteristics:

max. current rating: 5A

Test voltage: 1000V

Rated voltage: 300V

Contact resistance: ≤10mΩ

Shell resistance: ≤5mΩ

Insulation resistance: ≥5000MΩ

Climatic characteristics:

Operating temperature range: -55°C +125°C

Dimensions:

in accordance with MIL-C-24308B and DIN41652

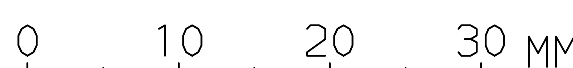
PART NUMBER	
flash gold	D50P91C4PV00
0.76µ gold	D50P91C6PV00

PCB HOLE DEFINITION		
	ØA	ØB
DRILLED HOLE	Ø1.15±0.03	Ø3.22±0.03
COPPER PLATING	25µ mini	
TIN-LEAD PLATING	5µ mini	
FINISHED HOLE AFTER REFLOW	Ø0.94-1.09	Ø3.02-3.20

rev	ecn no	dr	date
A	-	JOU	1996/08/08
B	LS06-0140	LGO	2006/09/23
-	-	-	-
-	-	-	-
-	-	-	-
-	-	-	-

Part number	SEE TABLE
-------------	-----------

www.fciconnect.com		surface ISO 1302	tolerance std ISO 406 ISO 1101	projection mm
		TOLERANCES UNLESS OTHERWISE SPECIFIED		
Dr	JOUBERT	1996/08/08	ANGULAR	0.X ±0.1
Eng	PESSON	1996/08/08	LINEAR	0.XX ±0.1
Chr	LEGARE	1996/08/08	0.XX' ±2'	0.XXX ±0.1
Appr	LEGARE	1996/08/08	Product family	D-SUB
title MALE CONNECTOR DELTA D 50-EUROPE		spec ref		size A3
straight press fit-female 4-40 screw		D-SUB		Scale 2
catalog no		CUSTOMER		LS06-0140
		sheet 1 of 1		Rev. B



Copyright FCI.