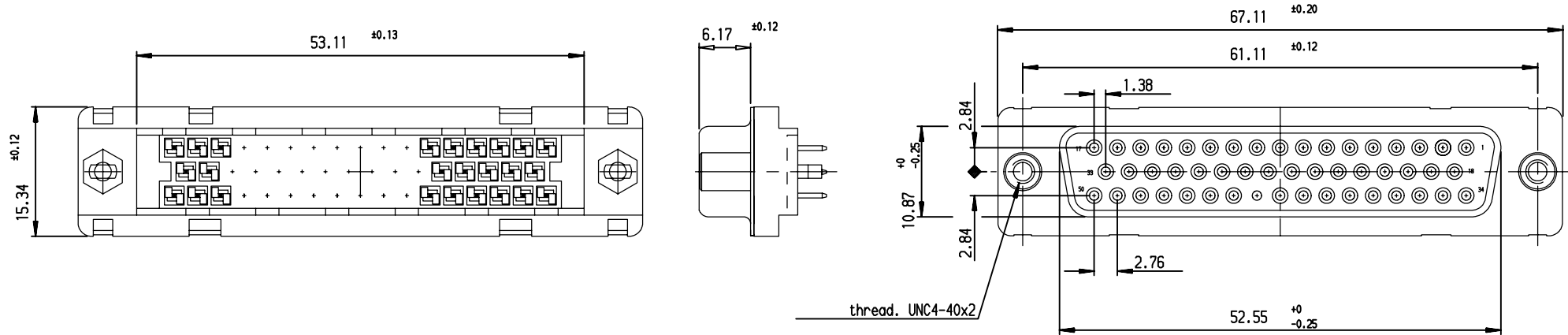


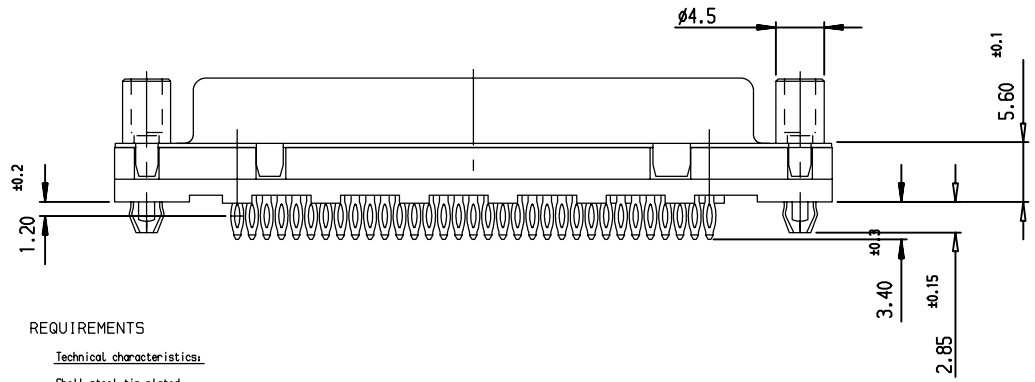
A

A

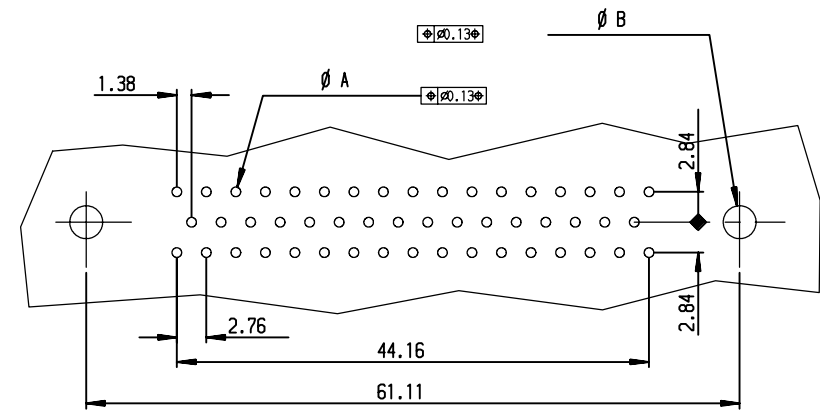


B

B



PC board drilling dimensions
(after plating - thickness: 1.60 mm)



REQUIREMENTS

Technical characteristics:

- Shell: steel tin plated
- Insulators: self-extinguishing thermoplastic, UL class 94V0
- Contacts: phosphor bronze, gold (for thickness see table)
over 2µ mini nickel on active area and flash to 1.5µ maxi SnPb over
- 1µ mini nickel on termination
- Cycles: 200 min for plating 4
:500 min for plating 6
- Gauge retention force: 0.20 N mini

Accessories:

Female screwlock with harpoon: tin plated, UNC 4.40
retention against torque 0.70N.m minimum

Electrical characteristics:

- max. current rating: 5A
- Test voltage: 1000V
- Rated voltage: 300V
- Contact resistance: <10ma
- Shell resistance: <5ma
- Insulation resistance: >5000MΩ

Climatic characteristics:

Operating temperature range: -55°C +125°C

Dimensions:

in accordance with MIL-C-24308B and DIN41652

PART NUMBER	
Flash gold	D50S90C4GV00
0.75µ gold	D50S90C6GV00

PCB HOLE DEFINITION		
	βA	βB
DRILLED HOLE	β1: 1.94±0.03	β2: 2.24±0.03
COPPER PLATING	2µ mini	
TIN-LEAD PLATING	5µ mini	
FINISHED HOLE AFTER REFLOW	β0: 94±1.00	β0: 92±3.20



Part number	SEE TABLE
-------------	-----------

European Views

www.fciconnect.com		surface ISO 1302	tolerance std ISO 406 ISO 1101	projection	mm
TOLERANCES UNLESS OTHERWISE SPECIFIED					
Dr	LENOIR	1994/06/24	0.X	±0.1	size A3
Eng	LENOIR	1994/06/24	0.XX	±0.1	Scale 2
Chr	LEGARE	1994/06/24	0.XX' ±2'	0.XXX	±0.1
Appr	LEGARE	1994/06/24	Product family		D-SUB
					ECN L506-0140
					Spec ref -

rev	ecn no	dr	date
D	-	MLE	1996/07/25
E	L506-0140	LGO	2006/09/25
-	-	-	-
-	-	-	-
-	-	-	-
-	-	-	-

	FEMALE CONECTOR DELTA D 50-LOW PROFIL straight press fit, female 4-40 screw		title C01-8646-0259	Rev. E
	catalog no -			



Copyright FCI.

D

D