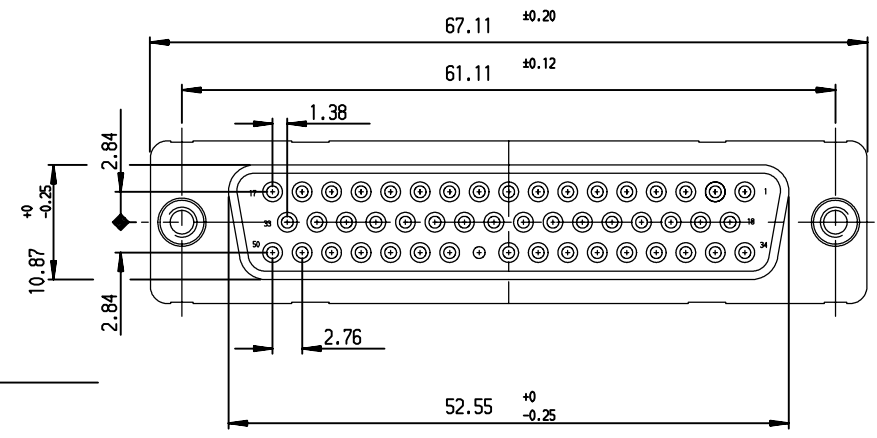
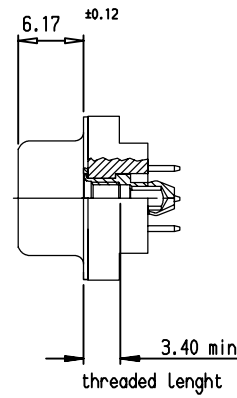
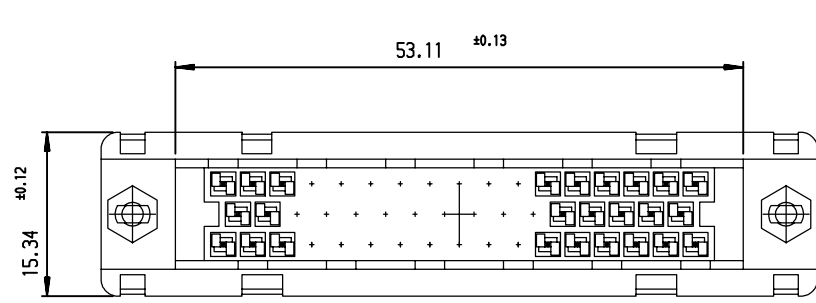
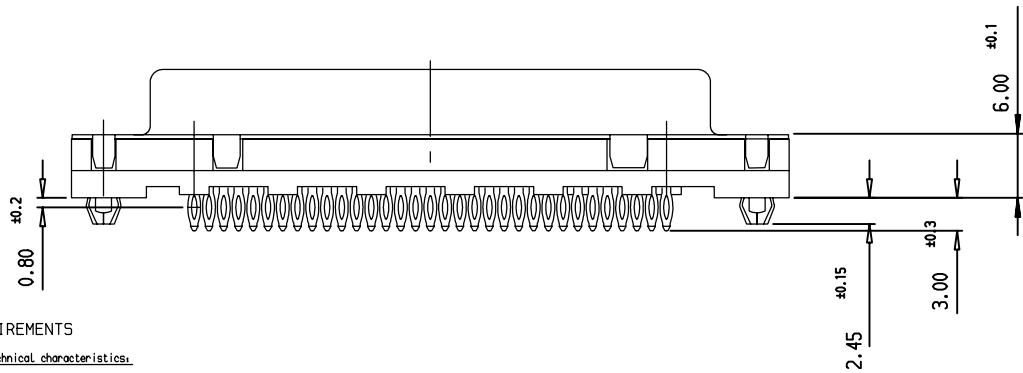


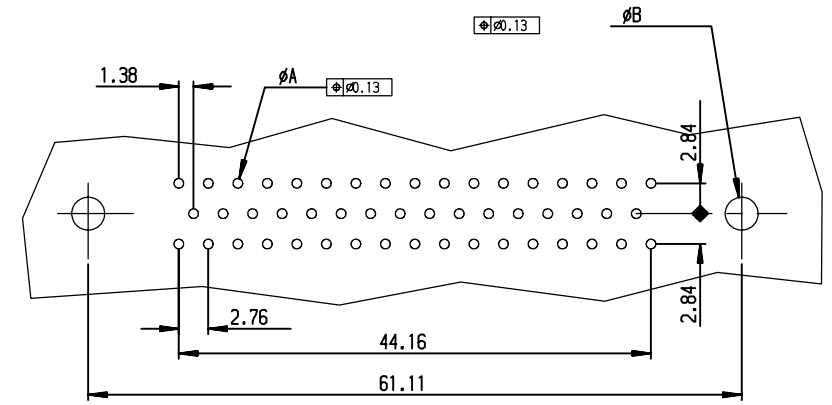
A



B



PC board drilling dimensions  
(after plating - thickness: 1.60 to 3.20 mm)



Part number SEE TABLE

**REQUIREMENTS**

Technical characteristics:

- Shell: steel tin plated
- Insulators: self-extinguishing thermoplastic, ULClass94V0
- Contacts: phosphor bronze, gold (for thickness see table)  
over 2µ mini nickel on active area and flash to 1.5µ maxi SnPb over
- 1µ mini nickel on termination
- Cycles: 200 min for plating 4  
500 min for plating 6
- Gauge retention force: 0.20 N mini

Accessories:

- Threaded insert M3 with harpoon, tin plated  
retention against torque 1.2N.m minimum

Electrical characteristics:

- max. current rating: 5A
- Test voltage: 1000V
- Rated voltage: 300V
- Contact resistance: <10mΩ
- Shell resistance: <5mΩ
- Insulation resistance: >5000MΩ

Climatic characteristics:

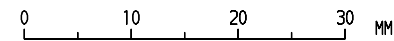
- Operating temperature range: -55°C +125°C

Dimensions:

- in accordance with MIL-C-24308B and DIN41652

PART NUMBER	
flash gold	D50591C4GL00
0.76µ gold	D50591C6GL00

PCB HOLE DEFINITION		
	ØA	ØB
DRILLED HOLE	Ø1.15±0.03	Ø3.22±0.03
COPPER PLATING	25µ mini	
TIN-LEAD PLATING	5µ mini	
FINISHED HOLE AFTER REFLOW	Ø0.94-1.09	Ø3.02-3.20



rev	ecn no	dr	date
B	-	MLE	1996/07/25
C	LS06-0140	LGO	2006/09/25
-	-	-	-
-	-	-	-
-	-	-	-
-	-	-	-

www.fciconnect.com			surface ISO 1302 ✓	tolerance std ISO 406 ISO 1101	projection mm	TOLERANCES UNLESS OTHERWISE SPECIFIED			
Dr	PESSON	1995/10/03	ANGULAR	LINEAR	0.X	±0.1	size	Scale	
Eng	PESSON	1995/10/03			0.XX	±0.1	A3	2	
Chr	LEGARE	1995/10/03	0.XX' ±2'		0.XXX	±0.1	ECN	LS06-0140	
Appr	LEGARE	1995/10/03	Product family		D-SUB		Spec ref	-	
FCI			FEMALE CONNECTOR DELTA D 50-EUROPE			title		straight press-fit	Rev.
catalog no			-			dwg no		C01-8646-0373	C
CUSTOMER			-			sheet		1 of 1	

European Views



Copyright FCI.