

TIN LEAD PART NUMBER

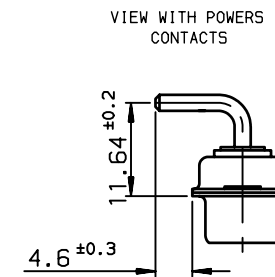
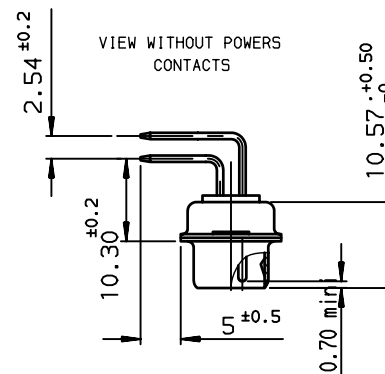
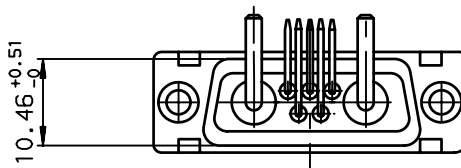
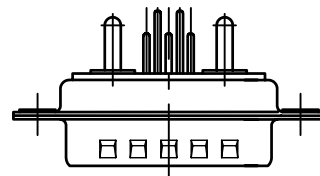
DA7W2P500A30

PART NUMBER

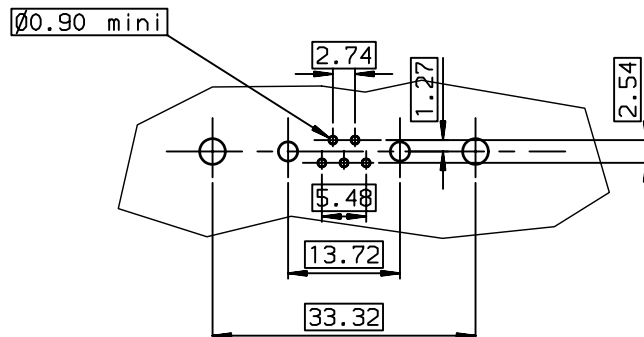
LEAD FREE PART NUMBER

DA7W2P500A30LF

PART NUMBER






LAYOUT DIMENSIONS (after plating)



GENERAL CHARACTERISTICS AND ROHS INFORMATIONS:	
SEE DRAWING C01-8639-0000	

European Views

rev	ech no	dr	date
B	-	DEB	2003/09/2
C	LS05-001	MPE	2005/03/0
D	LS06-0095	LGO	2006/06/2
-	-	-	-
-	-	-	-
-	-	-	-
-	-	-	-

www.fciconnect.com			surface ISO 1302		tolerance std ISO 406 ISO 1101		projection 		mm 								
			TOLERANCES UNLESS OTHERWISE SPECIFIED														
Dr	JARRY	2000/12/18	ANGULAR	LINEAR	0.X	±0.1	size A3	Scale 1.5									
Eng	PESSON	2000/12/18			0.XX	±0.1											
Chr	LEGARE	2000/12/18			0.XXX	±0.1											
Appr	LEGARE	2000/12/18	Product family				D-SUB	Spec ref -									
			title PIN CONNECTOR RIGHT ANGLED WITH POWERS CONTACTS .				dwg no C01-8639-1759			Rev. D							
												catalog no		CUSTOMER		sheet 1 of 1	
												-					