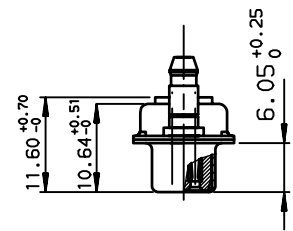
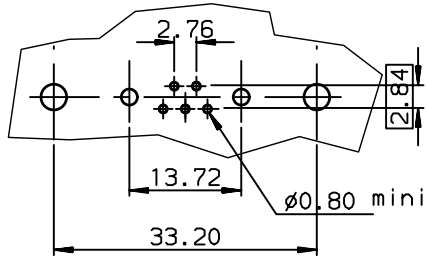


LAYOUT DIMENSIONS (after plating)
CONNECTOR SIDE VIEW



TIN LEAD PART NUMBER

DAL7W2S300G30	M3
PART NUMBER	Threaded A

LEAD FREE PART NUMBER

DAL7W2S300G30LF	M3
PART NUMBER	Threaded A

GENERAL CHARACTERISTICS AND ROHS INFORMATIONS:
SEE DRAWING C01-8639-0000

European Views

www.fciconnect.com		surface ISO 1302	tolerance std ISO 406 ISO 1101	projection mm	size A3		Scale 1.5
		TOLERANCES UNLESS OTHERWISE SPECIFIED		ANGULAR	LINEAR	0.X ±0.1	0.XX ±0.1
				0.XX ±2°	0.XXX ±0.1	ECN LS06-0095	
Dr	JARRY	1994/08/30	Product family		D-SUB	Spec ref -	
Eng	PESSON	1994/08/30	SOCKET CONNECTOR WITH		C01-8639-0557		Rev. H
Chr	LEGARE	1994/08/30	TWO POWERS CONTACTS				
Appr	LEGARE	1994/08/30	catalog no				CUSTOMER sheet 1 of 1

rev	ecn no	dr	date
F	-	BAR	2004/02/27
G	LS05-001	MPE	2005/03/07
H	LS06-0095	LGO	2006/07/19
-	-	-	-
-	-	-	-
-	-	-	-



Copyright FCI.